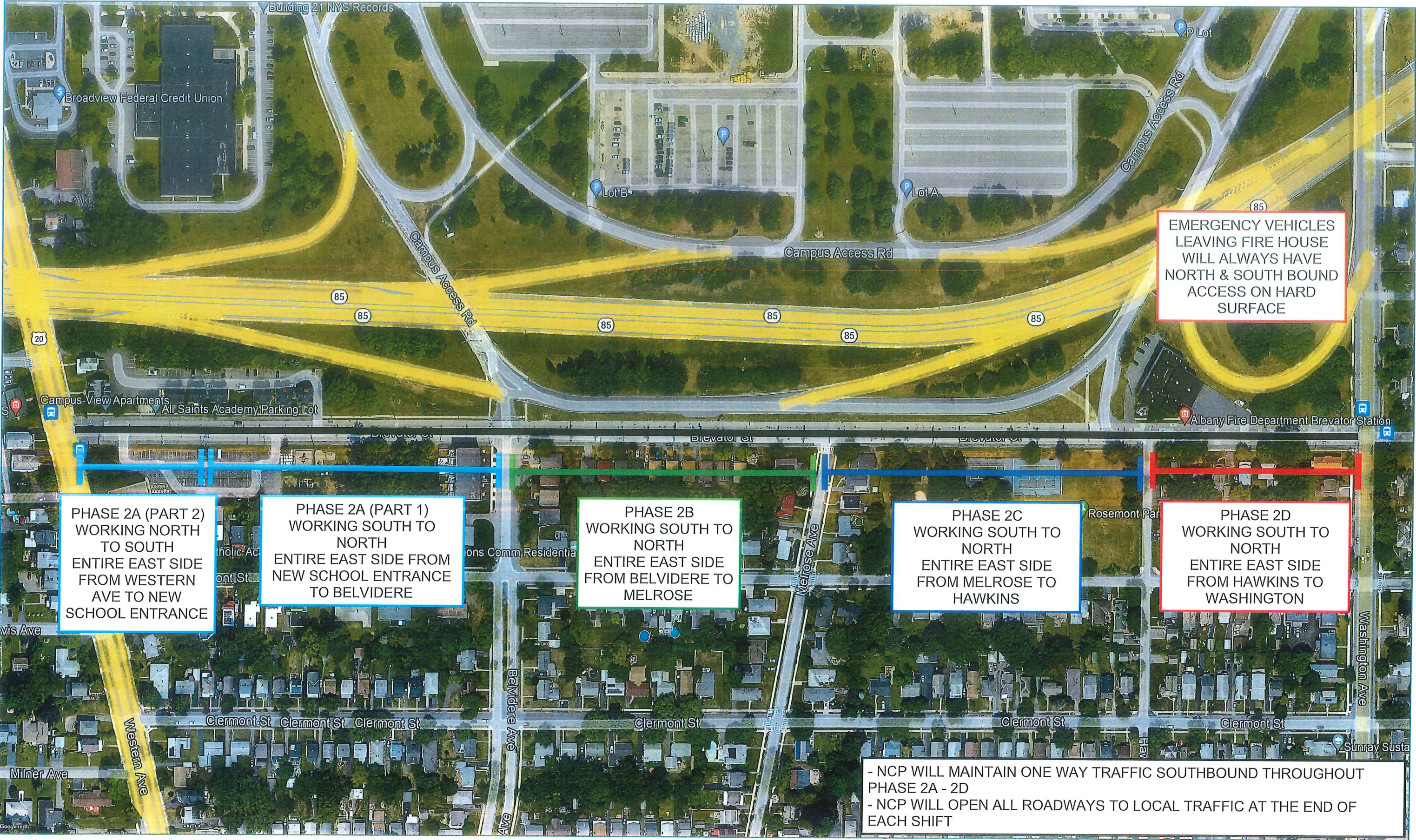
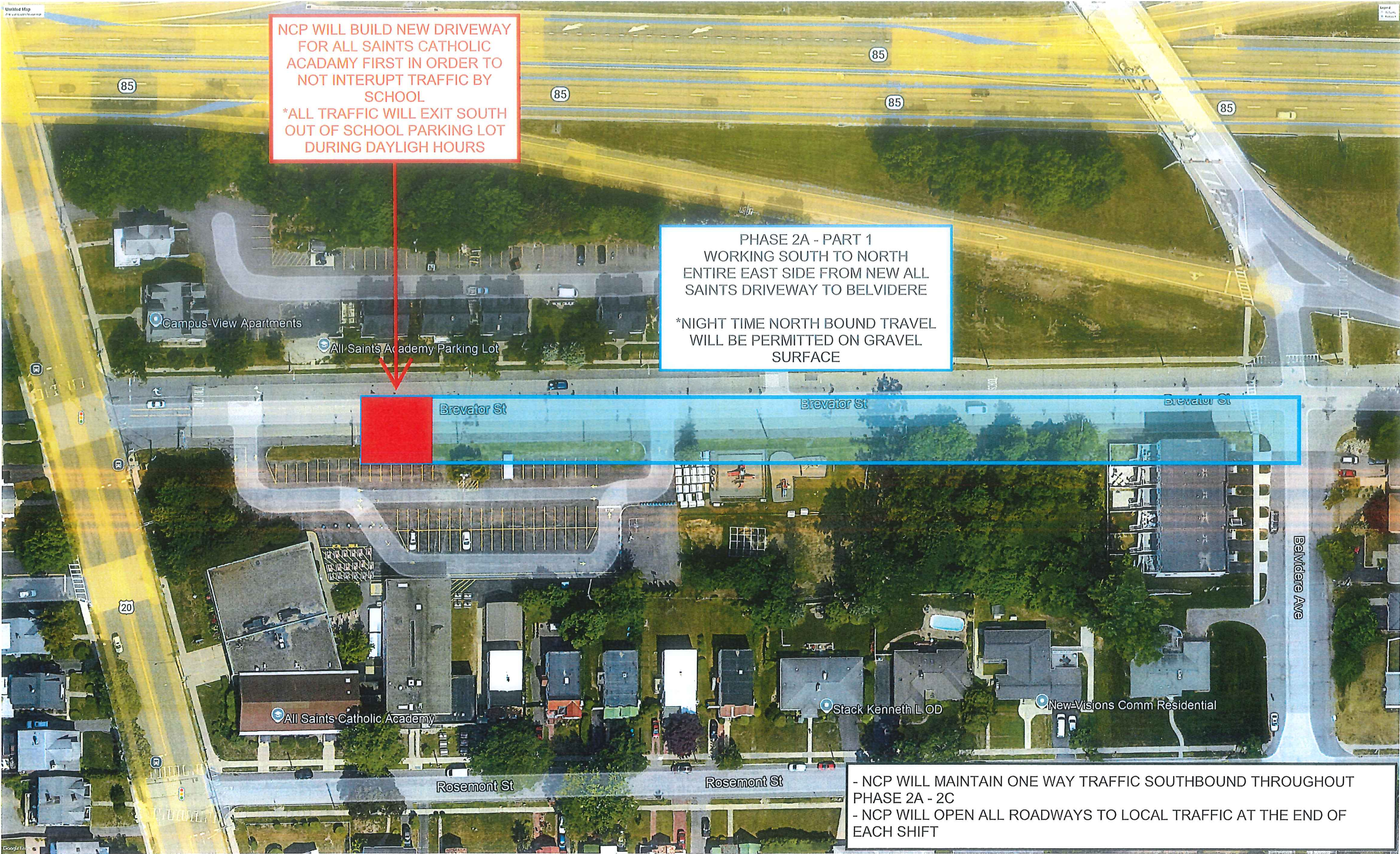


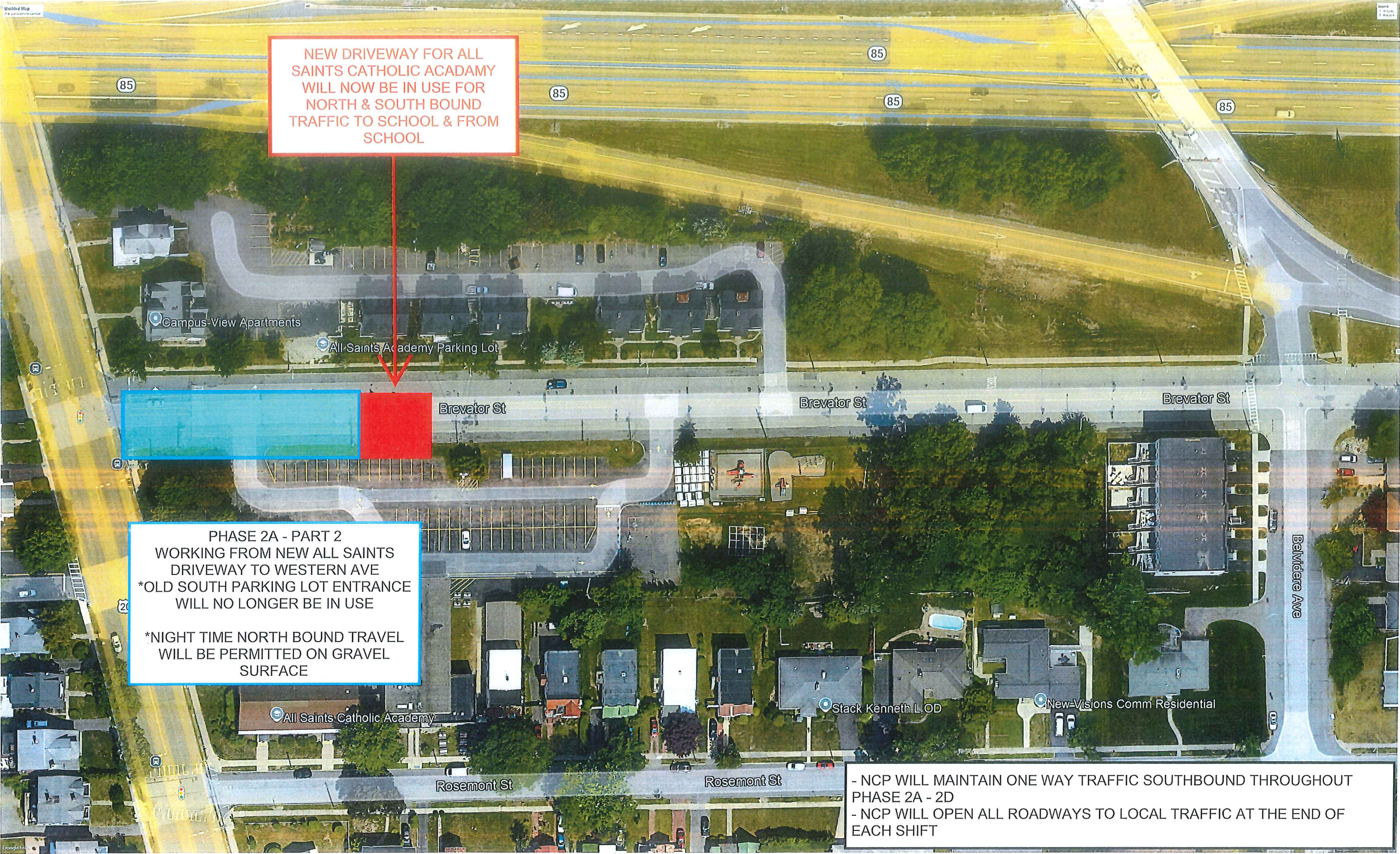
Brevator Street - Phasing Plan



# Brevator Street - Phase 2A - Part 1



Brevator Street - Phase 2A - Part 2



# Brevator Street - Phase 2B



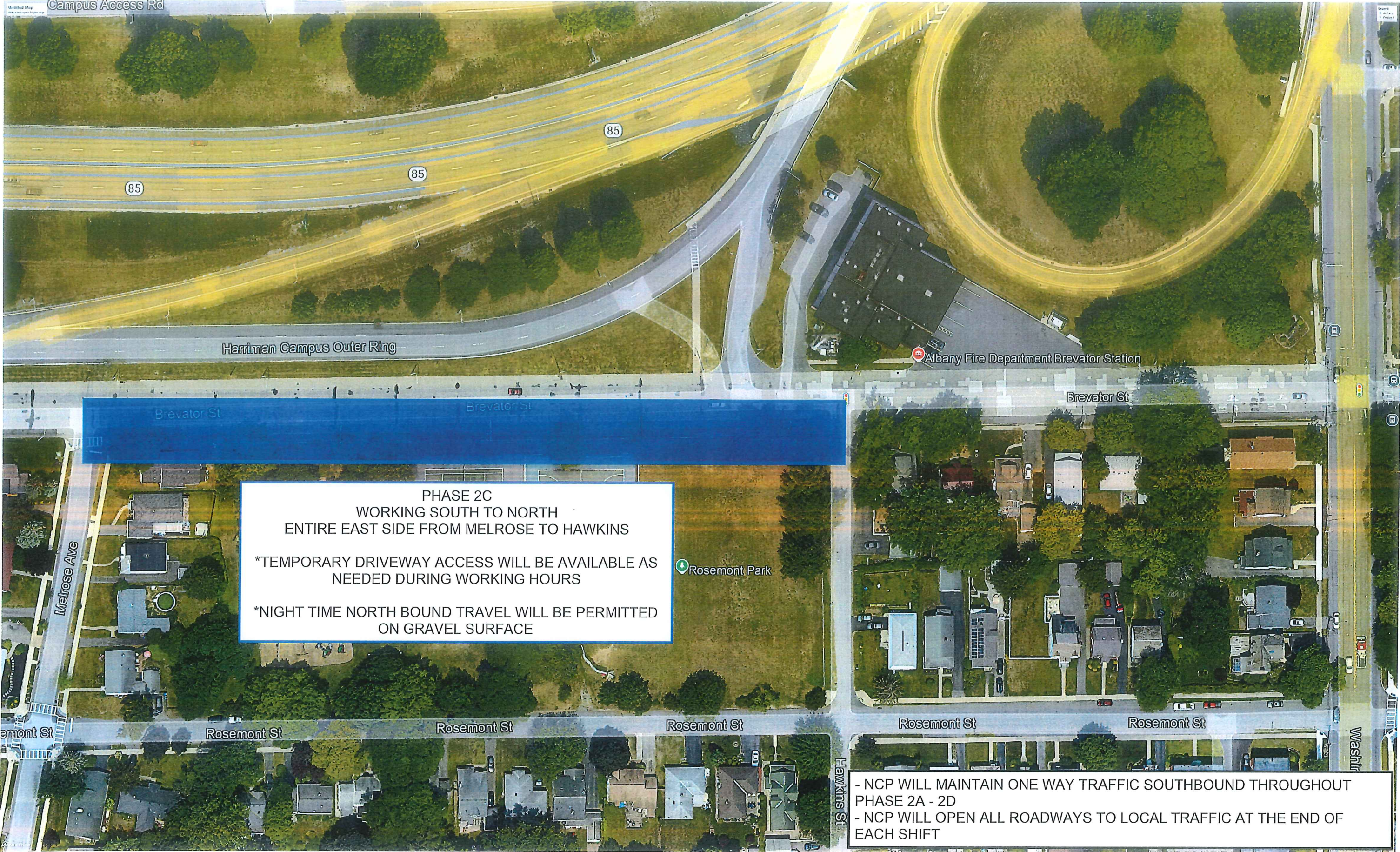
PHASE 2B  
WORKING SOUTH TO NORTH  
ENTIRE EAST SIDE FROM  
BELVIDERE TO MELROSE

\*TEMPORARY DRIVEWAY ACCESS  
WILL BE AVAILABLE AS NEEDED  
DURING WORKING HOURS

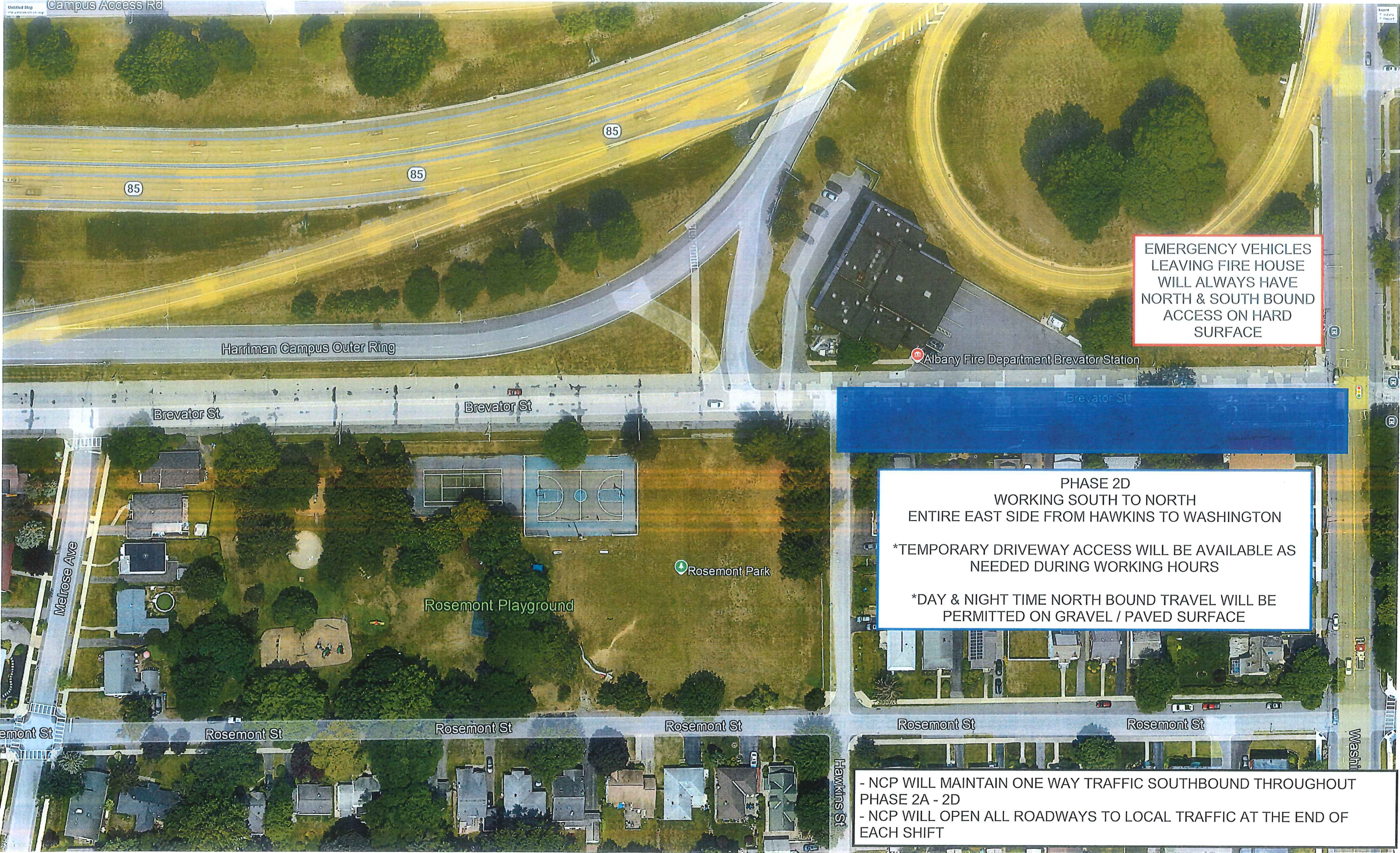
\*NIGHT TIME NORTH BOUND  
TRAVEL WILL BE PERMITTED ON  
GRAVEL SURFACE

- NCP WILL MAINTAIN ONE WAY TRAFFIC SOUTHBOUND THROUGHOUT  
PHASE 2A - 2D  
- NCP WILL OPEN ALL ROADWAYS TO LOCAL TRAFFIC AT THE END OF  
EACH SHIFT

# Brevator Street - Phase 2C



# Brevator Street - Phase 2D



EMERGENCY VEHICLES  
LEAVING FIRE HOUSE  
WILL ALWAYS HAVE  
NORTH & SOUTH BOUND  
ACCESS ON HARD  
SURFACE

PHASE 2D  
WORKING SOUTH TO NORTH  
ENTIRE EAST SIDE FROM HAWKINS TO WASHINGTON

\*TEMPORARY DRIVEWAY ACCESS WILL BE AVAILABLE AS  
NEEDED DURING WORKING HOURS

\*DAY & NIGHT TIME NORTH BOUND TRAVEL WILL BE  
PERMITTED ON GRAVEL / PAVED SURFACE

- NCP WILL MAINTAIN ONE WAY TRAFFIC SOUTHBOUND THROUGHOUT  
PHASE 2A - 2D
- NCP WILL OPEN ALL ROADWAYS TO LOCAL TRAFFIC AT THE END OF  
EACH SHIFT