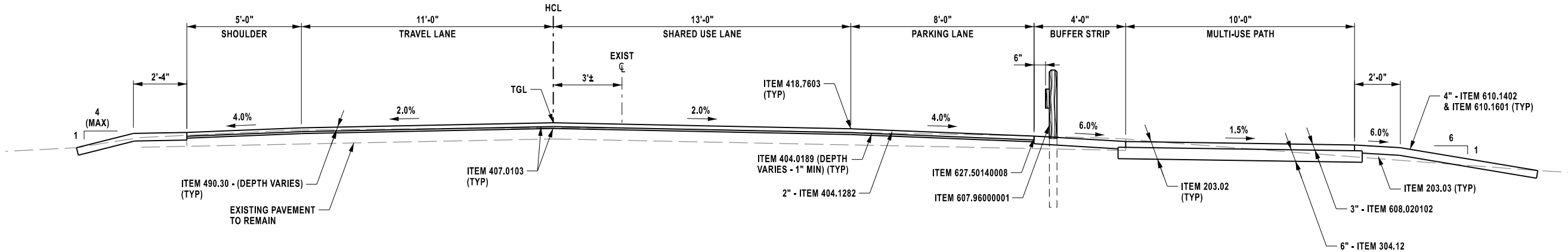
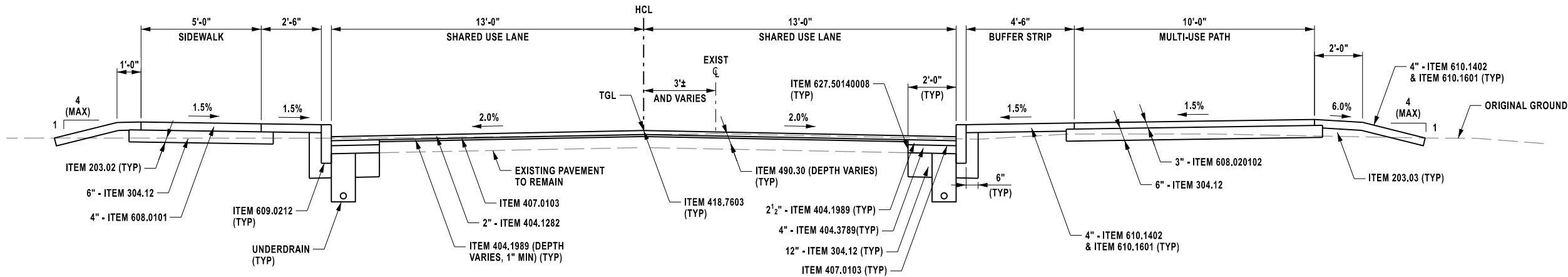


PROJECT LOCATION
FRISBIE AVENUE

FILE NAME = V:\Projects\ANY\K\7\086727.000\09_Design\Drawings\Hwy\Frisbie Avenue\086727_cph_typ_01_fa.dgn
DATE/TIME = 20-DEC-2024
USER = 4066



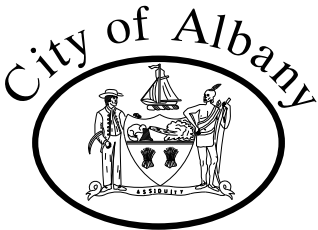
FRISBIE AVENUE RESURFACING
TYPICAL SECTION
NTS
STA 10+14.77 TO STA 19+61.00



FRISBIE AVENUE RESURFACING
TYPICAL SECTION
NTS
STA 19+61.00 TO STA 24+20.07

ITEM NO.	DESCRIPTION	UNIT	NOTES
203.02	UNCLASSIFIED EXCAVATION AND DISPOSAL	CY	
203.03	EMBANKMENT IN PLACE	CY	
304.12	SUBBASE COURSE, TYPE 2	CY	
404.0189	TRUING & LEVELING F9, ASPHALT, 80 SERIES COMPACTION	TON	
404.1282	12.5 F2 TOP COURSE ASPHALT, 80 SERIES COMPACTION	TON	
404.1989	19 F9 BINDER COURSE ASPHALT, 80 SERIES COMPACTION	TON	
404.3789	37.5 F9 BASE COURSE ASPHALT, 80 SERIES COMPACTION	TON	
407.0103	STRAIGHT TACK COAT	GAL	
418.7603	ASPHALT PAVEMENT JOINT ADHESIVE	LF	
490.30	MISCELLANEOUS COLD MILLING OF BITUMINOUS CONCRETE	SY	
607.9600	WOODEN PEDESTRIAN RAILING	LF	
608.0101	CONCRETE SIDEWALKS AND DRIVEWAYS	CY	
608.020102	ASPHALT SIDEWALKS, DRIVEWAYS, BICYCLE PATHS, AND VEGETATION CONTROL STRIPS	TON	
609.0212	STONE CURB NEAR VERTICAL FACE (NVF)	LF	
610.1402	TOPSOIL - ROADSIDE	CY	
610.1601	TURF ESTABLISHMENT - ROADSIDE	SY	

NOT FOR
CONSTRUCTION



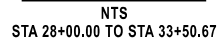
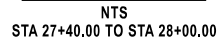
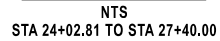
IT IS A VIOLATION OF LAW FOR ANY PERSON, UNLESS THEY ARE ACTING UNDER THE DIRECTION OF A LICENSED PROFESSIONAL ENGINEER, ARCHITECT, LANDSCAPE ARCHITECT OR LAND SURVEYOR TO ALTER AN ITEM IN ANY WAY. IF AN ITEM BEARING THE STAMP OF A LICENSED PROFESSIONAL IS ALTERED, THE ALTERING ENGINEER, ARCHITECT, LANDSCAPE ARCHITECT OR LAND SURVEYOR SHALL STAMP THE DOCUMENT AND INCLUDE THE NOTATION "ALTERED BY" FOLLOWED BY THEIR SIGNATURE, THE DATE OF SUCH ALTERATION, AND A SPECIFIC DESCRIPTION OF THE ALTERATION.

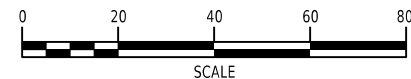
No.	Submittal / Revision	Appd.	Date

PIN 1762.31
FRISBIE AVENUE
REHABILITATION AND
BICYCLE/PEDESTRIAN
INFRASTRUCTURE PROJECT
CITY OF ALBANY,
ALBANY COUNTY, NEW YORK

TYPICAL SECTIONS

Designed By: J. SCUDDER	Project No.: 086727	Drawing No.: TS-1
Drawn By: A. DAMES	Scale: NTS	
Checked By: J. SHIELDS	Plot Date: 20-DEC-2024	SHEET 1

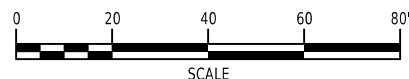




[illegible]

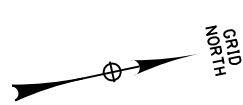
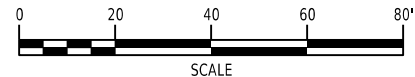
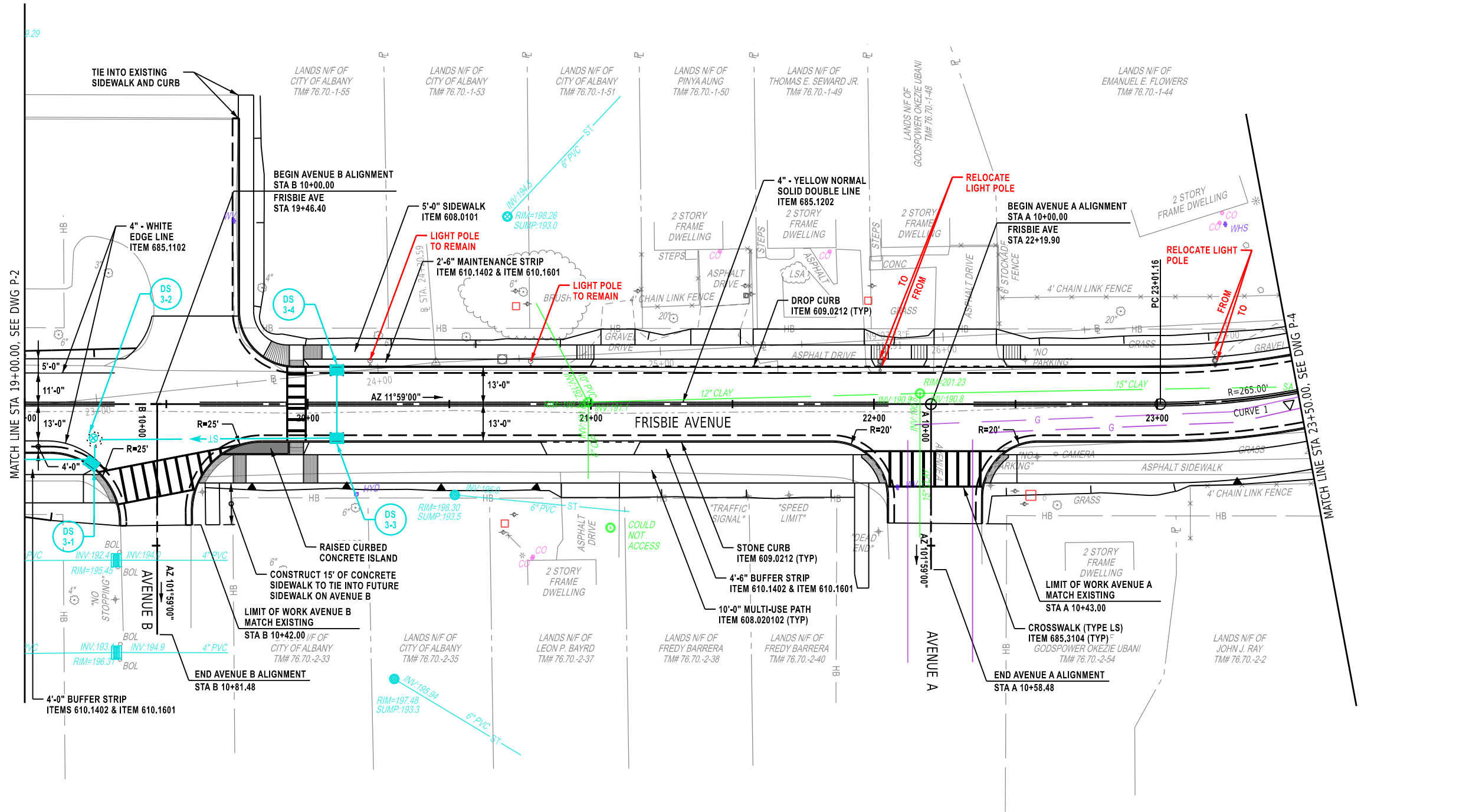
GENERAL PLAN

Drawing No.:
P-2
SHEET 4

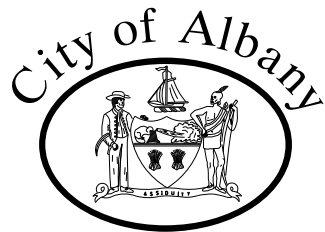


FILE NAME = V:\Projects\ANY\K7086727_000\09_Design\Drawings\Hwy\Frisbie Avenue\086727_cph_gnp_03_fa.dgn
DATE/TIME = 20-DEC-2024
USER = 4066

CURVE 1	
PC =	STA 23+01.16
PT =	STA 23+91.27
R =	265.00'
L =	90.113'
T =	45.50'
Δ =	19°-29'-00"
emax =	N.C.



NOT FOR
CONSTRUCTION



IT IS A VIOLATION OF LAW FOR ANY PERSON, UNLESS THEY ARE ACTING UNDER THE DIRECTION OF A LICENSED PROFESSIONAL ENGINEER, ARCHITECT, LANDSCAPE ARCHITECT OR LAND SURVEYOR TO ALTER AN ITEM IN ANY WAY. IF AN ITEM BEARING THE STAMP OF A LICENSED PROFESSIONAL IS ALTERED, THE ALTERING ENGINEER, ARCHITECT, LANDSCAPE ARCHITECT OR LAND SURVEYOR SHALL STAMP THE DOCUMENT AND INCLUDE THE NOTATION "ALTERED BY" FOLLOWED BY THEIR SIGNATURE, THE DATE OF SUCH ALTERATION, AND A SPECIFIC DESCRIPTION OF THE ALTERATION.

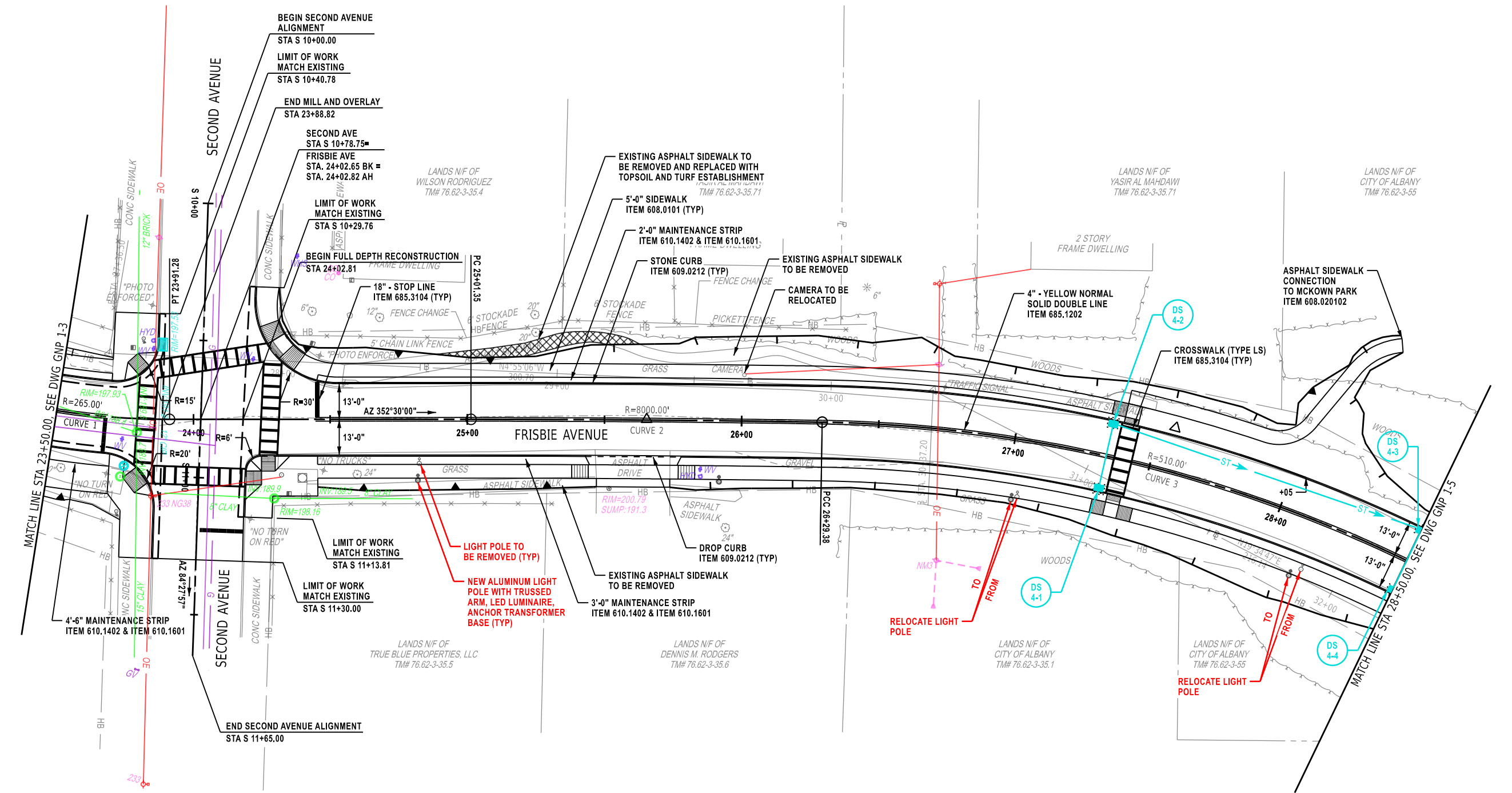
No.	Submittal / Revision	Appd.	Date

PIN 1762.31
**FRISBIE AVENUE
REHABILITATION AND
BICYCLE/PEDESTRIAN
INFRASTRUCTURE PROJECT**
CITY OF ALBANY,
ALBANY COUNTY, NEW YORK

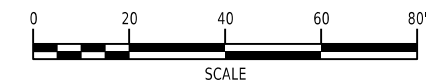
GENERAL PLAN

Designed By: J. SCUDDER	Project No.: 086727	Drawing No.: P-3
Drawn By: A. DAMES	Scale: AS SHOWN	SHEET 5
Checked By: J. SHIELDS	Plot Date: 20-DEC-2024	

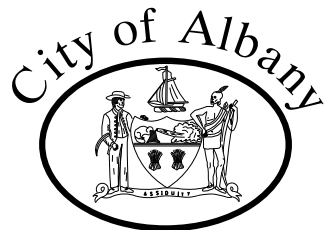
FILE NAME = V:\Projects\ANY\K\086727_000\09_Design\Drawings\Hwy\Frisbie Avenue\086727_cph_gnp_04_fa.dgn
DATE/TIME = 20-DEC-2024
USER = 4066



CURVE 1	CURVE 2	CURVE 3
PC = STA 23+01.16	PC = STA 25+01.35	PCC = STA 26+29.38
PT = STA 23+91.27	PCC = STA 26+29.38	PT = STA 28+81.77
R = 265.00'	R = 8000.00'	R = 510.00'
L = 90.113'	L = 128.03'	L = 252.39'
T = 45.50'	T = 64.02'	T = 128.84'
Δ = 19°-29'-00"	Δ = 0°-5'-30.12"	Δ = 28°-21'-18"
emax = N.C.	emax = N.C.	emax = N.C.



NOT FOR
CONSTRUCTION



IT IS A VIOLATION OF LAW FOR ANY PERSON, UNLESS THEY ARE ACTING UNDER THE DIRECTION OF A LICENSED PROFESSIONAL ENGINEER, ARCHITECT, LANDSCAPE ARCHITECT OR LAND SURVEYOR TO ALTER AN ITEM IN ANY WAY. IF AN ITEM BEARING THE STAMP OF A LICENSED PROFESSIONAL IS ALTERED, THE ALTERING ENGINEER, ARCHITECT, LANDSCAPE ARCHITECT OR LAND SURVEYOR SHALL STAMP THE DOCUMENT AND INCLUDE THE NOTATION "ALTERED BY" FOLLOWED BY THEIR SIGNATURE, THE DATE OF SUCH ALTERATION, AND A SPECIFIC DESCRIPTION OF THE ALTERATION.

No.	Submittal / Revision	Appd.	Date

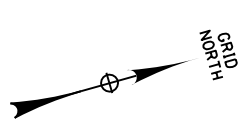
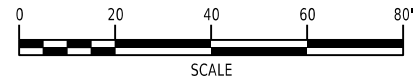
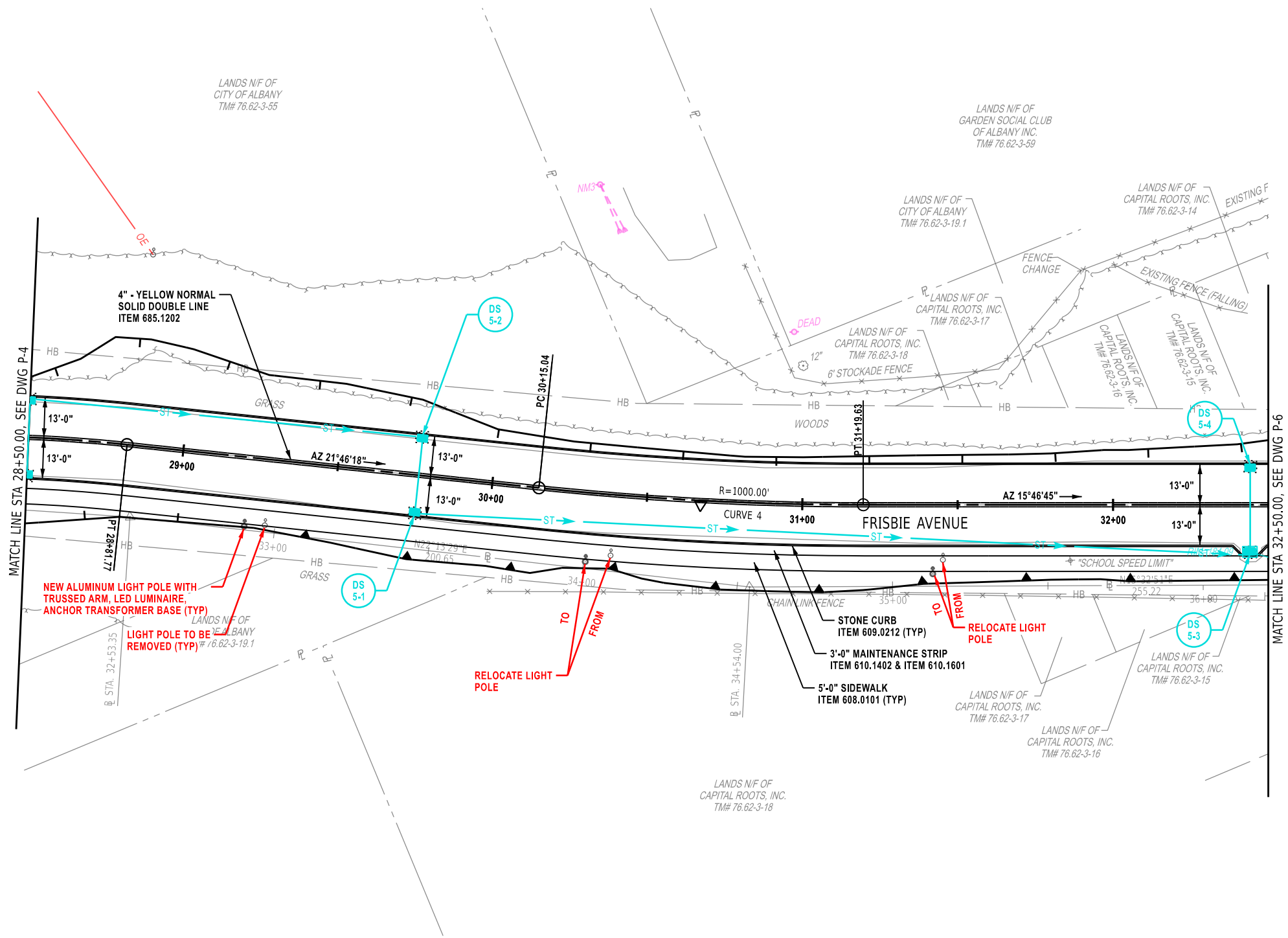
PIN 1762.31
**FRISBIE AVENUE
REHABILITATION AND
BICYCLE/PEDESTRIAN
INFRASTRUCTURE PROJECT**
CITY OF ALBANY,
ALBANY COUNTY, NEW YORK

GENERAL PLAN

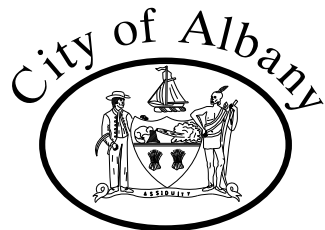
Designed By: J. SCUDDER	Project No.: 086727	Drawing No.: P-4
Drawn By: A. DAMES	Scale: AS SHOWN	SHEET 6
Checked By: J. SHIELDS	Plot Date: 20-DEC-2024	

FILE NAME = V:\Projects\ANY\K7\086727.000\09_Design\Drawings\Hwy\Frisbie Avenue\086727_cph_gnp_05_fa.dgn
DATE/TIME = 20-DEC-2024
USER = 4066

CURVE 3		CURVE 4	
PCC =	STA 26+29.38	PC =	STA 30+15.04
PT =	STA 28+81.77	PT =	STA 31+19.63
R =	510.00'	R =	1000.00'
L =	252.39'	L =	104.59'
T =	128.84'	T =	52.34'
Δ =	28°-21'-18"	Δ =	5°-59'-35"
emax =	N.C.	emax =	N.C.



NOT FOR
CONSTRUCTION



IT IS A VIOLATION OF LAW FOR ANY PERSON, UNLESS THEY ARE ACTING UNDER THE DIRECTION OF A LICENSED PROFESSIONAL ENGINEER, ARCHITECT, LANDSCAPE ARCHITECT OR LAND SURVEYOR TO ALTER AN ITEM IN ANY WAY. IF AN ITEM BEARING THE STAMP OF A LICENSED PROFESSIONAL IS ALTERED, THE ALTERING ENGINEER, ARCHITECT, LANDSCAPE ARCHITECT OR LAND SURVEYOR SHALL STAMP THE DOCUMENT AND INCLUDE THE NOTATION "ALTERED BY" FOLLOWED BY THEIR SIGNATURE, THE DATE OF SUCH ALTERATION, AND A SPECIFIC DESCRIPTION OF THE ALTERATION.

No.	Submittal / Revision	Appd.	Date

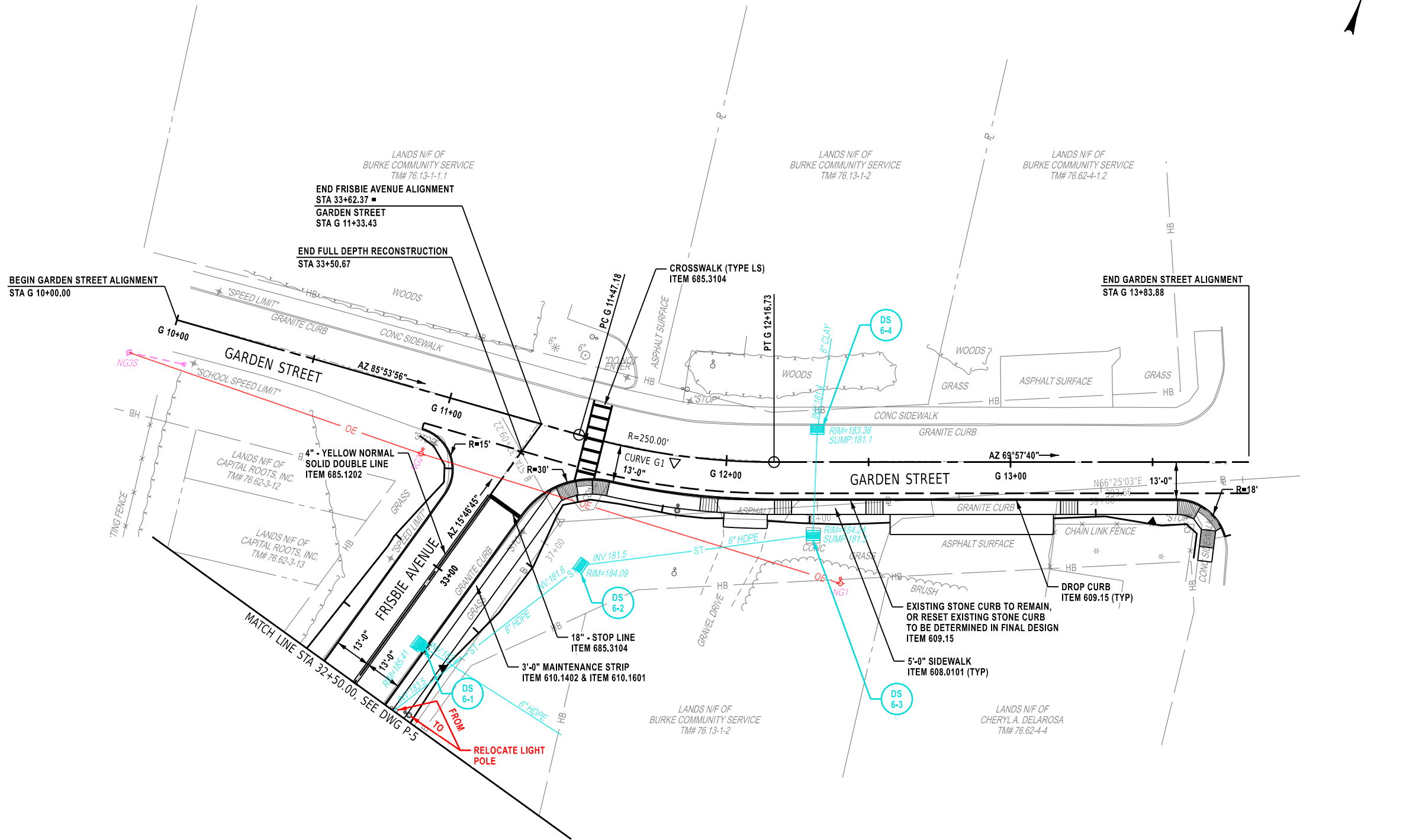
PIN 1762.31
**FRISBIE AVENUE
REHABILITATION AND
BICYCLE/PEDESTRIAN
INFRASTRUCTURE PROJECT**
CITY OF ALBANY,
ALBANY COUNTY, NEW YORK

GENERAL PLAN

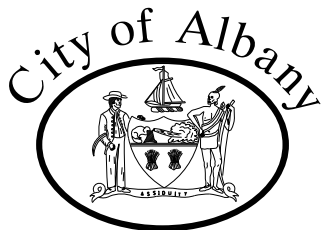
Designed By: J. SCUDDER	Project No.: 086727	Drawing No.: P-5 SHEET 7
Drawn By: A. DAMES	Scale: AS SHOWN	
Checked By: J. SHIELDS	Plot Date: 20-DEC-2024	

FILE NAME = V:\Projects\ANY\K7\086727_000\09_Design\Drawings\Hwy\Frisbie Avenue\086727_cph_gmp_06_fa.dgn
DATE/TIME = 20-DEC-2024
USER = 4066

CURVE G1	
PC =	STA G 11+47.19
PT =	STA G 12+16.73
R =	250.00'
L =	69.54'
T =	35.00'
Δ =	15°-56'-16.80"
emax =	EXISTING



NOT FOR
CONSTRUCTION



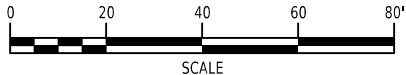
IT IS A VIOLATION OF LAW FOR ANY PERSON, UNLESS THEY ARE ACTING UNDER THE DIRECTION OF A LICENSED PROFESSIONAL ENGINEER, ARCHITECT, LANDSCAPE ARCHITECT OR LAND SURVEYOR TO ALTER AN ITEM IN ANY WAY. IF AN ITEM BEARING THE STAMP OF A LICENSED PROFESSIONAL IS ALTERED, THE ALTERING ENGINEER, ARCHITECT, LANDSCAPE ARCHITECT OR LAND SURVEYOR SHALL STAMP THE DOCUMENT AND INCLUDE THE NOTATION "ALTERED BY" FOLLOWED BY THEIR SIGNATURE, THE DATE OF SUCH ALTERATION, AND A SPECIFIC DESCRIPTION OF THE ALTERATION.

No.	Submittal / Revision	Appd.	Date

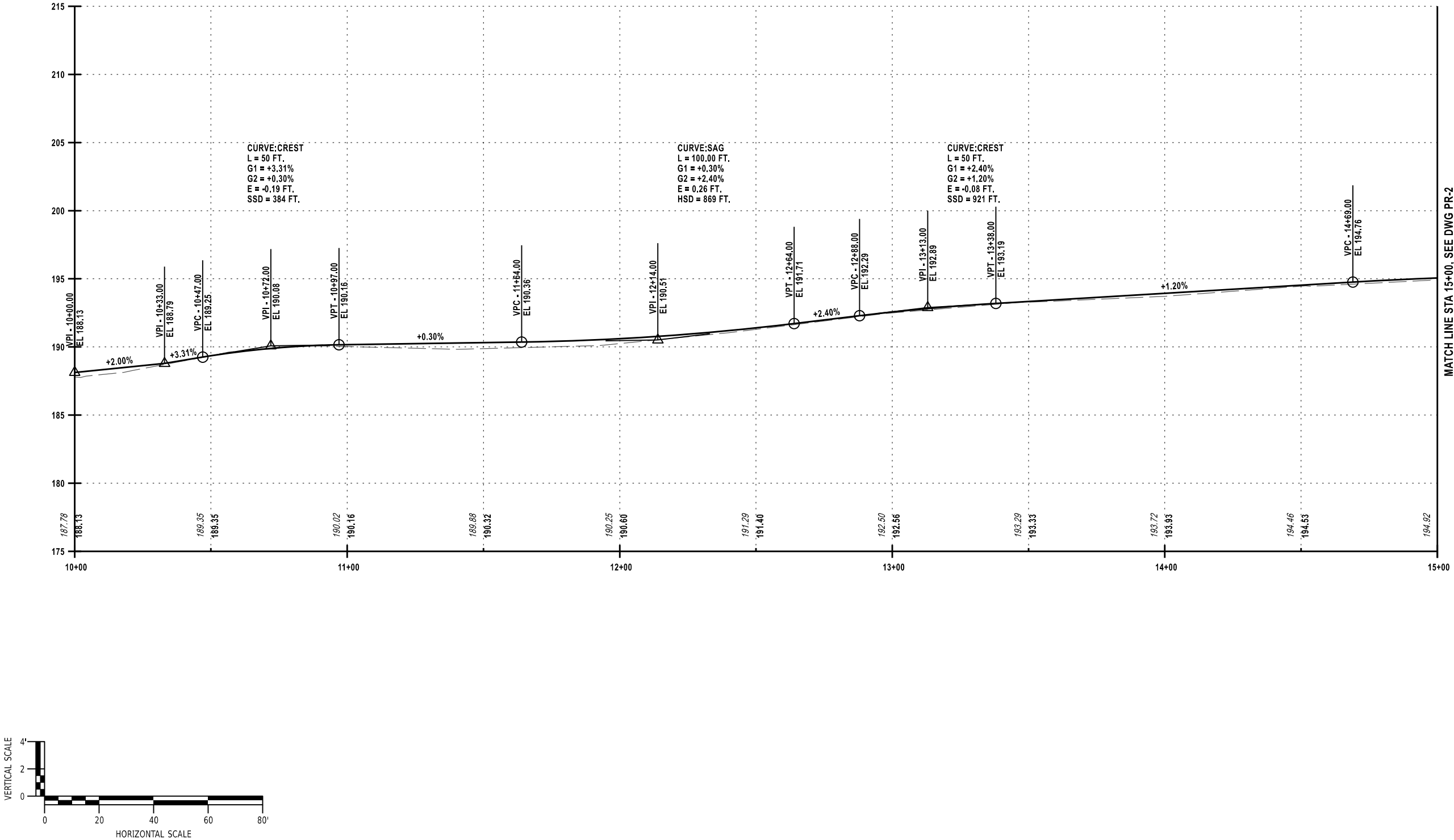
PIN 1762.31
**FRISBIE AVENUE
REHABILITATION AND
BICYCLE/PEDESTRIAN
INFRASTRUCTURE PROJECT**
CITY OF ALBANY,
ALBANY COUNTY, NEW YORK

GENERAL PLAN

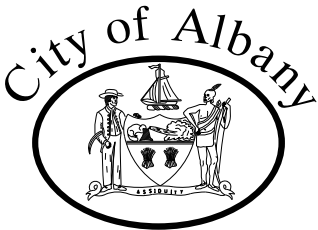
Designed By: J. SCUDDER	Project No.: 086727	Drawing No.: P-6 SHEET 8
Drawn By: A. DAMES	Scale: AS SHOWN	
Checked By: J. SHIELDS	Plot Date: 20-DEC-2024	



FILE NAME = V:\Projects\ANY\K7\086727_000\09_Design\Drawings\Hwy\Frisbie Avenue\086727_cph_pro_01_fa.dgn
DATE/TIME = 20-DEC-2024
USER = 4066



NOT FOR
CONSTRUCTION



IT IS A VIOLATION OF LAW FOR ANY PERSON, UNLESS THEY ARE ACTING UNDER THE DIRECTION OF A LICENSED PROFESSIONAL ENGINEER, ARCHITECT, LANDSCAPE ARCHITECT OR LAND SURVEYOR TO ALTER AN ITEM IN ANY WAY. IF AN ITEM BEARING THE STAMP OF A LICENSED PROFESSIONAL IS ALTERED, THE ALTERING ENGINEER, ARCHITECT, LANDSCAPE ARCHITECT OR LAND SURVEYOR SHALL STAMP THE DOCUMENT AND INCLUDE THE NOTATION "ALTERED BY" FOLLOWED BY THEIR SIGNATURE, THE DATE OF SUCH ALTERATION, AND A SPECIFIC DESCRIPTION OF THE ALTERATION.

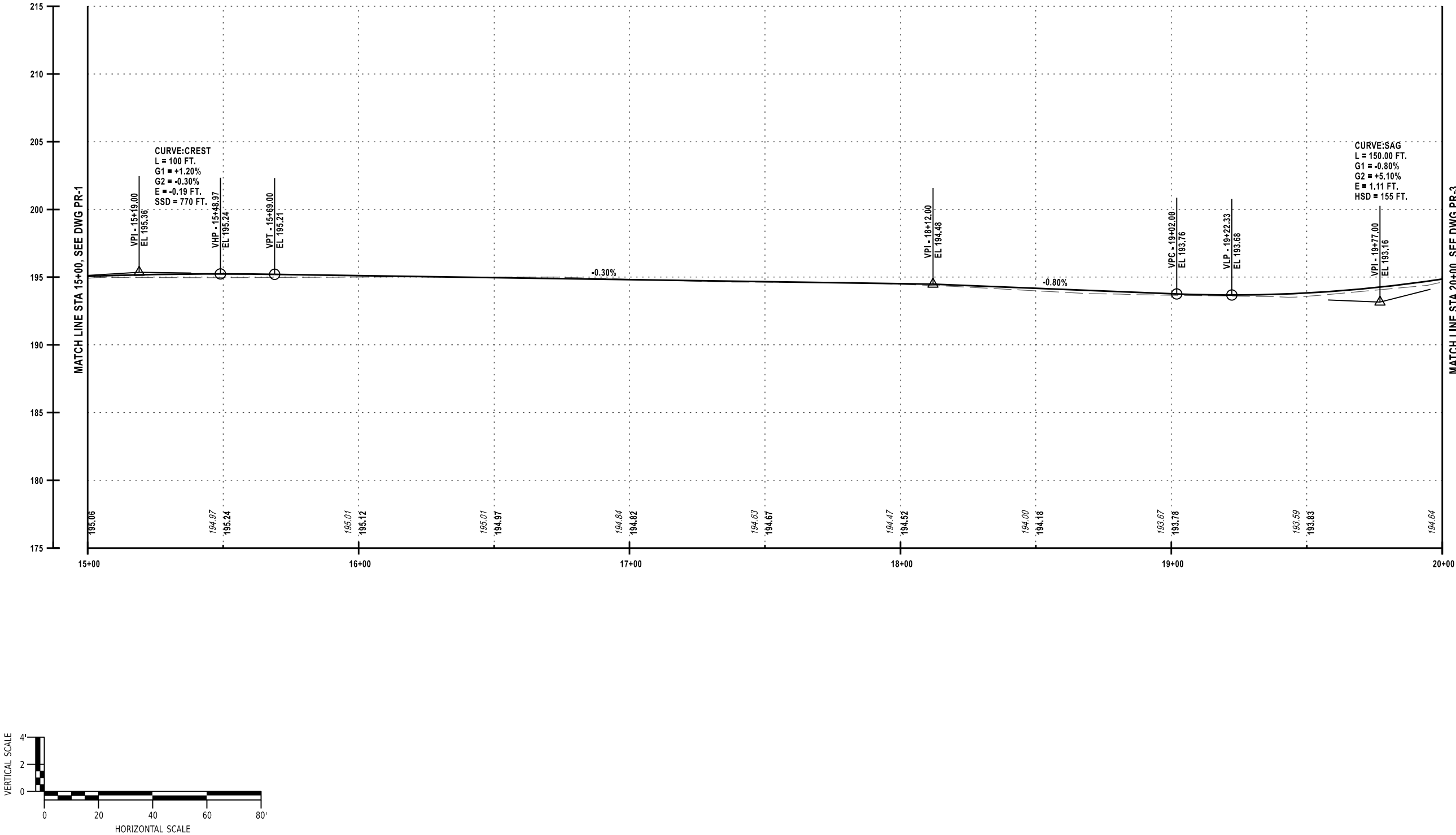
No.	Submittal / Revision	Appd.	Date

PIN 1762.31
FRISBIE AVENUE
REHABILITATION AND
BICYCLE/PEDESTRIAN
INFRASTRUCTURE PROJECT
CITY OF ALBANY,
ALBANY COUNTY, NEW YORK

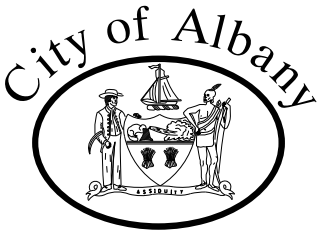
FRISBIE AVENUE
PROFILE

Designed By: J. SCUDDER	Project No.: 086727	Drawing No.: PR-1
Drawn By: A. DAMES	Scale: AS SHOWN	
Checked By: J. SHIELDS	Plot Date: 20-DEC-2024	
SHEET 9		

FILE NAME = V:\Projects\ANY\K7\086727_000\09_Design\Drawings\Hwy\Frisbie Avenue\086727_cph_pro_02_fa.dgn
DATE/TIME = 20-DEC-2024
USER = 4066



NOT FOR
CONSTRUCTION



IT IS A VIOLATION OF LAW FOR ANY PERSON, UNLESS THEY ARE ACTING UNDER THE DIRECTION OF A LICENSED PROFESSIONAL ENGINEER, ARCHITECT, LANDSCAPE ARCHITECT OR LAND SURVEYOR TO ALTER AN ITEM IN ANY WAY. IF AN ITEM BEARING THE STAMP OF A LICENSED PROFESSIONAL IS ALTERED, THE ALTERING ENGINEER, ARCHITECT, LANDSCAPE ARCHITECT OR LAND SURVEYOR SHALL STAMP THE DOCUMENT AND INCLUDE THE NOTATION "ALTERED BY" FOLLOWED BY THEIR SIGNATURE, THE DATE OF SUCH ALTERATION, AND A SPECIFIC DESCRIPTION OF THE ALTERATION.

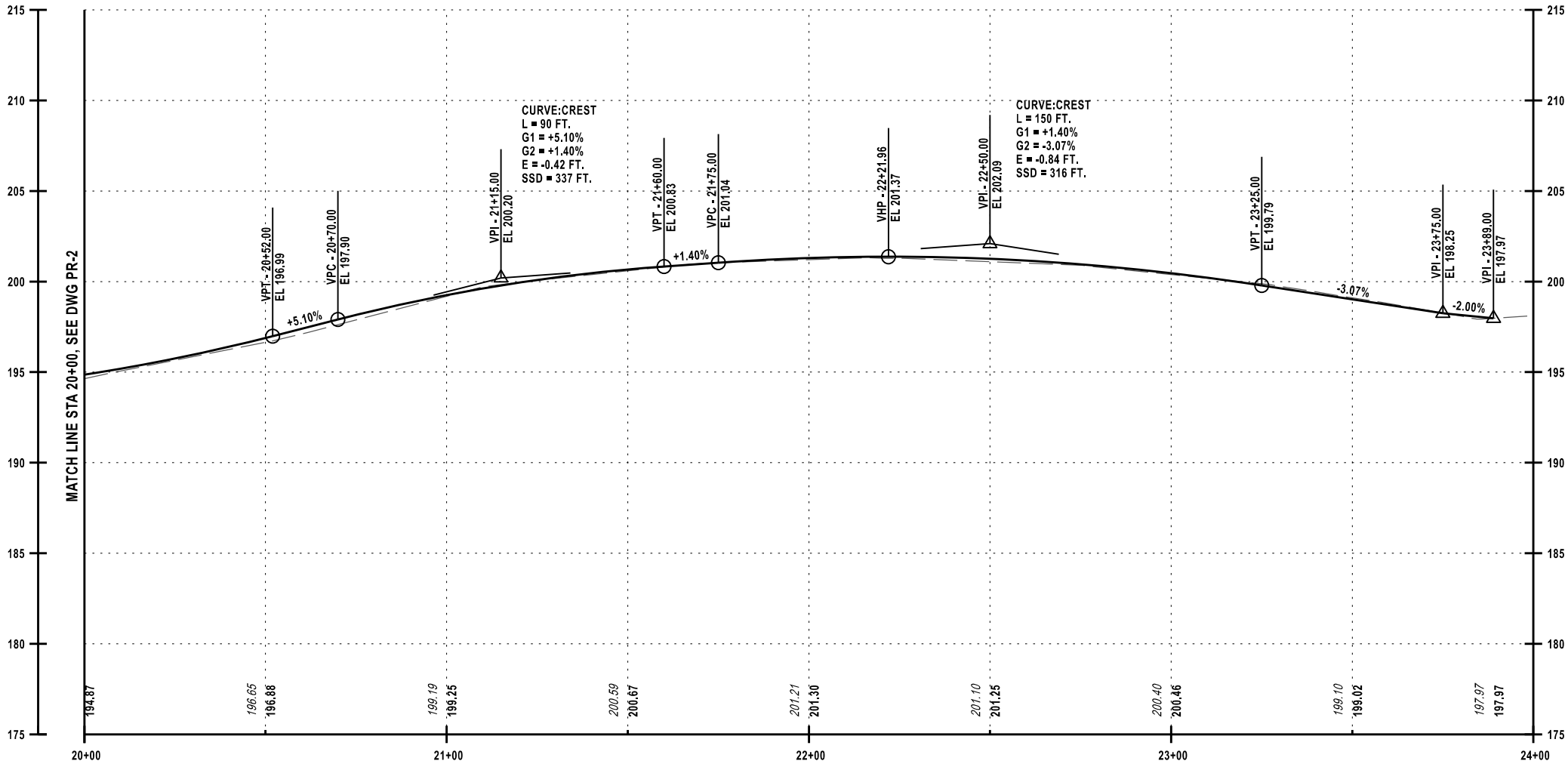
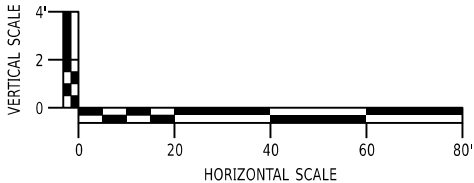
No.	Submittal / Revision	Appd.	Date

PIN 1762.31
FRISBIE AVENUE
REHABILITATION AND
BICYCLE/PEDESTRIAN
INFRASTRUCTURE PROJECT
CITY OF ALBANY,
ALBANY COUNTY, NEW YORK

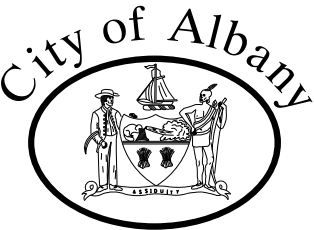
FRISBIE AVENUE
PROFILE

Designed By: J. SCUDDER	Project No.: 086727	Drawing No.: PR-2
Drawn By: A. DAMES	Scale: AS SHOWN	
Checked By: J. SHIELDS	Plot Date: 20-DEC-2024	
SHEET 11		

FILE NAME = V:\Projects\ANY\K7\086727_000\09_Design\Drawings\Hwy\Frisbie Avenue\086727_cph_pro_03_fa.dgn
DATE/TIME = 20-DEC-2024
USER = 4066



NOT FOR
CONSTRUCTION



IT IS A VIOLATION OF LAW FOR ANY PERSON, UNLESS THEY ARE ACTING UNDER THE DIRECTION OF A LICENSED PROFESSIONAL ENGINEER, ARCHITECT, LANDSCAPE ARCHITECT OR LAND SURVEYOR TO ALTER AN ITEM IN ANY WAY. IF AN ITEM BEARING THE STAMP OF A LICENSED PROFESSIONAL IS ALTERED, THE ALTERING ENGINEER, ARCHITECT, LANDSCAPE ARCHITECT OR LAND SURVEYOR SHALL STAMP THE DOCUMENT AND INCLUDE THE NOTATION "ALTERED BY" FOLLOWED BY THEIR SIGNATURE, THE DATE OF SUCH ALTERATION, AND A SPECIFIC DESCRIPTION OF THE ALTERATION.

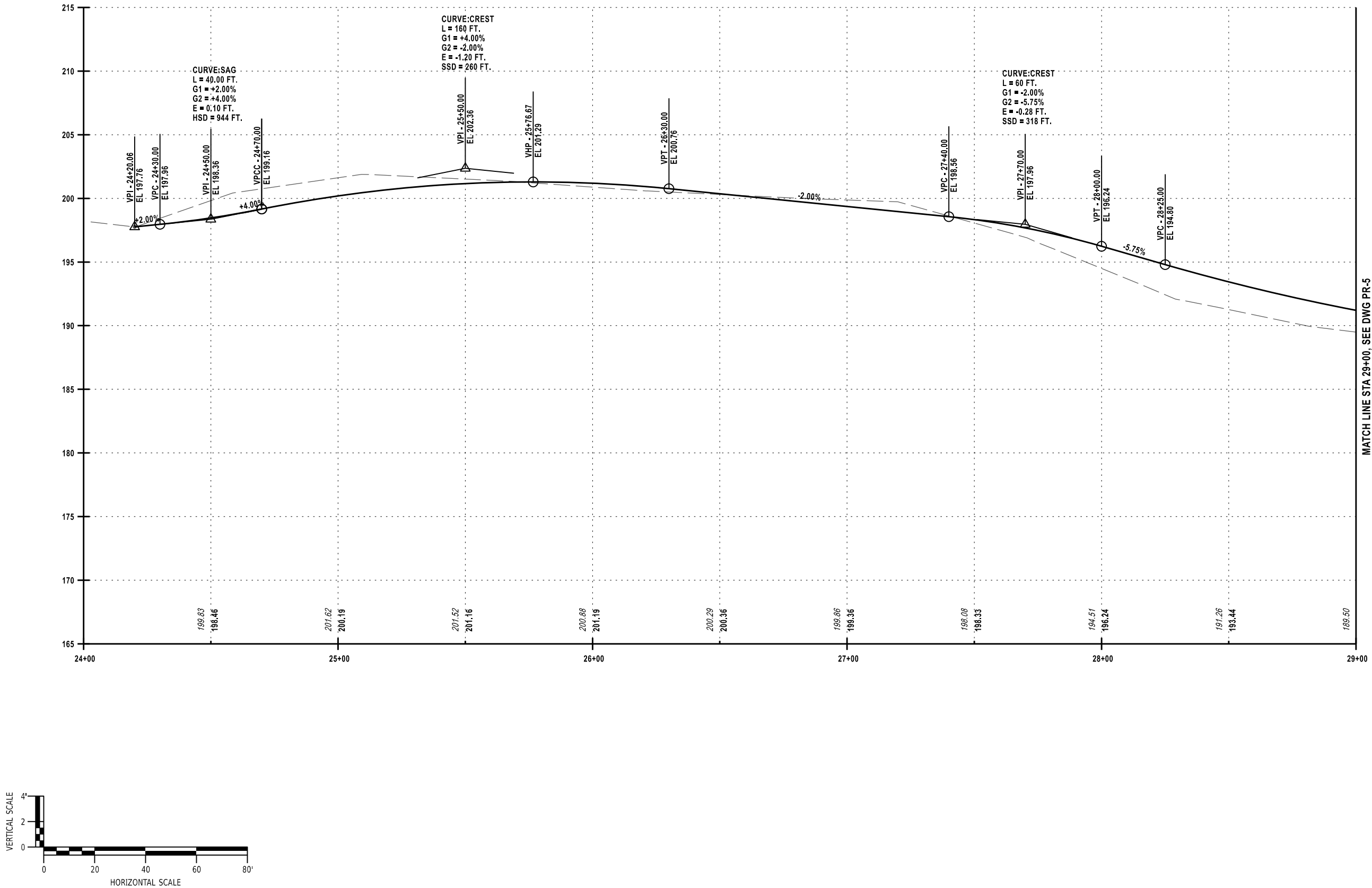
No.	Submittal / Revision	Appd.	Date

PIN 1762.31
FRISBIE AVENUE
REHABILITATION AND
BICYCLE/PEDESTRIAN
INFRASTRUCTURE PROJECT
CITY OF ALBANY,
ALBANY COUNTY, NEW YORK

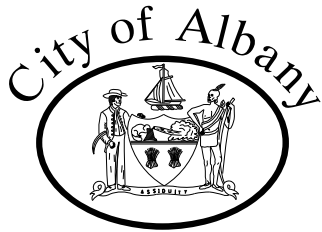
FRISBIE AVENUE
PROFILE

Designed By: J. SCUDDER	Project No.: 086727	Drawing No.: PR-3
Drawn By: A. DAMES	Scale: AS SHOWN	SHEET 11
Checked By: J. SHIELDS	Plot Date: 20-DEC-2024	

FILE NAME = V:\Projects\ANY\K7\086727_000\09_Design\Drawings\Hwy\Frisbie Avenue\086727_cph_pro_04_fa.dgn
DATE/TIME = 20-DEC-2024
USER = 4066



NOT FOR
CONSTRUCTION



IT IS A VIOLATION OF LAW FOR ANY PERSON, UNLESS THEY ARE ACTING UNDER THE DIRECTION OF A LICENSED PROFESSIONAL ENGINEER, ARCHITECT, LANDSCAPE ARCHITECT OR LAND SURVEYOR TO ALTER AN ITEM IN ANY WAY. IF AN ITEM BEARING THE STAMP OF A LICENSED PROFESSIONAL IS ALTERED, THE ALTERING ENGINEER, ARCHITECT, LANDSCAPE ARCHITECT OR LAND SURVEYOR SHALL STAMP THE DOCUMENT AND INCLUDE THE NOTATION "ALTERED BY" FOLLOWED BY THEIR SIGNATURE, THE DATE OF SUCH ALTERATION, AND A SPECIFIC DESCRIPTION OF THE ALTERATION.

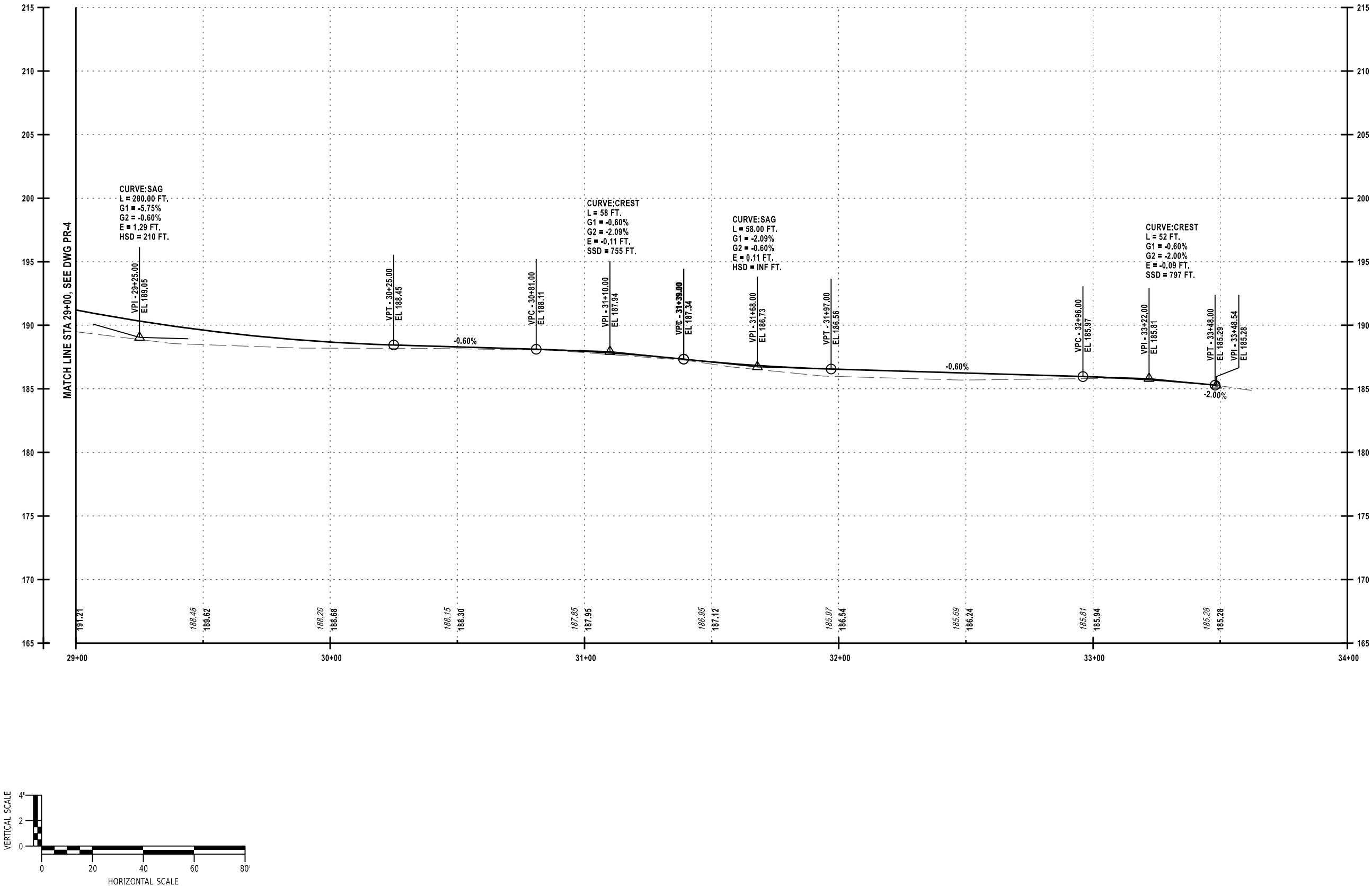
No.	Submittal / Revision	Appd.	Date

PIN 1762.31
FRISBIE AVENUE
REHABILITATION AND
BICYCLE/PEDESTRIAN
INFRASTRUCTURE PROJECT
CITY OF ALBANY,
ALBANY COUNTY, NEW YORK

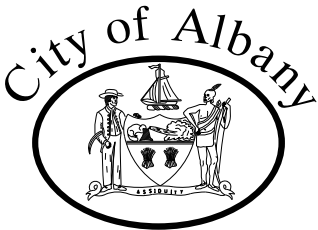
FRISBIE AVENUE
PROFILE

Designed By: J. SCUDDER	Project No.: 086727	Drawing No.: PR-4
Drawn By: A. DAMES	Scale: AS SHOWN	SHEET 12
Checked By: J. SHIELDS	Plot Date: 20-DEC-2024	

FILE NAME = V:\Projects\ANY\K7\086727_000\09_Design\Drawings\Hwy\Frisbie Avenue\086727_cph_pro_05_fa.dgn
DATE/TIME = 20-DEC-2024
USER = 4066



NOT FOR
CONSTRUCTION



IT IS A VIOLATION OF LAW FOR ANY PERSON, UNLESS THEY ARE ACTING UNDER THE DIRECTION OF A LICENSED PROFESSIONAL ENGINEER, ARCHITECT, LANDSCAPE ARCHITECT OR LAND SURVEYOR TO ALTER AN ITEM IN ANY WAY. IF AN ITEM BEARING THE STAMP OF A LICENSED PROFESSIONAL IS ALTERED, THE ALTERING ENGINEER, ARCHITECT, LANDSCAPE ARCHITECT OR LAND SURVEYOR SHALL STAMP THE DOCUMENT AND INCLUDE THE NOTATION "ALTERED BY" FOLLOWED BY THEIR SIGNATURE, THE DATE OF SUCH ALTERATION, AND A SPECIFIC DESCRIPTION OF THE ALTERATION.

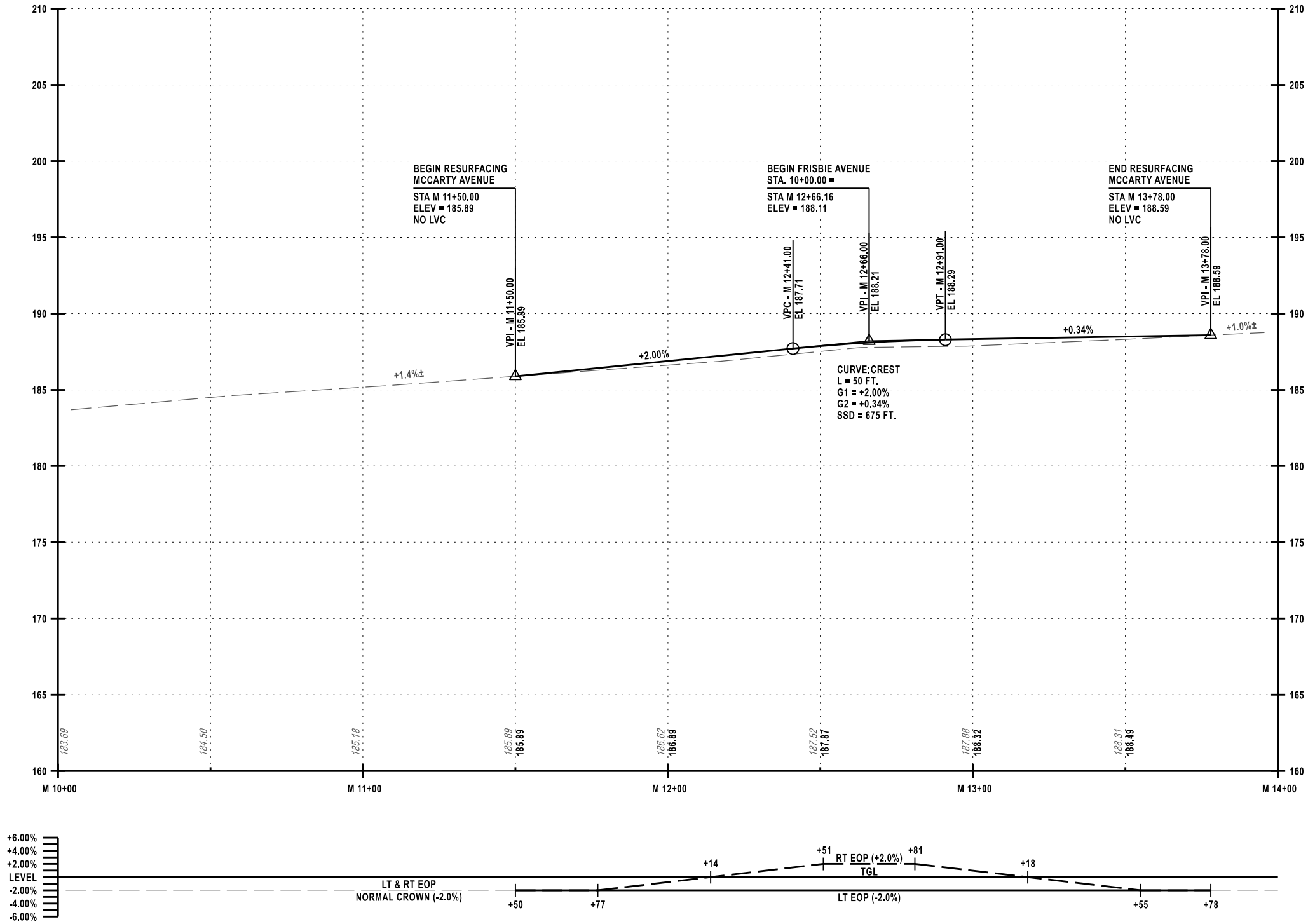
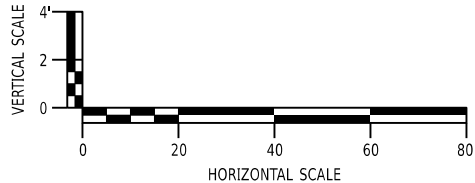
No.	Submittal / Revision	Appd.	Date

PIN 1762.31
FRISBIE AVENUE
REHABILITATION AND
BICYCLE/PEDESTRIAN
INFRASTRUCTURE PROJECT
CITY OF ALBANY,
ALBANY COUNTY, NEW YORK

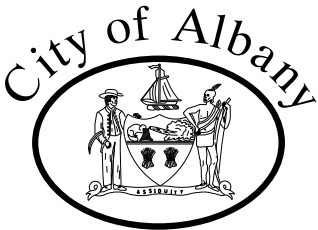
FRISBIE AVENUE
PROFILE

Designed By: J. SCUDDER	Project No.: 086727	Drawing No.: PR-5
Drawn By: A. DAMES	Scale: AS SHOWN	
Checked By: J. SHIELDS	Plot Date: 20-DEC-2024	SHEET 13

FILE NAME = V:\Projects\ANY\K7\086727_000\09_Design\Drawings\Hwy\Frisbie Avenue\086727_cph_pro_06_fa.dgn
DATE/TIME = 20-DEC-2024
USER = 4066



NOT FOR
CONSTRUCTION



IT IS A VIOLATION OF LAW FOR ANY PERSON, UNLESS THEY ARE ACTING UNDER THE DIRECTION OF A LICENSED PROFESSIONAL ENGINEER, ARCHITECT, LANDSCAPE ARCHITECT OR LAND SURVEYOR TO ALTER AN ITEM IN ANY WAY. IF AN ITEM BEARING THE STAMP OF A LICENSED PROFESSIONAL IS ALTERED, THE ALTERING ENGINEER, ARCHITECT, LANDSCAPE ARCHITECT OR LAND SURVEYOR SHALL STAMP THE DOCUMENT AND INCLUDE THE NOTATION "ALTERED BY" FOLLOWED BY THEIR SIGNATURE, THE DATE OF SUCH ALTERATION, AND A SPECIFIC DESCRIPTION OF THE ALTERATION.

No.	Submittal / Revision	Appd.	Date

PIN 1762.31
FRISBIE AVENUE
REHABILITATION AND
BICYCLE/PEDESTRIAN
INFRASTRUCTURE PROJECT
CITY OF ALBANY,
ALBANY COUNTY, NEW YORK

MCCARTY AVENUE
PROFILE

Designed By: J. SCUDDER	Project No.: 086727	Drawing No.: PR-6
Drawn By: A. DAMES	Scale: AS SHOWN	SHEET 13
Checked By: J. SHIELDS	Plot Date: 20-DEC-2024	