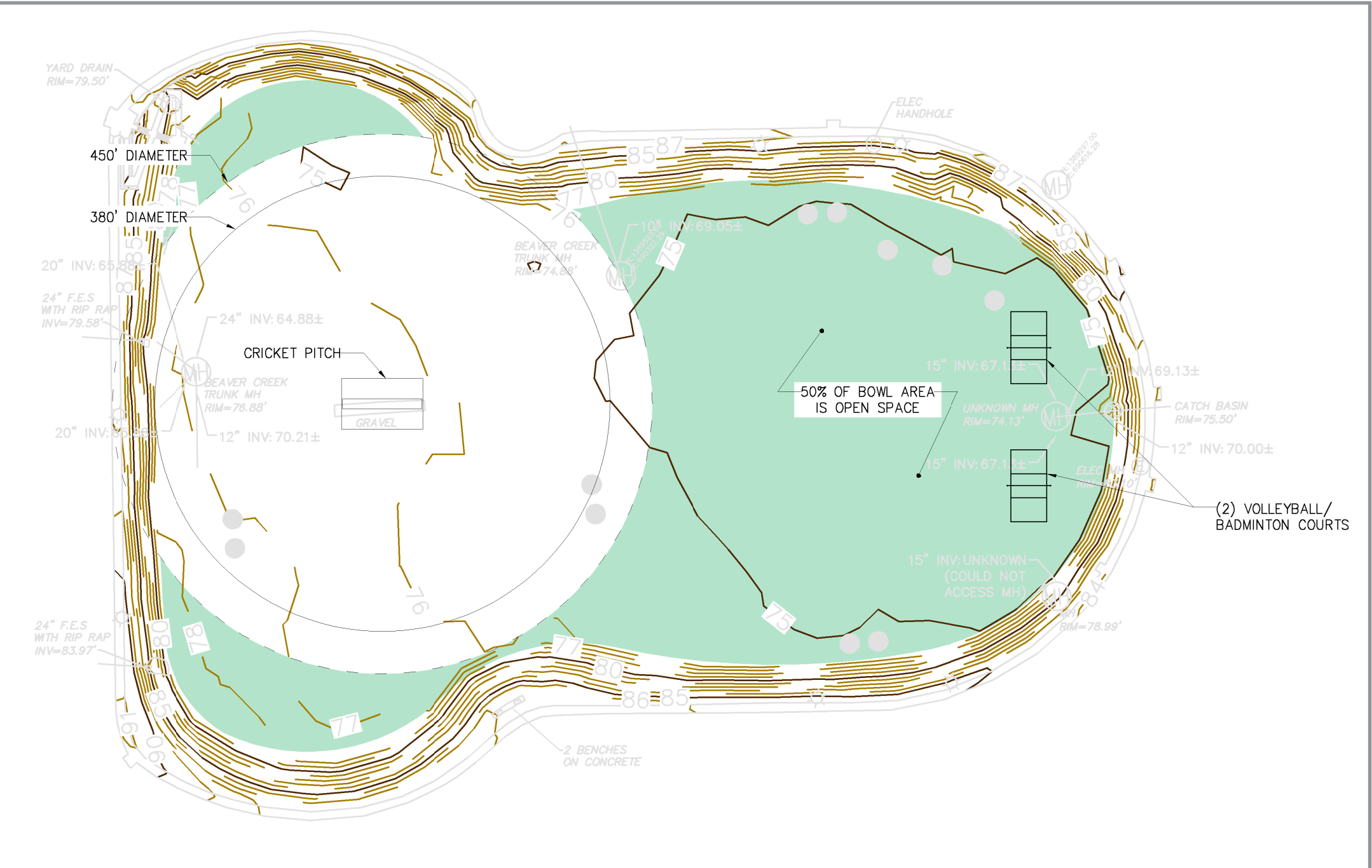
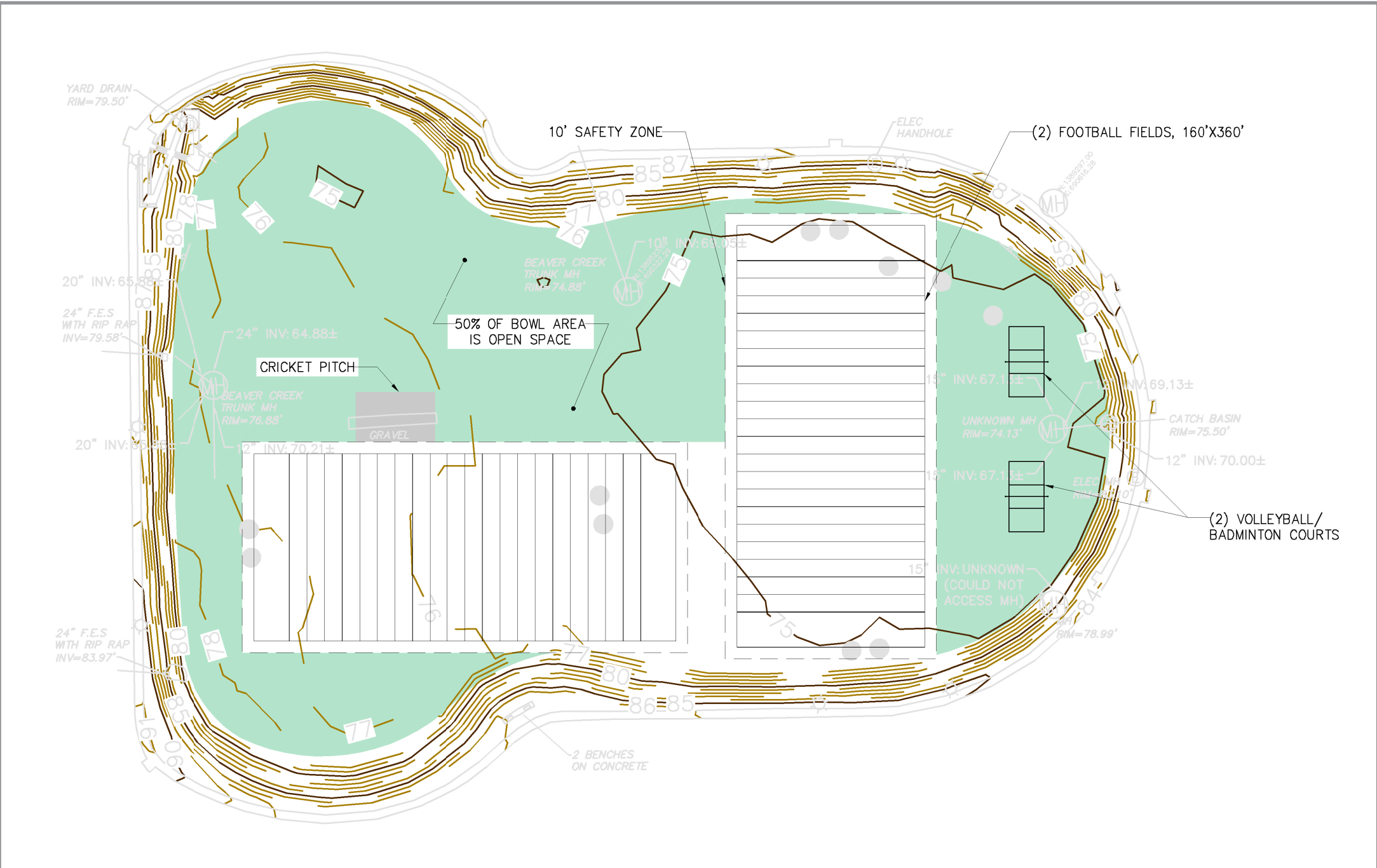


Lincoln Park Bowl Field Improvements

CONCEPT 1: Re-instatement of the existing fields with improved grading and drainage



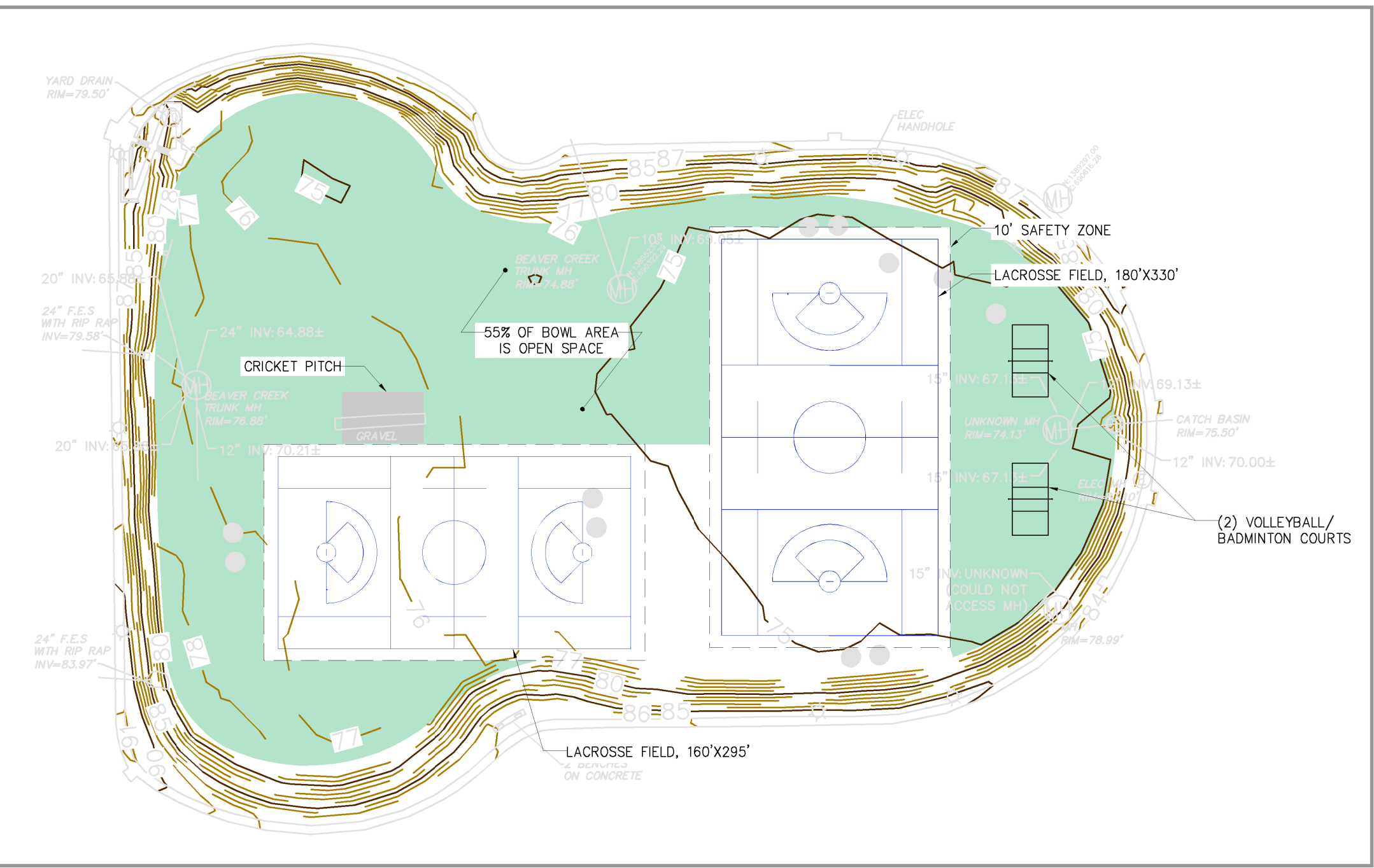
CRICKET



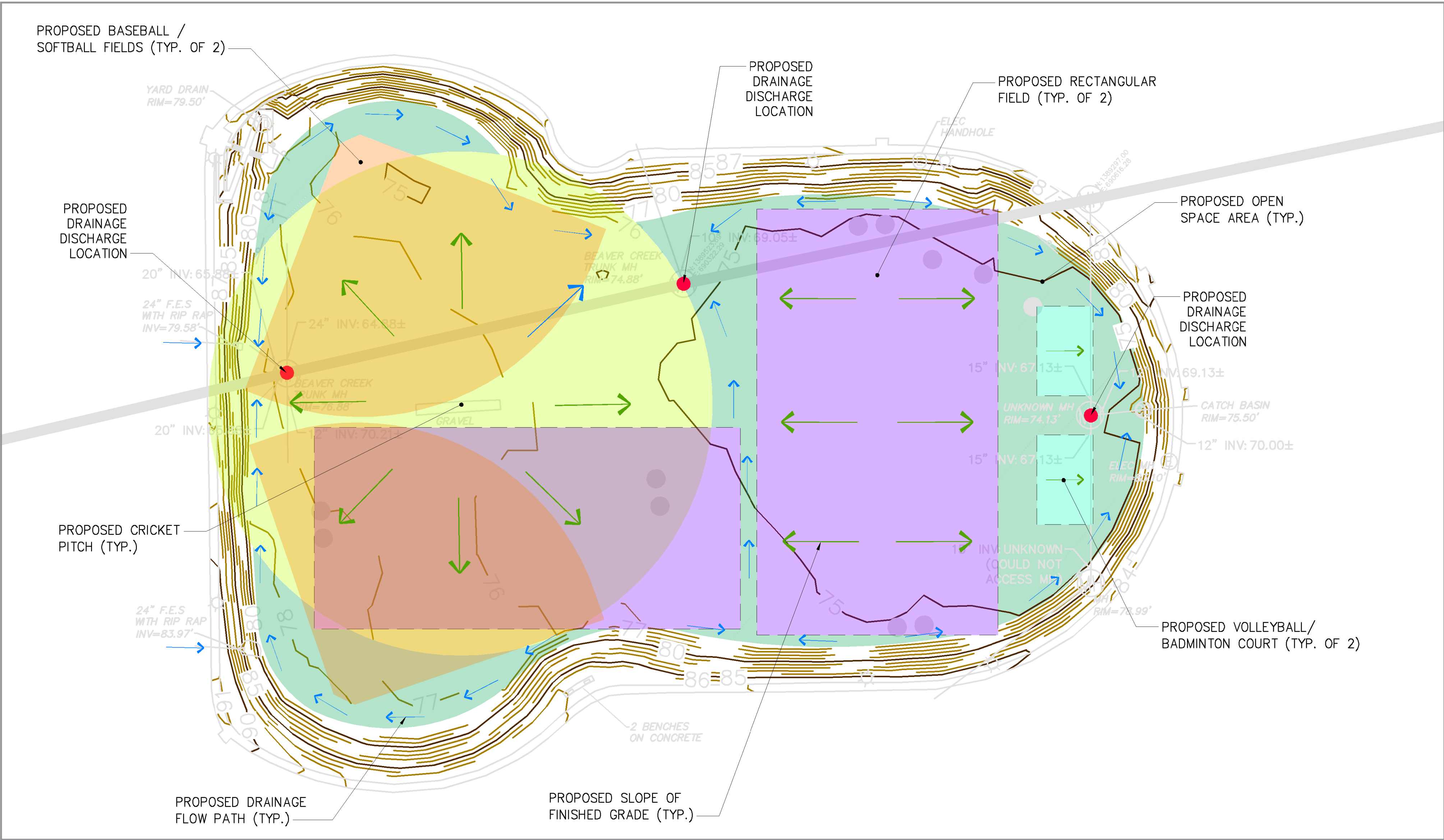
FOOTBALL



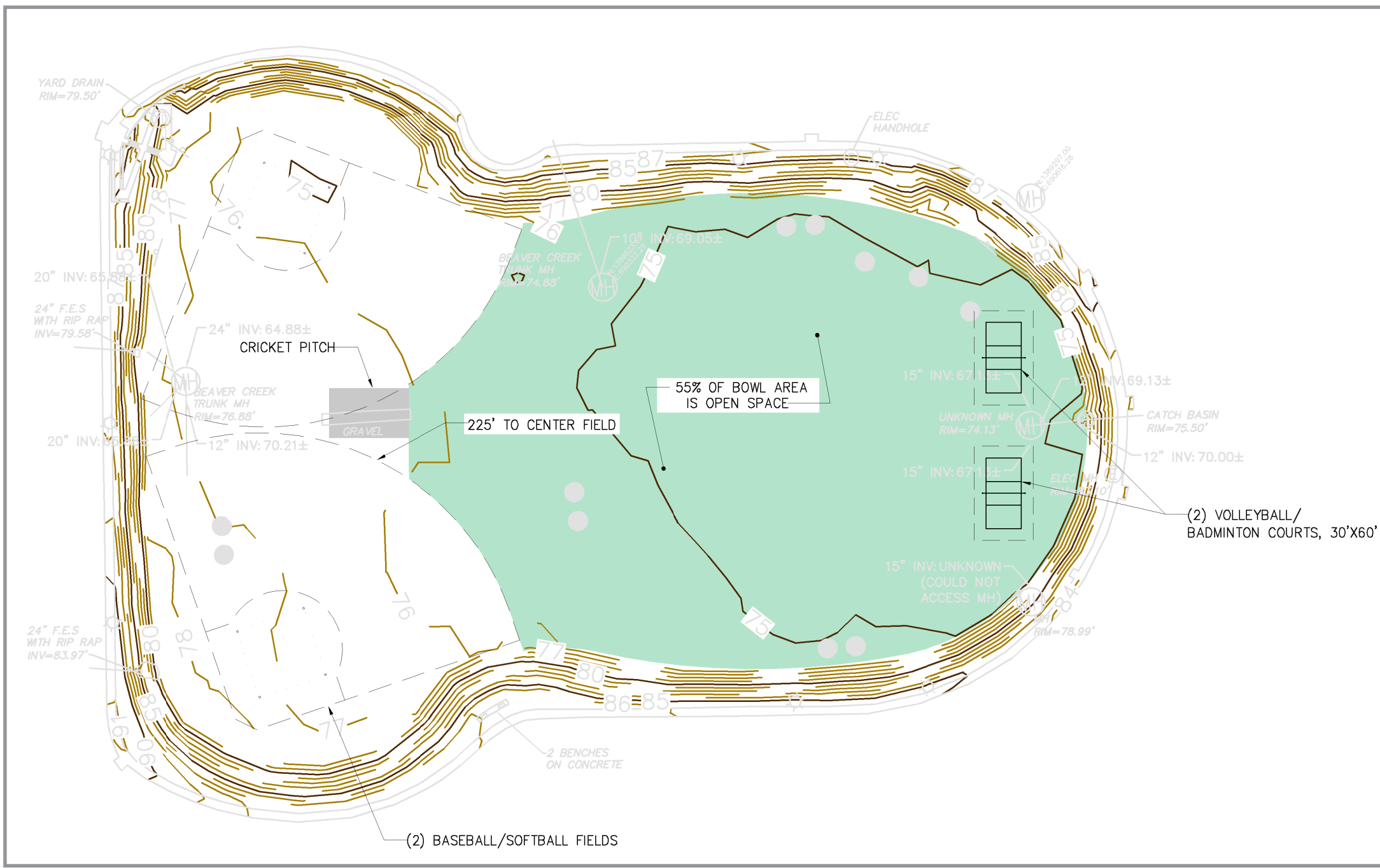
KICKBALL



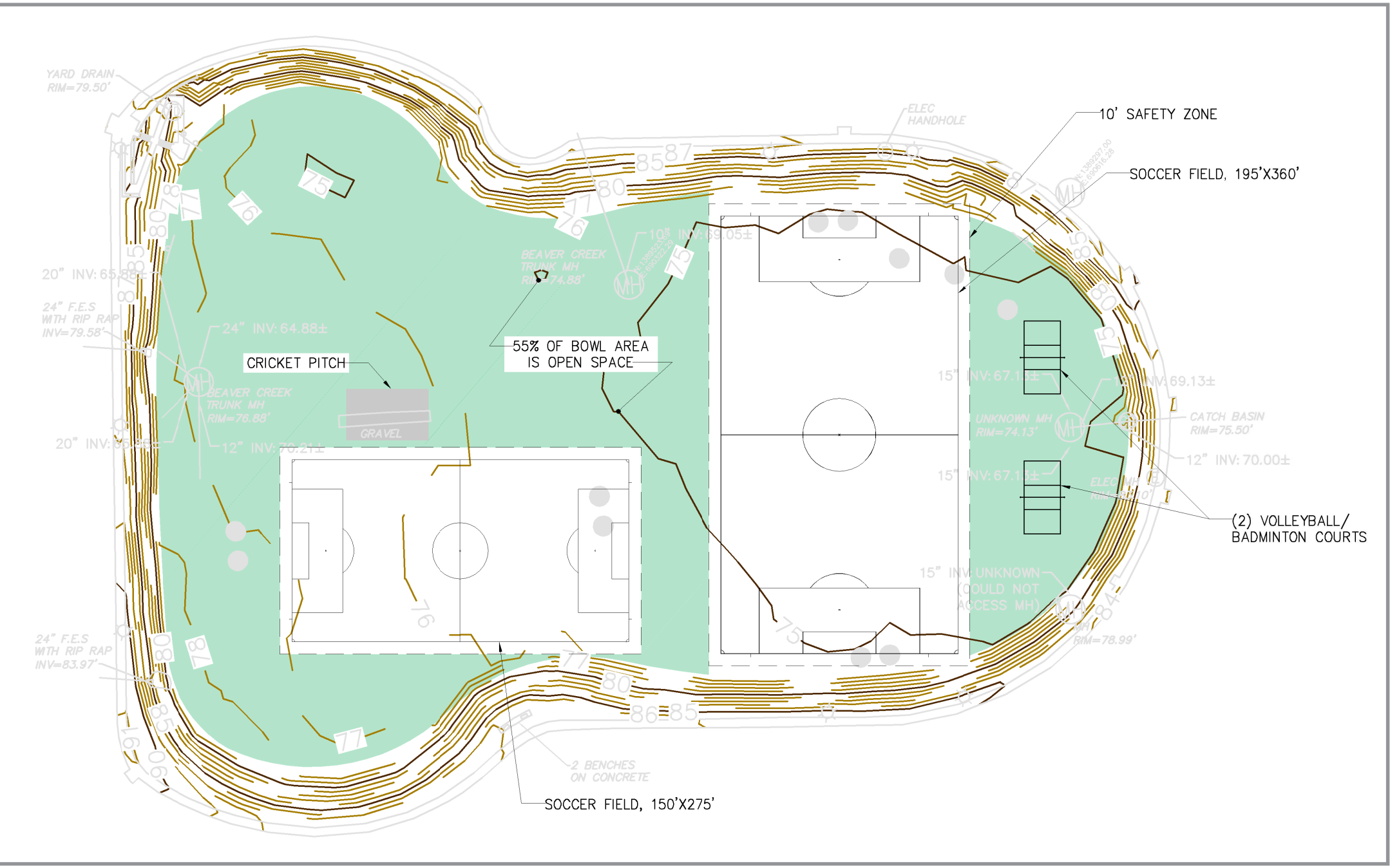
LACROSSE



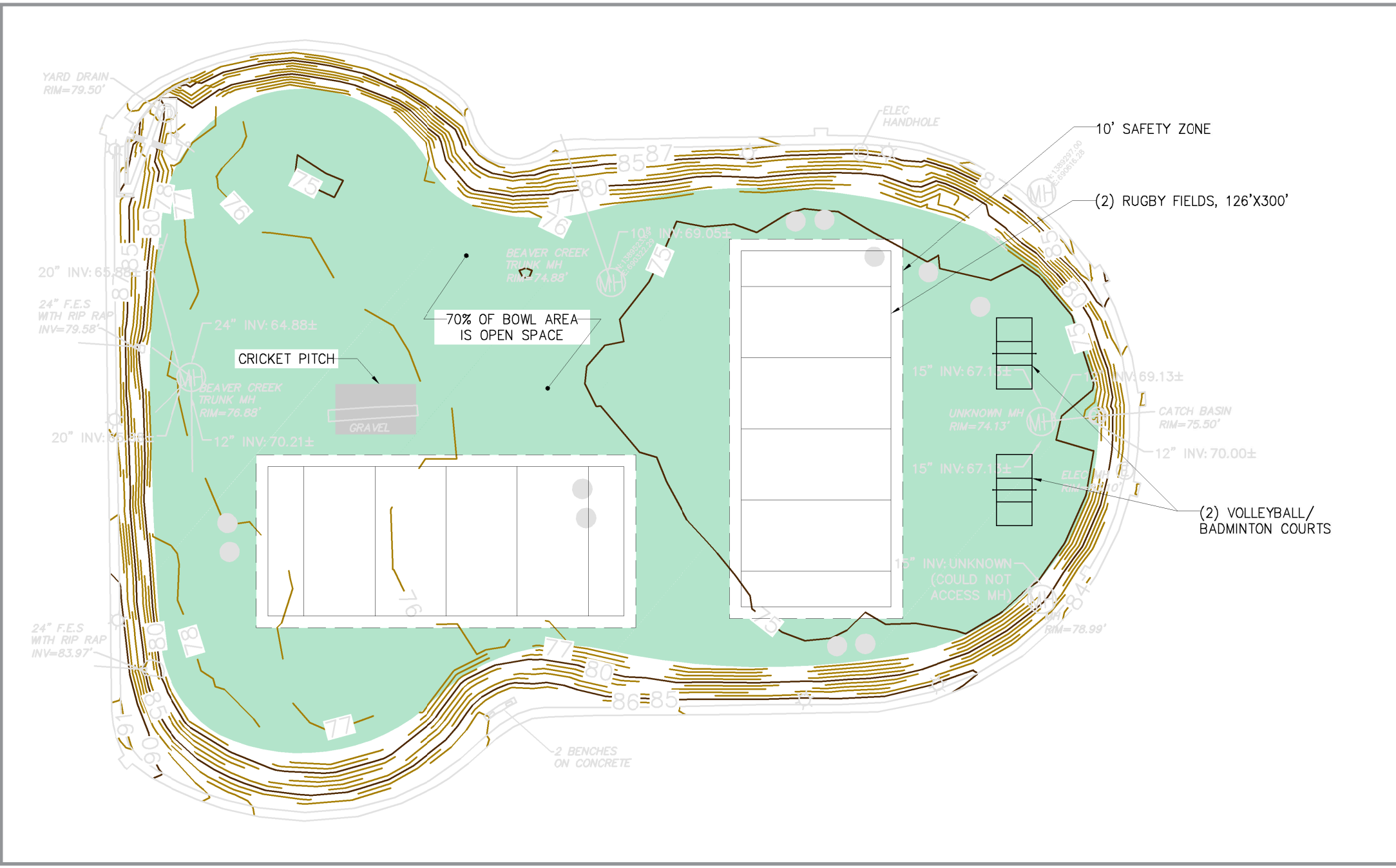
GRADING AND DRAINAGE



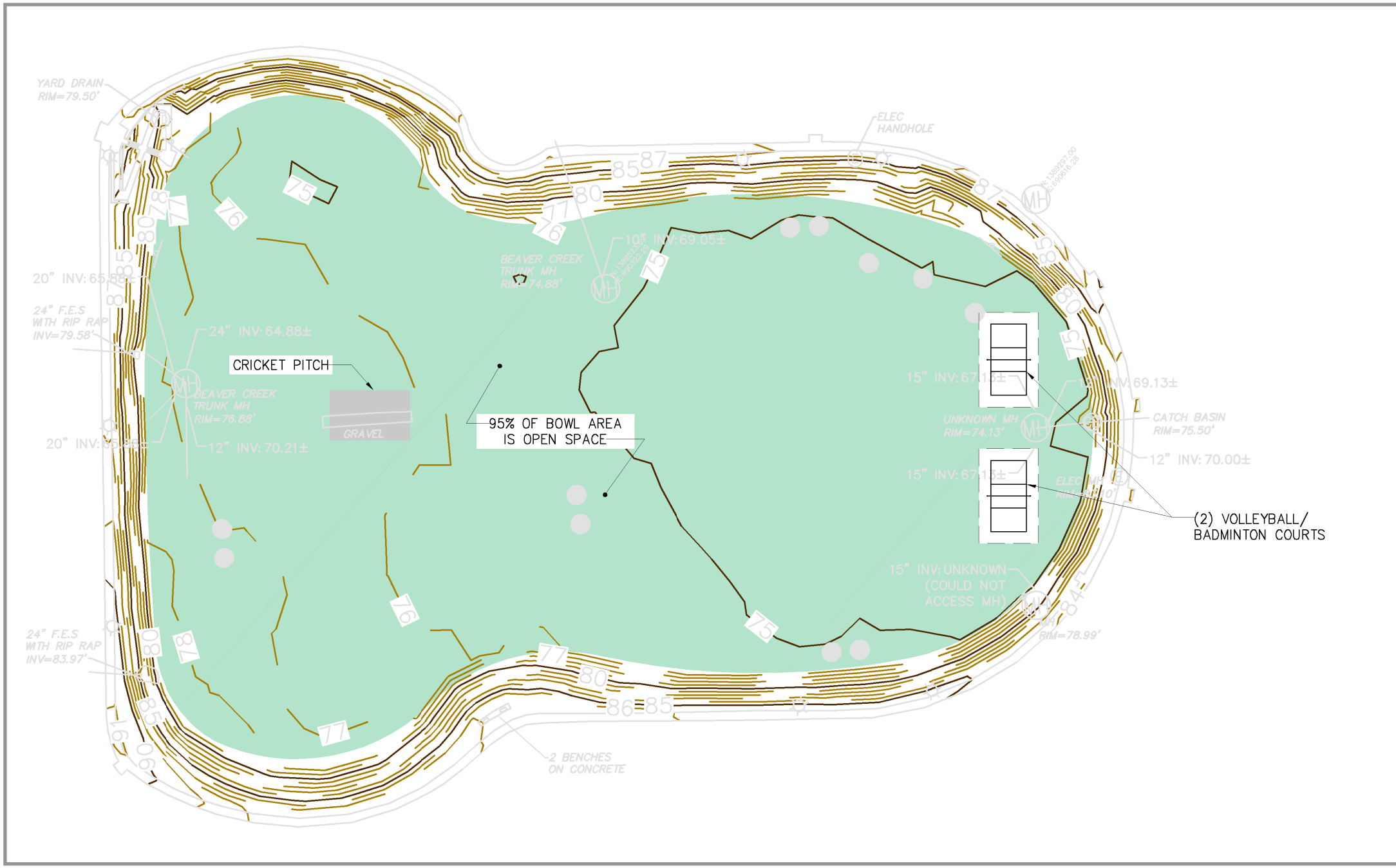
BASEBALL-SOFTBALL



SOCCER

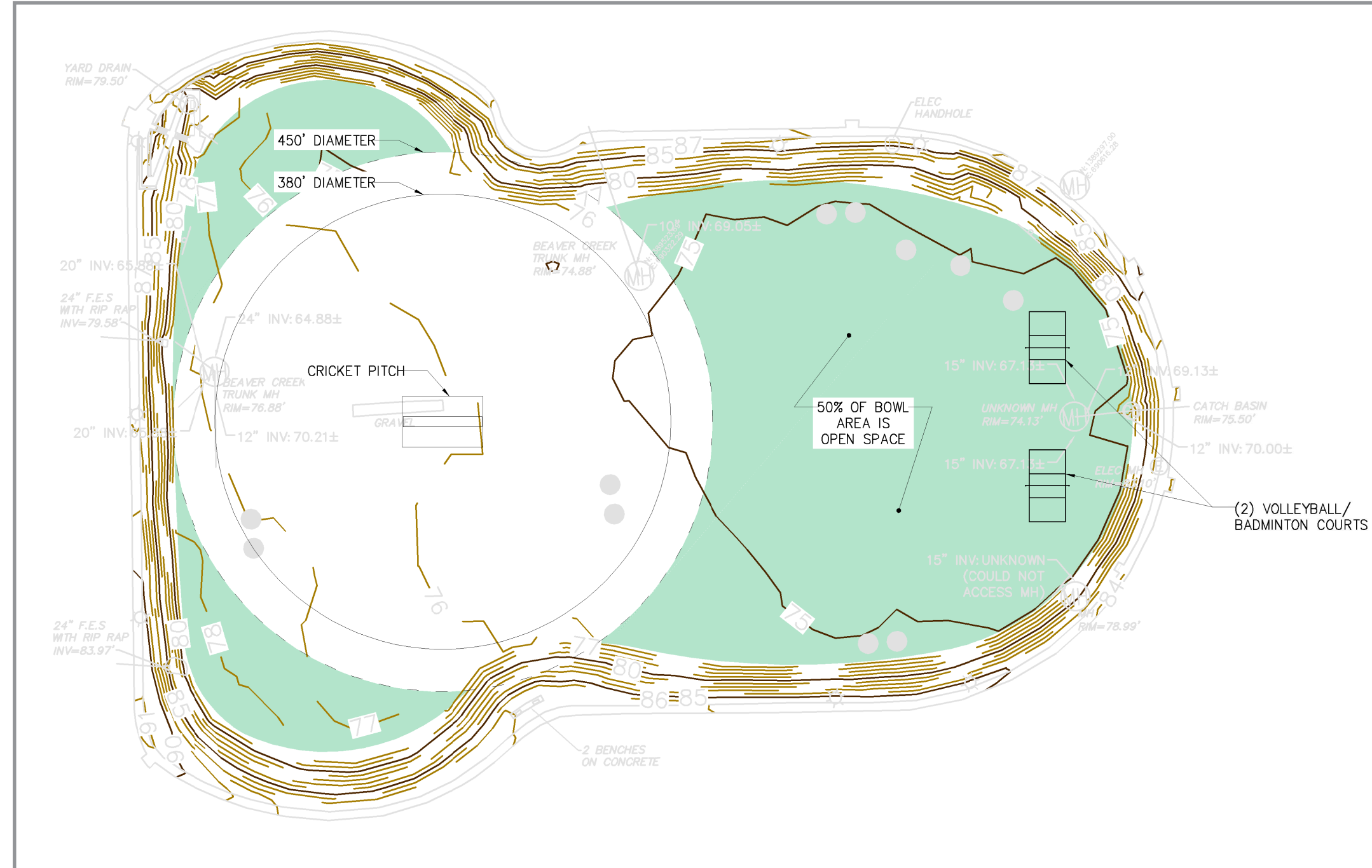
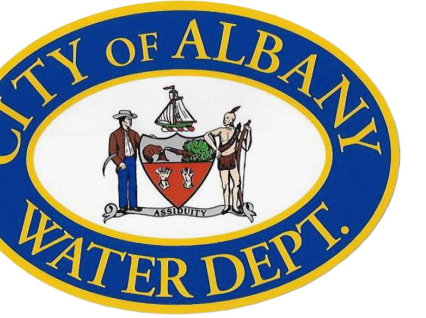


RUGBY

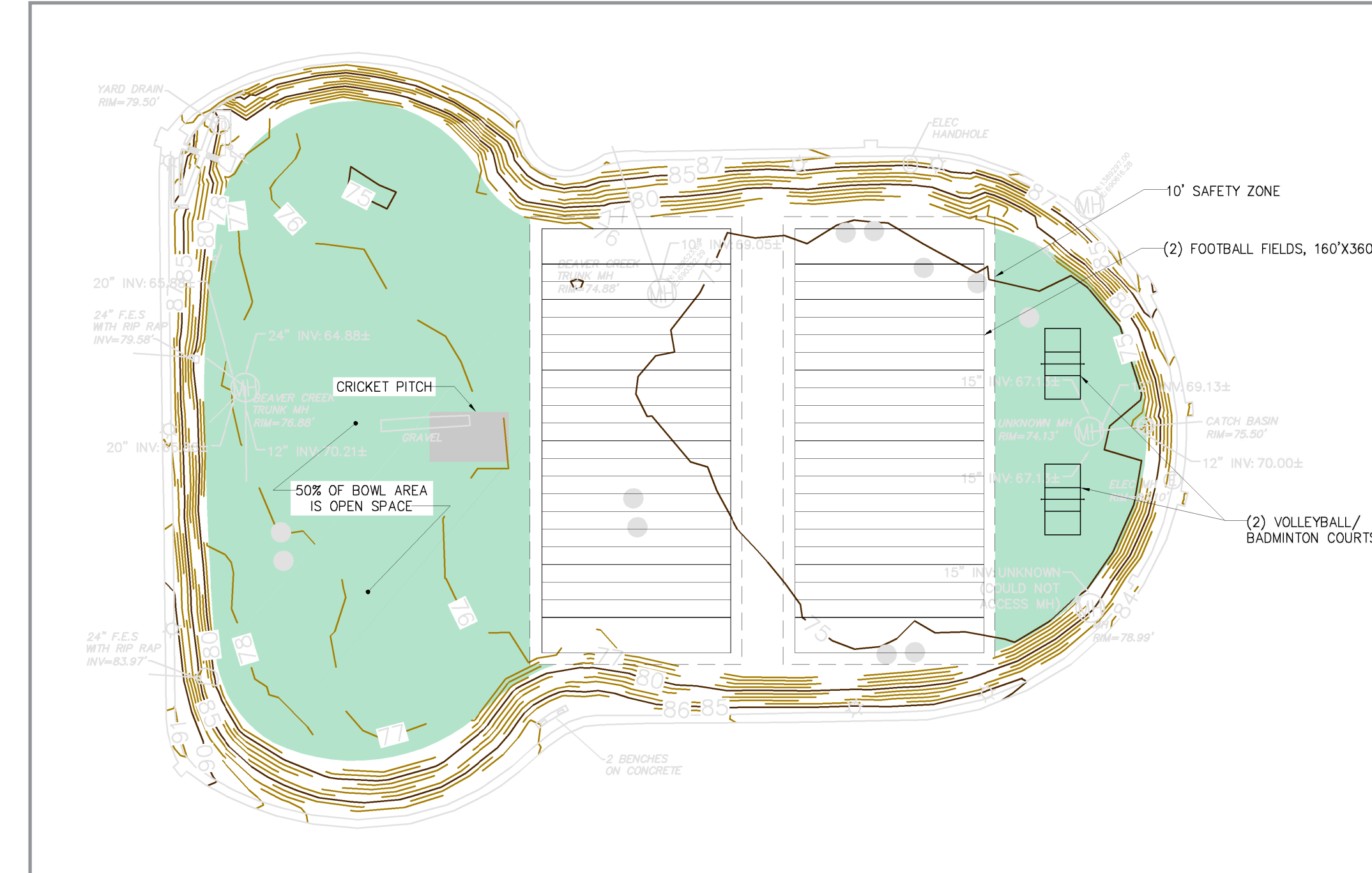


VOLLEYBALL

CONCEPT 2: Re-instatement of the cricket field on the west side of the bowl, with rectangular fields aligned in a N-S configuration to the east



CRICKET



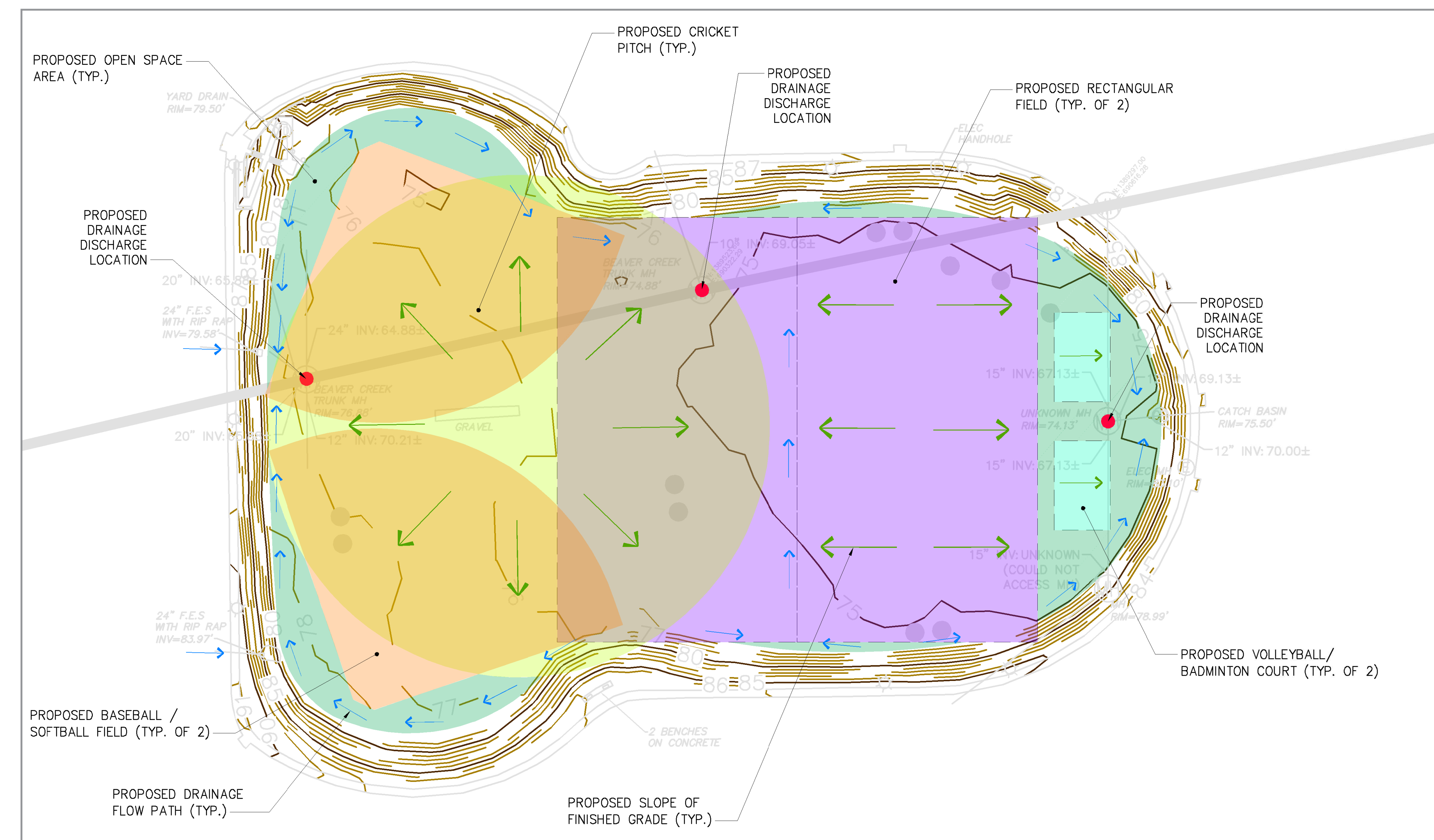
FOOTBALL



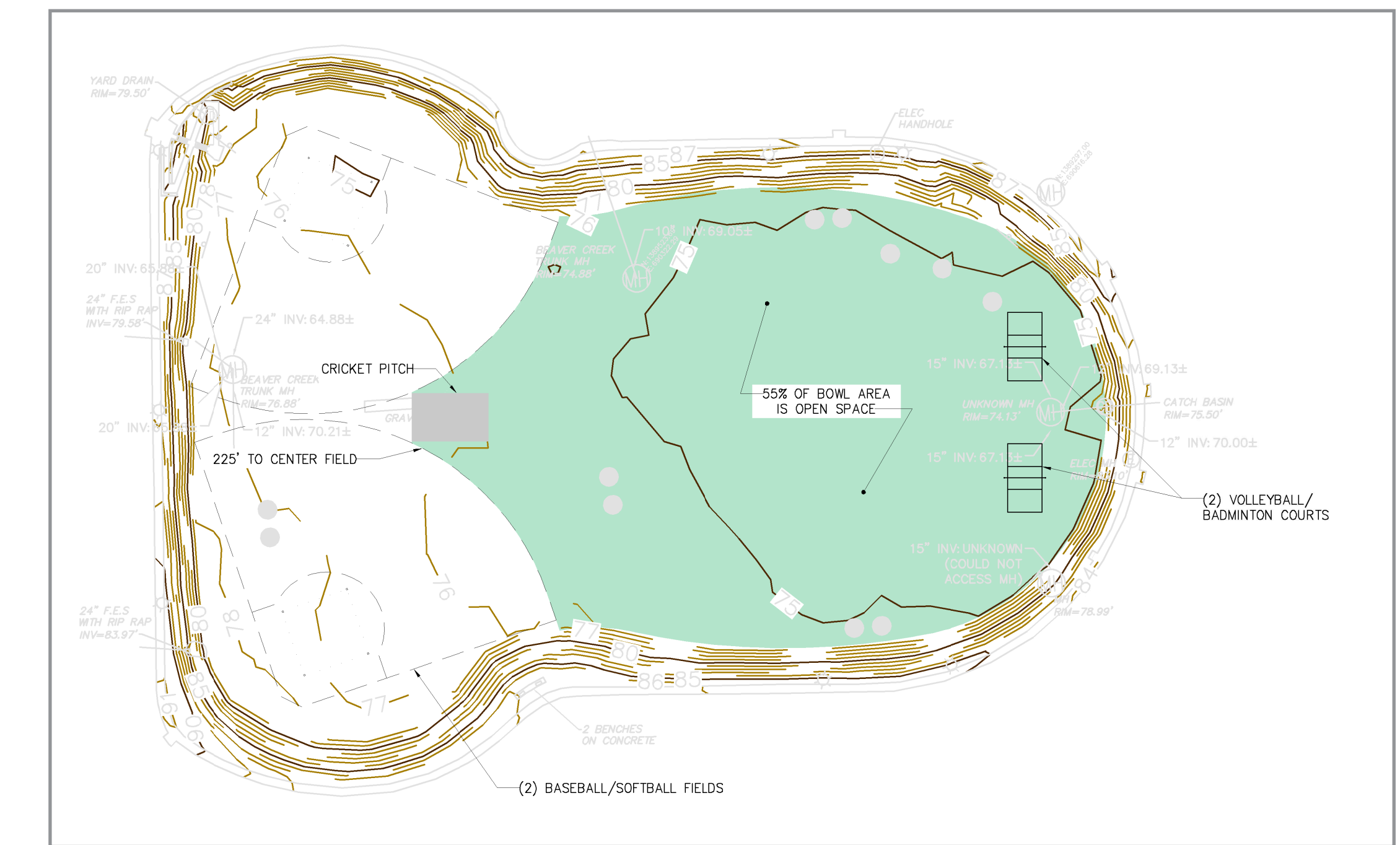
KICKBALL



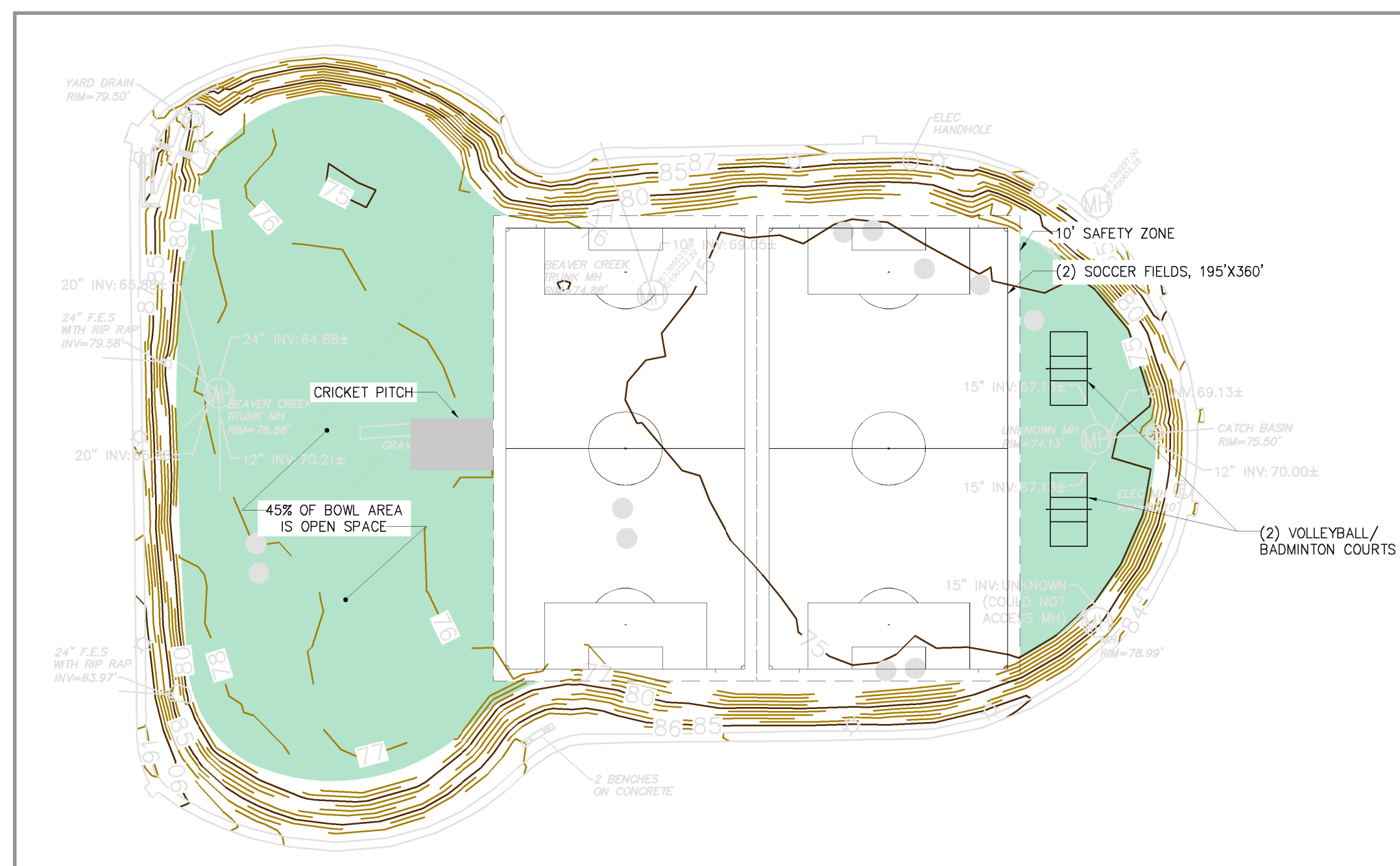
LACROSSE



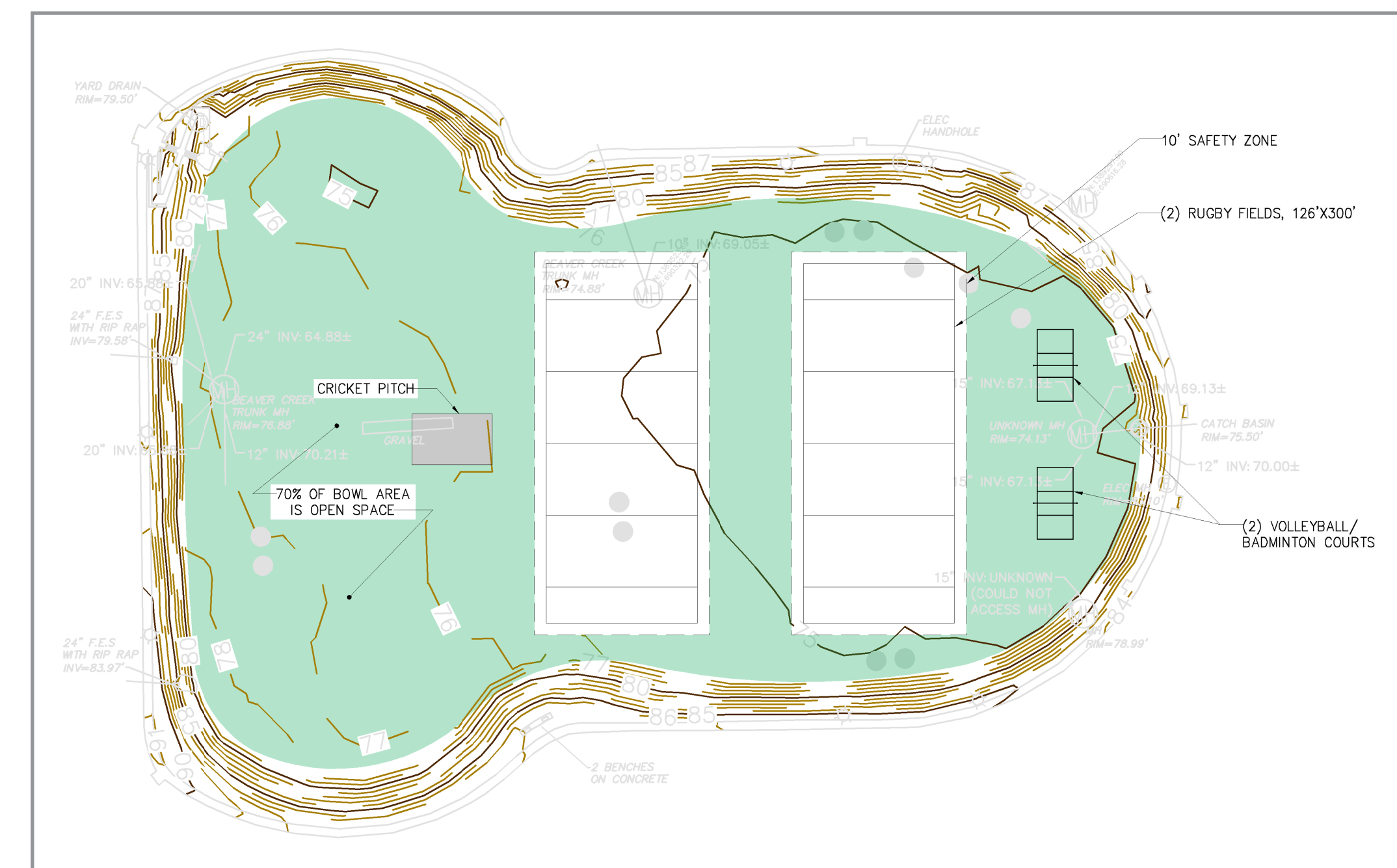
GRADING AND DRAINAGE



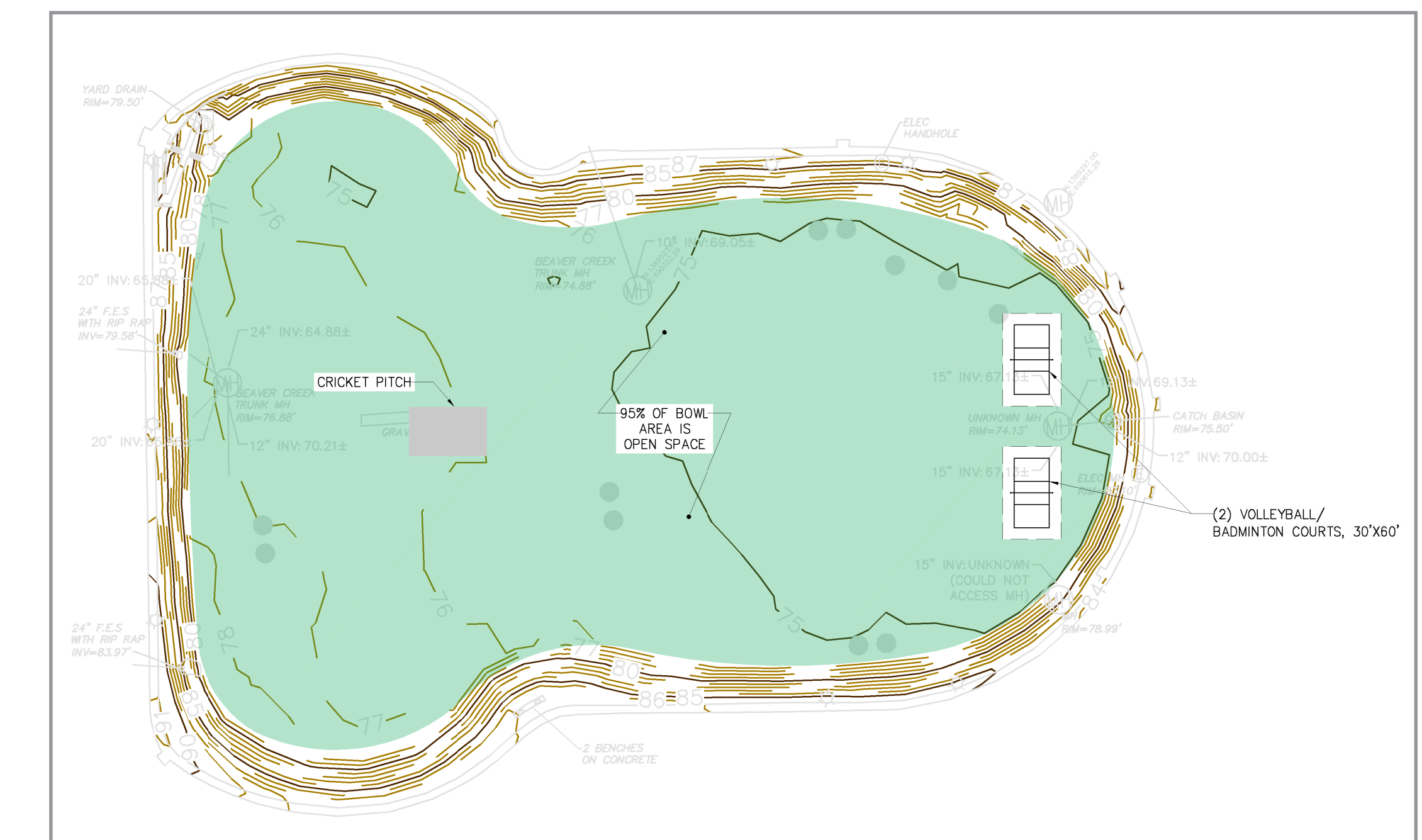
BASEBALL-SOFTBALL



SOC CER



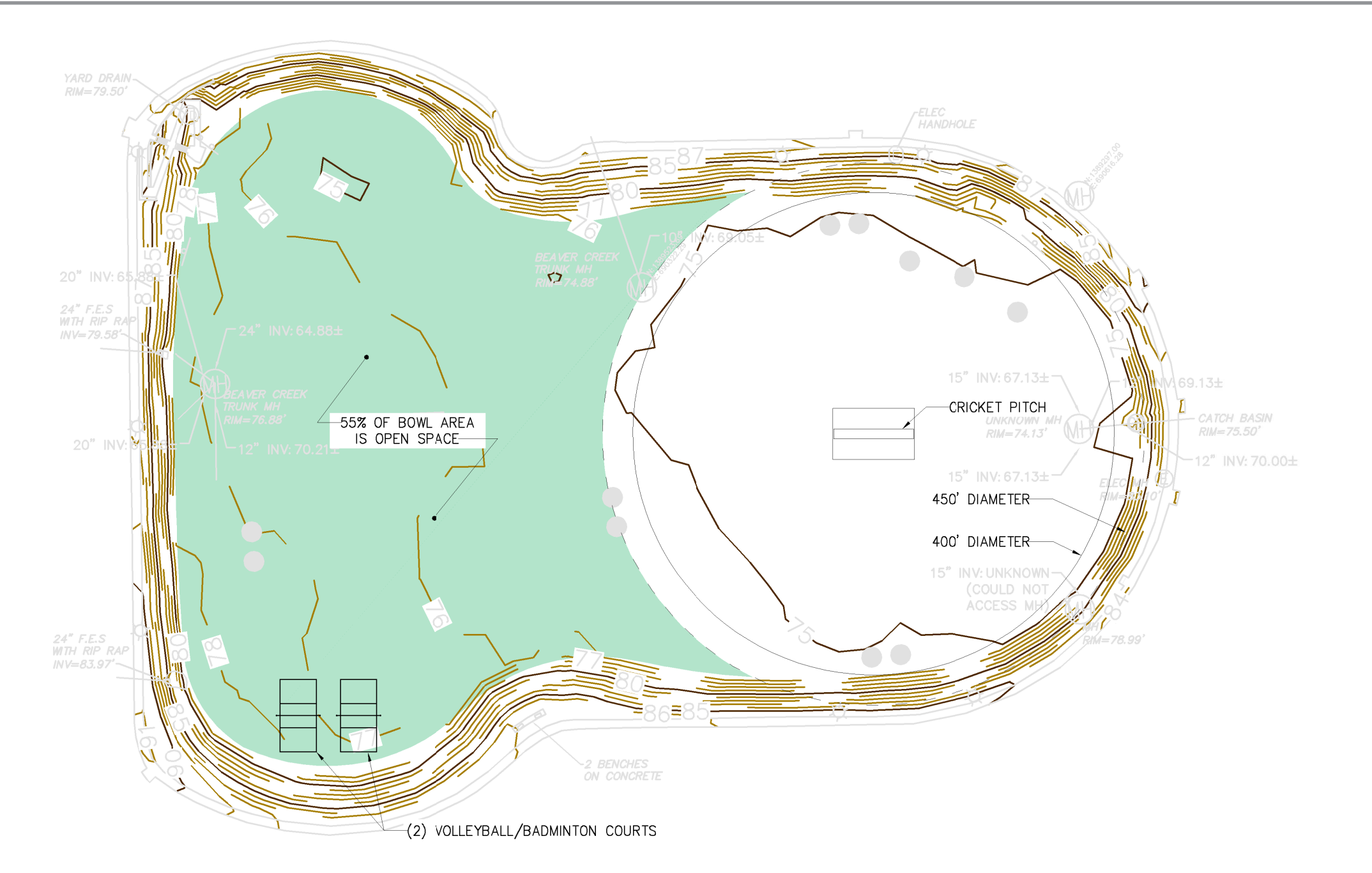
RUGBY



VOLLEYBALL

Lincoln Park Bowl Field Improvements

CONCEPT 3: Re-positioning of the cricket field on the east side of the bowl, with rectangular fields aligned in a N-S configuration to the west



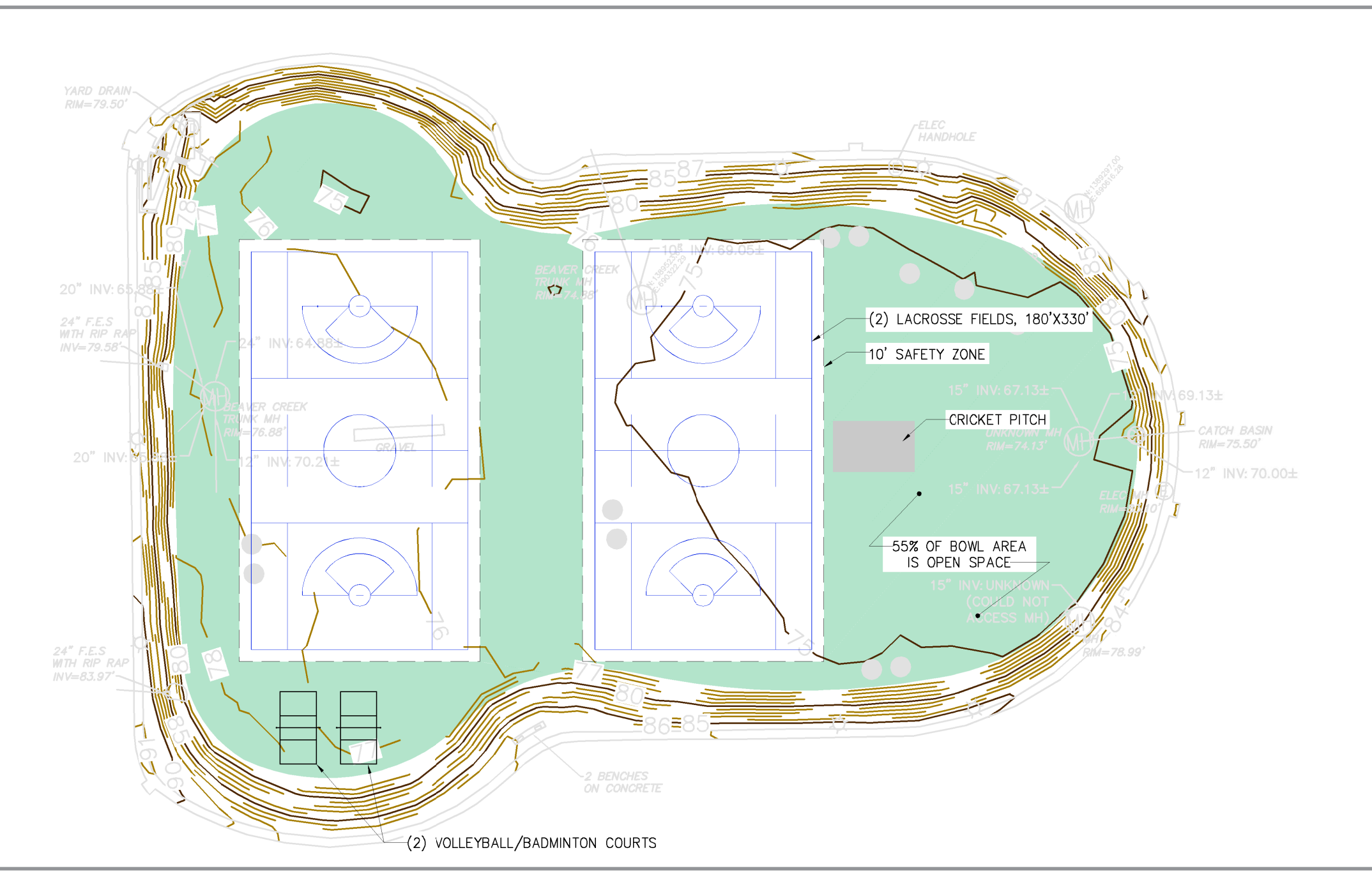
CRICKET



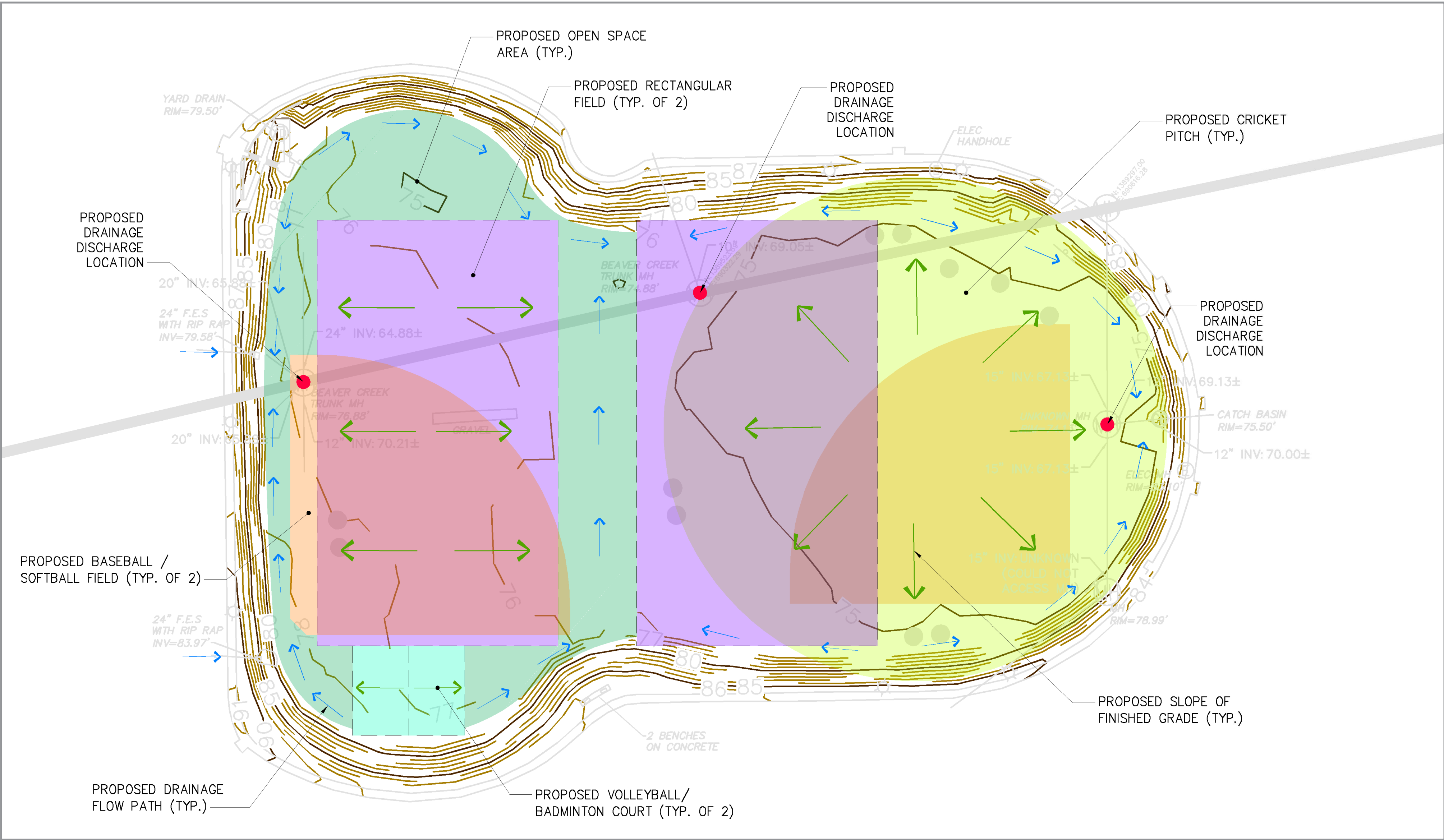
FOOTBALL



KICKBALL



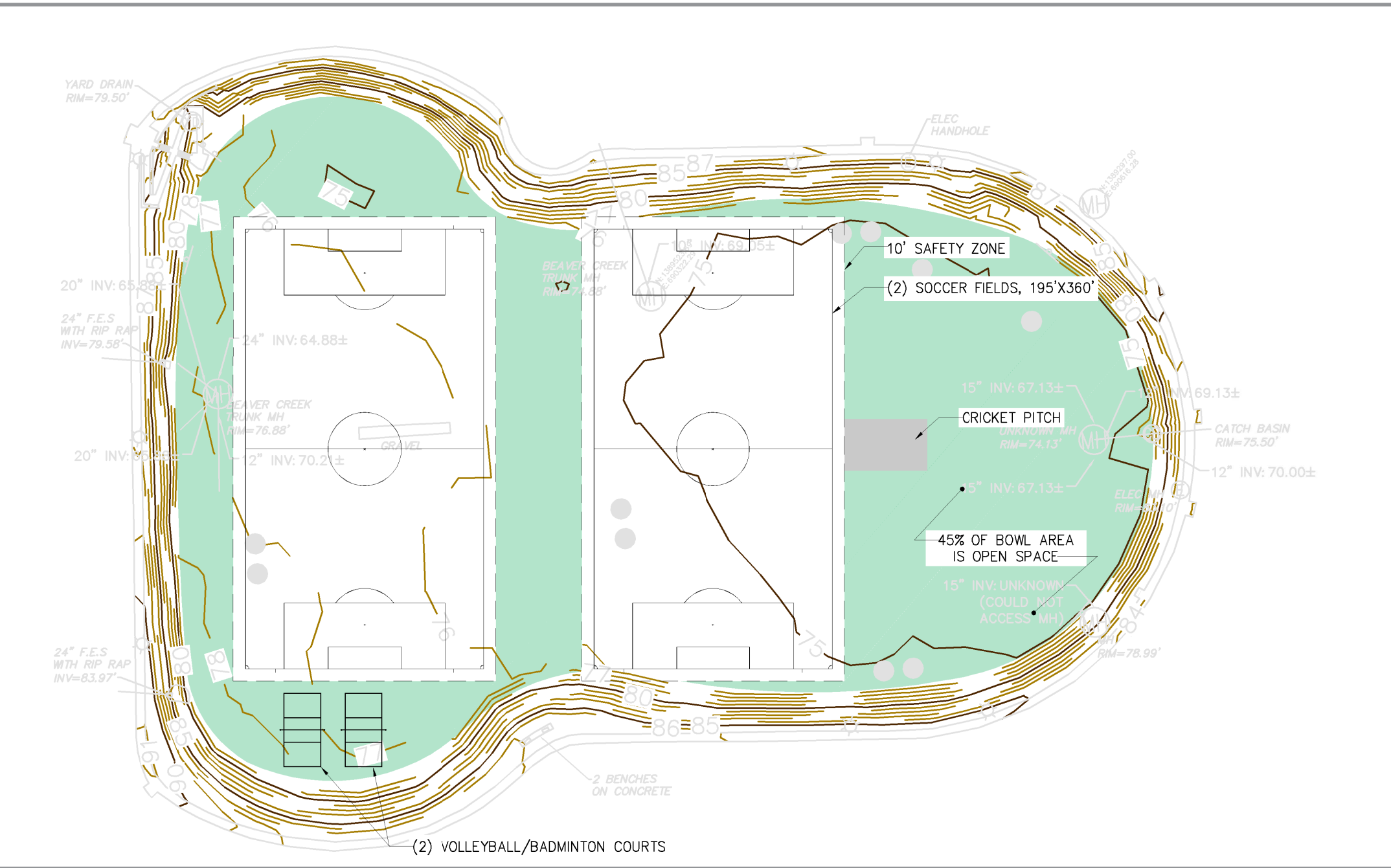
LACROSSE



GRADING AND DRAINAGE



BASEBALL-SOFTBALL



SOCCER



RUGBY



VOLLEYBALL