

# HUDSON RIVER GATEWAYS **PUBLIC MEETING #1**

# WELCOME! A QUICK GUIDE TO ZOOM

This opens a list of participants  
so you can **raise your hand**  
**virtually** by clicking the option  
from the dropdown menu next to  
your name.

Use this to  
submit a  
question

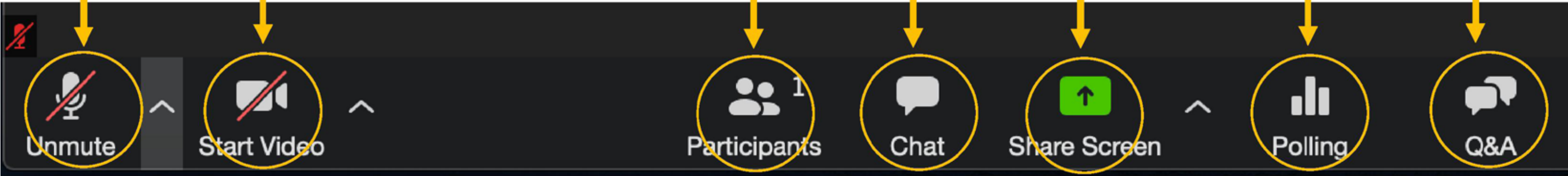
Click this to  
mute or  
unmute your  
microphone.  
(Non-  
panelists are  
muted)

IGNORE  
(DISABLED)

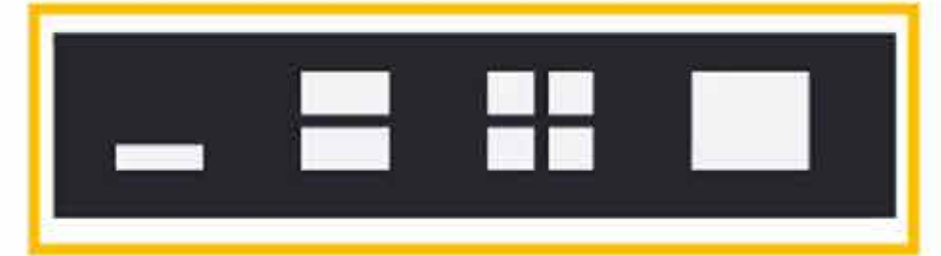
Use this to  
offer  
comments  
during  
discussion

IGNORE  
(DISABLED)

Click here if  
you  
accidentally  
close a poll



# WELCOME! CHANGING YOUR ZOOM LAYOUT



In the upper right corner of your window, you should see a symbol that looks something like one of these.

Clicking through these will change the layout of your screen and allow you to do things like maximize the presentation size or display everyone's video in a gallery format.

# **TONIGHT'S MEETING** AGENDA

- ① **Project Introduction & Goals**
- ② **Existing Sites Discussion**
- ③ **Inspiration & Examples**
- ④ **Discussion**

# HUDSON RIVER GATEWAYS PROJECT GOALS & SCHEDULE

## ① Project Goal

Promote and enhance the connections between downtown Albany, the Warehouse District, and the Riverfront

## ② Project Funding/Grant Money

New York State Department of State’s Local Waterfront Revitalization Program under Title 11 of the Environmental Protection Fund

## ③ Project Team



**City of Albany**  
Owner

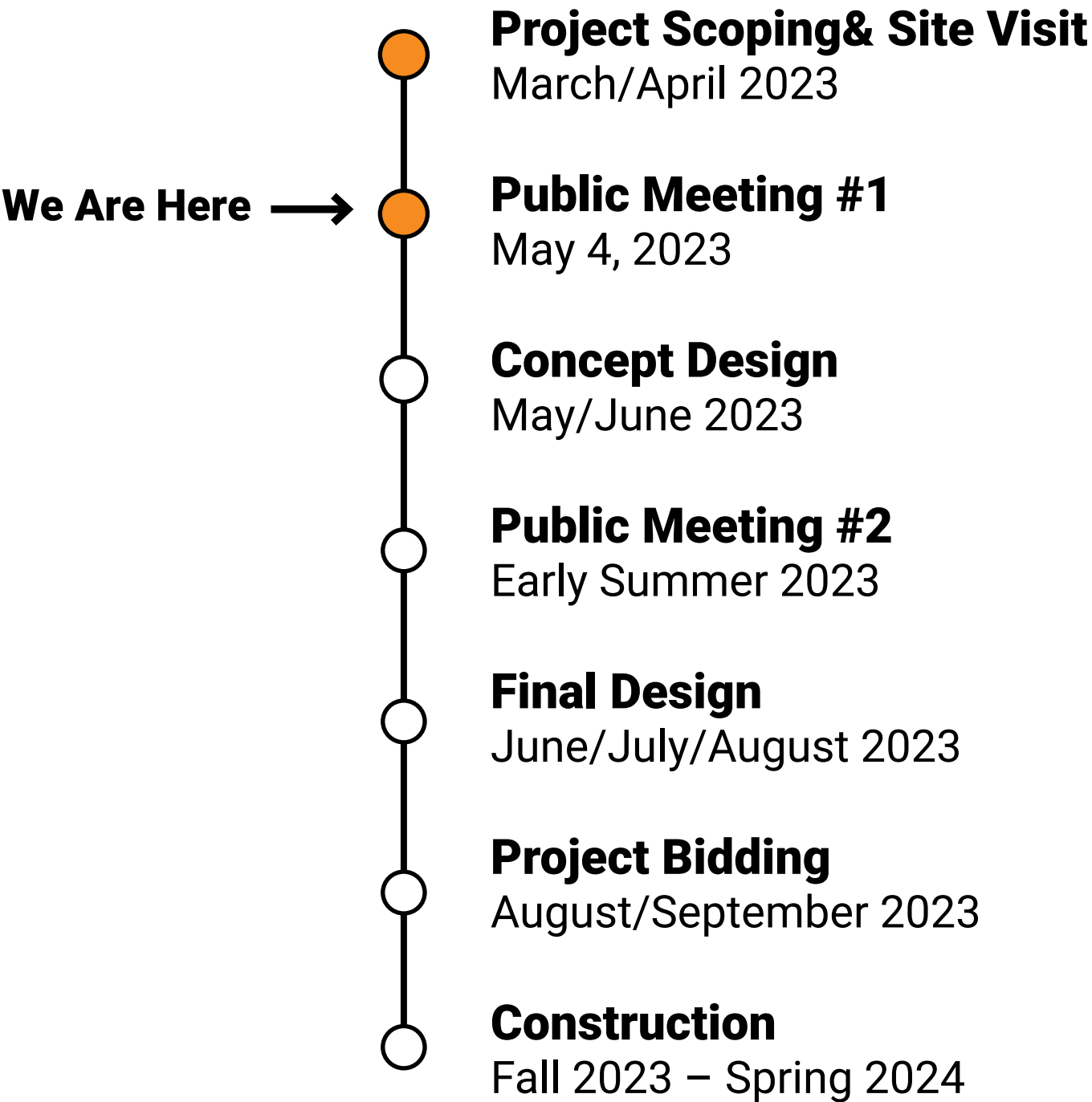


**Highland Planning**  
Public Engagement



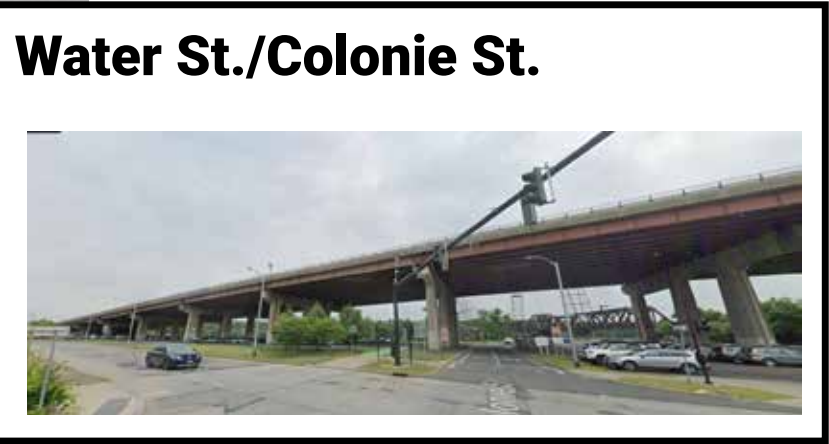
**Stantec Planning & Landscape Architecture**  
Design Consultant

## ④ Project Schedule





# SITE CONTEXT GATEWAY LOCATIONS & GREATER CONNECTIONS





# NORTHERN GATEWAY HOW DO YOU FEEL ABOUT THE SPACE AS IT IS TODAY?

- What's your current perception of this location?
- How might these areas be used in the future (10-15 years)?
- Is there anything about this location (history, nearby neighborhoods or landmarks) that you think should be considered or represented through the gateway concept?



**Notes:** Pull-off to Riverfront parking is easy to miss when exiting 787 on Water St.



**Notes:** Good view of bridge and Riverfront, but is apparent dead-end for pedestrian and bicycle use



**Notes:** Dominating hardscape



**Notes:** 1-way traffic with no entry for vehicles coming from Water St. , dominating hardscape



# SOUTHERN GATEWAY HOW DO YOU FEEL ABOUT THE SPACE AS IT IS TODAY?

- What's your current perception of this location?
- How might these areas be used in the future (10-15 years)?
- Is there anything about this location (history, nearby neighborhoods or landmarks) that you think should be considered or represented through the gateway concept?



**Notes:** Hard to see Southern Gateway from Downtown, could use visual/structural element to signal or draw people to the gateway and further to the Riverfront



**Notes:** Dominating hardscape with no clear indication Riverfront is beyond underpass



**Notes:** Low level of lighting in underpass area, worn out roadway markings



**Notes:** Dominating hardscape with no clear indication of Downtown beyond underpass easy to miss when traveling on the nearby multi-use trail, landscape areas in shadow of 787



# GATEWAY IMPROVEMENT IDEAS **INSPIRATION & EXAMPLES**

## **SOME BIG IDEAS WE'D LIKE FEEDBACK ON...**

PAINT & MARKINGS

LIGHTING INSTALLATIONS

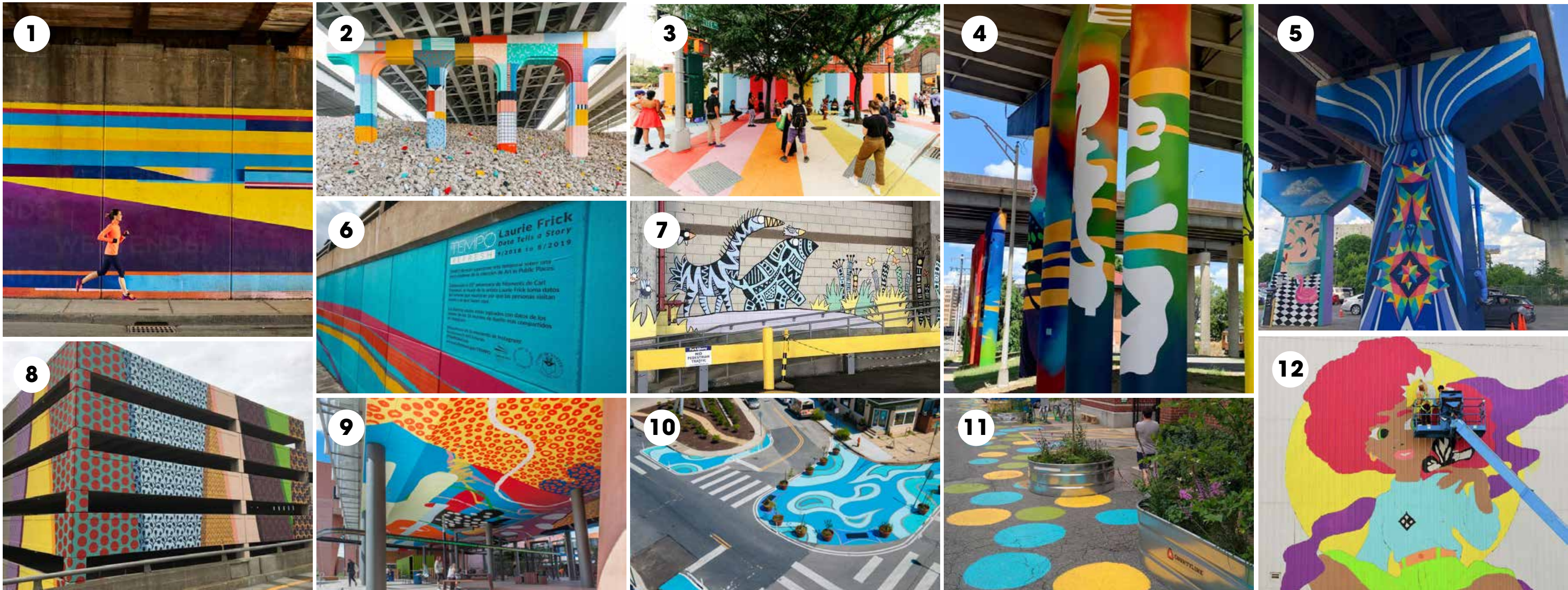
ICONIC SCULPTURE/LANDMARK SIGN

LANDSCAPE IMPROVEMENTS



# PAINT AND MARKINGS

- Colorful expressions to draw people in
- Murals on ground could continue onto vertical surfaces
- Could be themed around things like Albany colors, water/Hudson River, art installs/various muralists, cohesive graphics/abstract color blocking, graffiti-style, native plant or animal species, new/old folk lore, etc.





# LIGHTING INSTALLATIONS

- Could be simple washes of light or more intentional light sculptures (like at Skyway)
- Lighting colors or shapes of fixtures could relate to murals (having colorful interest during the day and night)
- Could be quirky light poles or off-the-shelf lighting fixtures
- Incorporate projections? (seen at night)





# ICONIC SCULPTURE/LANDMARK SIGN

- A landmark piece that creates a unique beacon that draws people to the gateways.
- Would be visible in day/night and would make a 'photo opportunity.'
- Create a new element to the skyline and/or make a unique piece that gives a sense of place/identity
- Uniquely 'Albany' (based on a current saying/tradition of Albany / plays off the quirkiness of local saying/traditions)





# LANDSCAPE IMPROVEMENTS

- Use landscape to ‘dress up/clean up’ gateway zones.(boulder/rock gardens)
- Playful hardscape or durable materials (i.e. benches, landforms, shapes, playful placement of rocks).
- Basic planting improvements like maintenance/pruning of existing planting or limited new plantings.





# ANY PREFERENCES? ANYTHING MISSING?

## PAINT AND MARKINGS



## LIGHTING INSTALLATIONS



## ICONIC SCULPTURE/LANDMARK SIGN



## LANDSCAPE IMPROVEMENTS





# HOW MIGHT THESE IDEAS APPLY TO THE NORTHERN GATEWAY?

## PAINT AND MARKINGS



## LIGHTING INSTALLATIONS



## ICONIC SCULPTURE/LANDMARK SIGN



## LANDSCAPE IMPROVEMENTS





# HOW MIGHT THESE IDEAS APPLY TO THE SOUTHERN GATEWAY?

## PAINT AND MARKINGS



## LIGHTING INSTALLATIONS



## ICONIC SCULPTURE/LANDMARK SIGN



## LANDSCAPE IMPROVEMENTS





# THINKING ABOUT FUTURE PROGRAMMING/EVENTS

What types of activities/uses could you envision for the Northern Gateway in the future?

-Could create spaces for new activities like...skating, hanging out/sitting, playing, court games, climbing walls, parkour, markets, flea markets/vintage markets, festivals, arts showcases/events, lighting installations, concerts, community space, etc.





# **FUTURE CONSIDERATIONS**

## **SOME OTHER IDEAS WE'RE THINKING ABOUT...**

BICYCLE CONNECTIONS

PEDESTRIAN CONNECTIONS

SAFETY IMPROVEMENTS

ACCESSIBILITY IMPROVEMENTS

**ANYTHING WE'RE MISSING?**



# THANKS FOR JOINING US! NEXT STEPS & WAYS TO KEEP IN TOUCH

## City Project Page

[www.albanyny.gov/2147/Hudson-River-Waterfront-Gateways](http://www.albanyny.gov/2147/Hudson-River-Waterfront-Gateways)

## City Email

[dpd@albanyny.gov](mailto:dpd@albanyny.gov)

## Project Schedule

