

Brevator Street Reconstruction

City of Albany, Albany County, New York

Public Meeting · Tuesday May 16, 6:00 PM - 7:30 PM

Preliminary Brevator Street Plans and Cross-sections

May 2023



Weston & SampsonSM

IN CLOSE COLLABORATION WITH



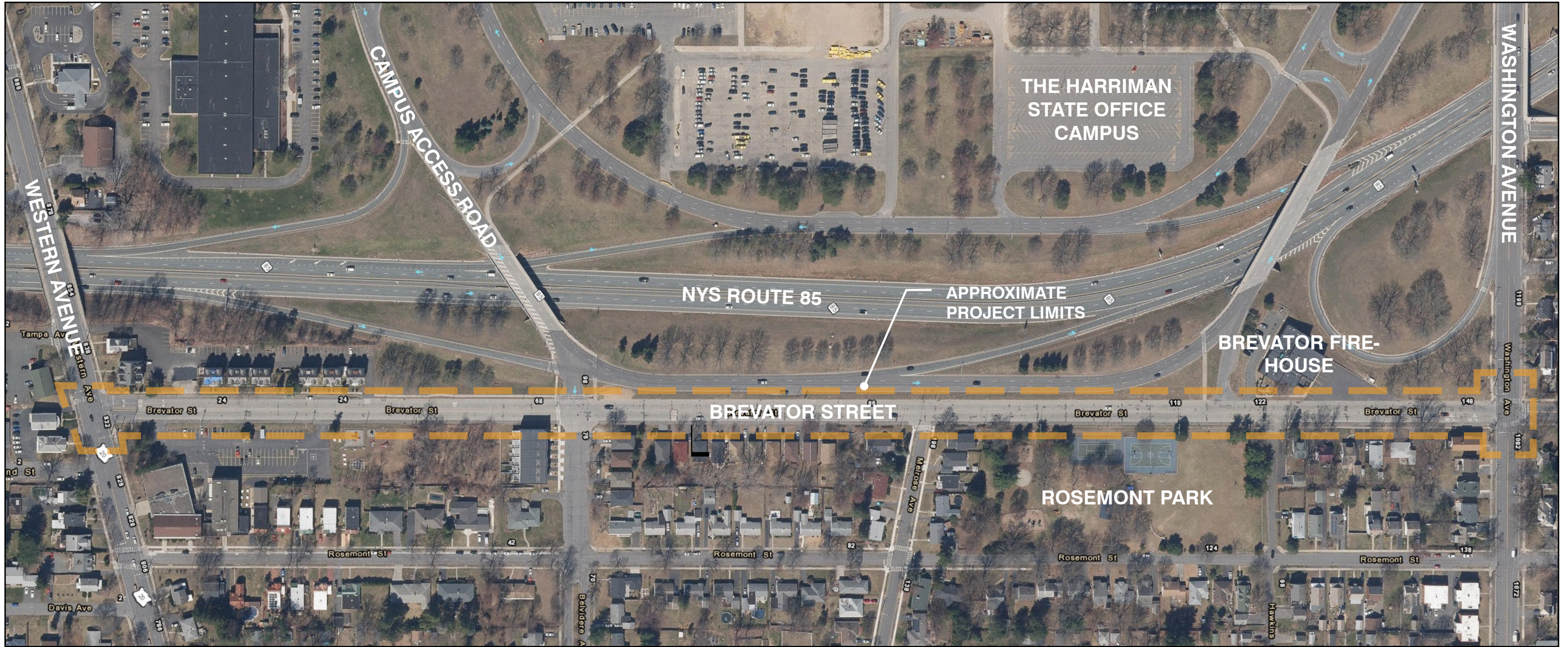
Brevator Street Reconstruction EXISTING CONDITIONS AND GOALS

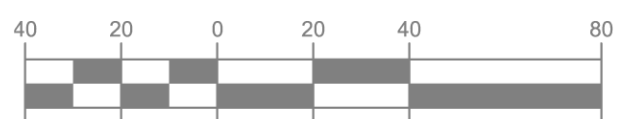
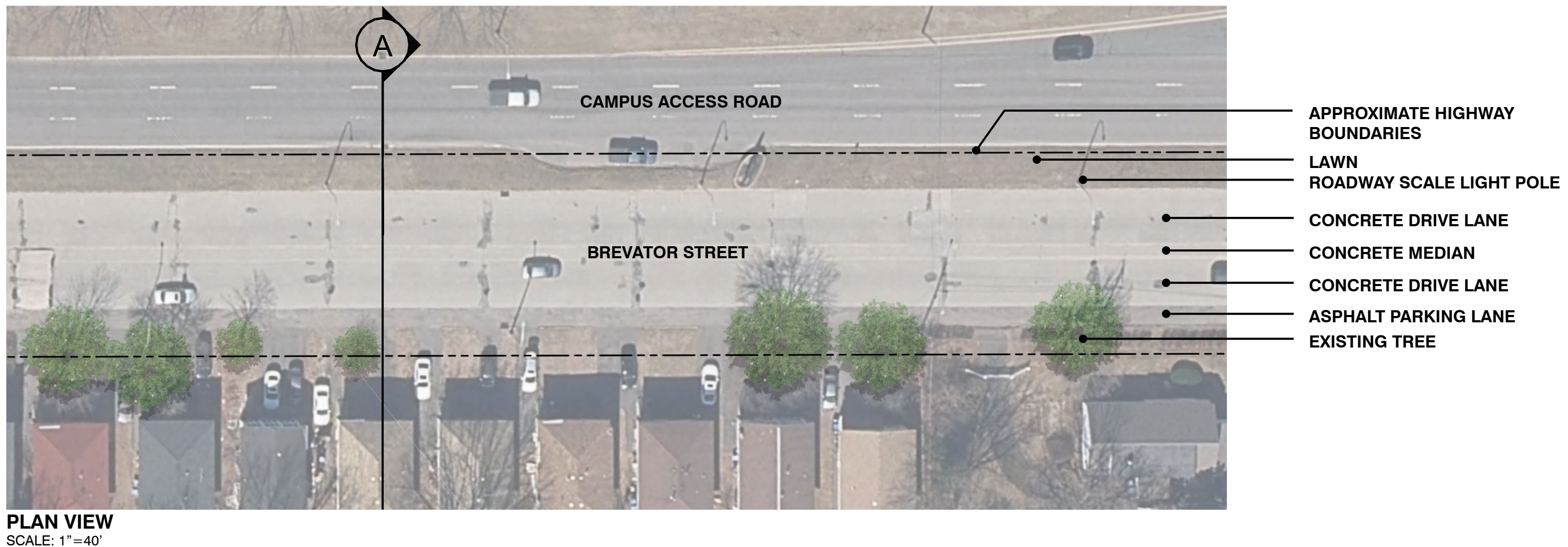
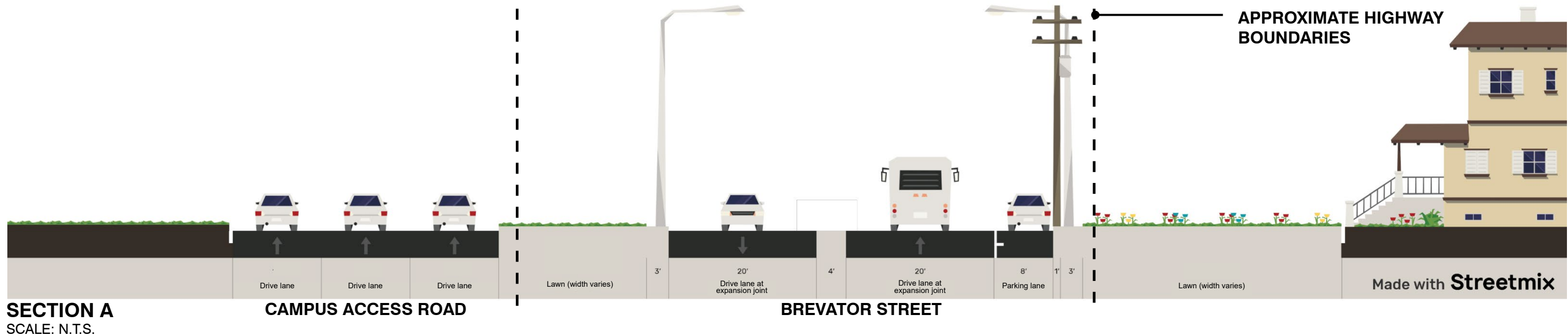
Existing Conditions:

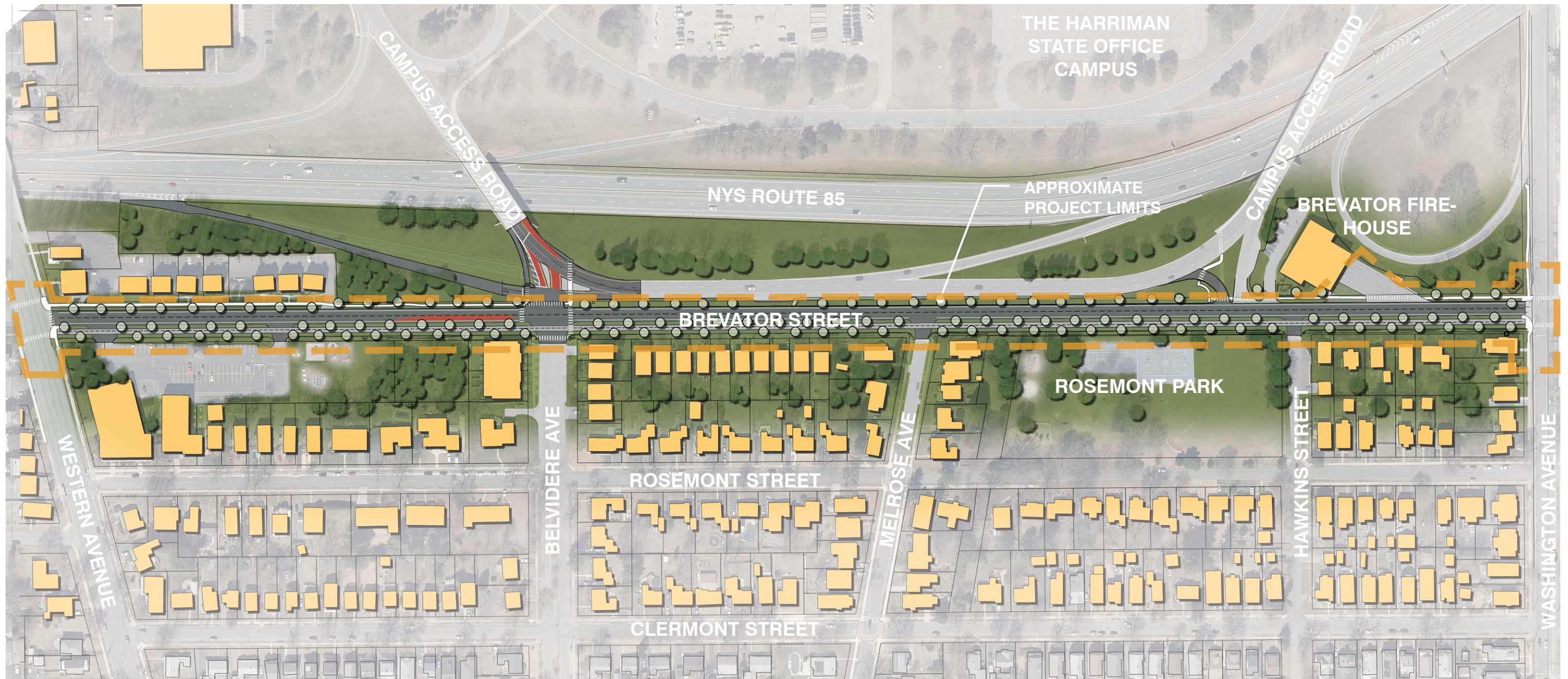
1. Wide, weathered, and deteriorated concrete roadway
2. Overbuilt roadway provides space for vehicular use but lacks multi-modal accommodations
3. Non-compliant and potentially unsafe pedestrian sidewalk ramps and crosswalks
4. Street corridor lacks vehicular and pedestrian scale signage
5. Vehicular traffic dominates overall right-of-way character
6. Roadway is prone to flooding
7. Rosemont Park lacks accessible entrance area
8. Brevator Firehouse egress is wide and does not have preferred streetscape character
9. Deficient barrier exposes residents to Route 85 traffic
10. Lack of meaningful street tree canopy contributes to urban heat island effect
11. Streetscape is illuminated by tall, cobrahead style light fixtures and lacks pedestrian scale

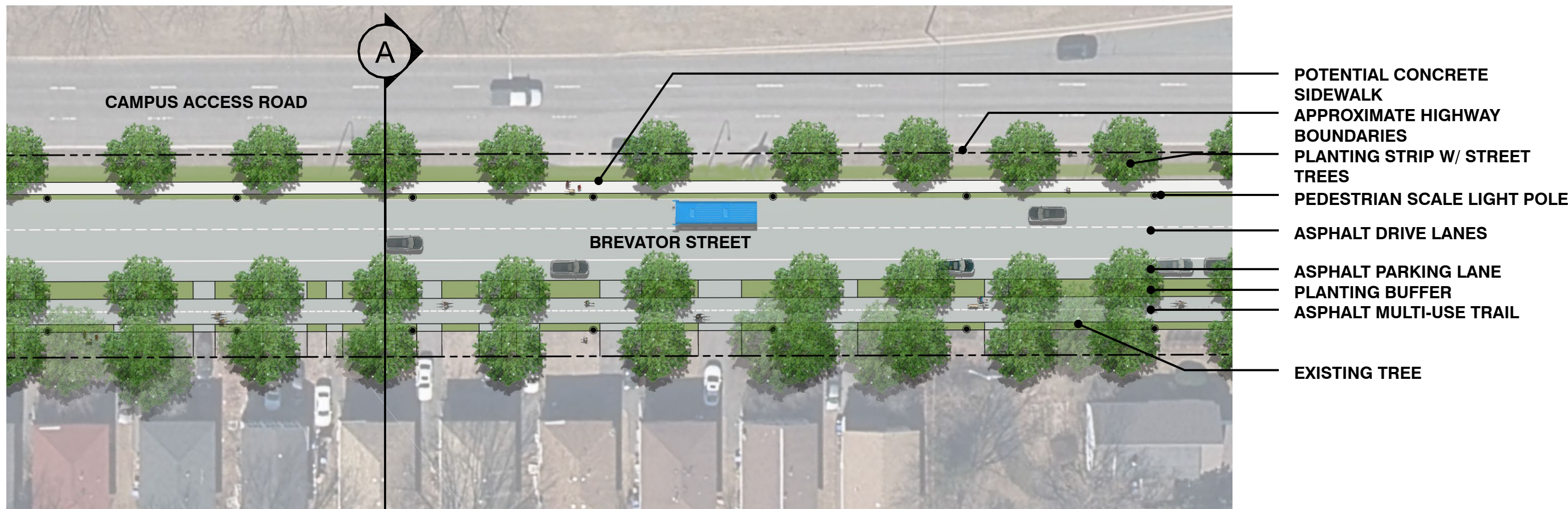
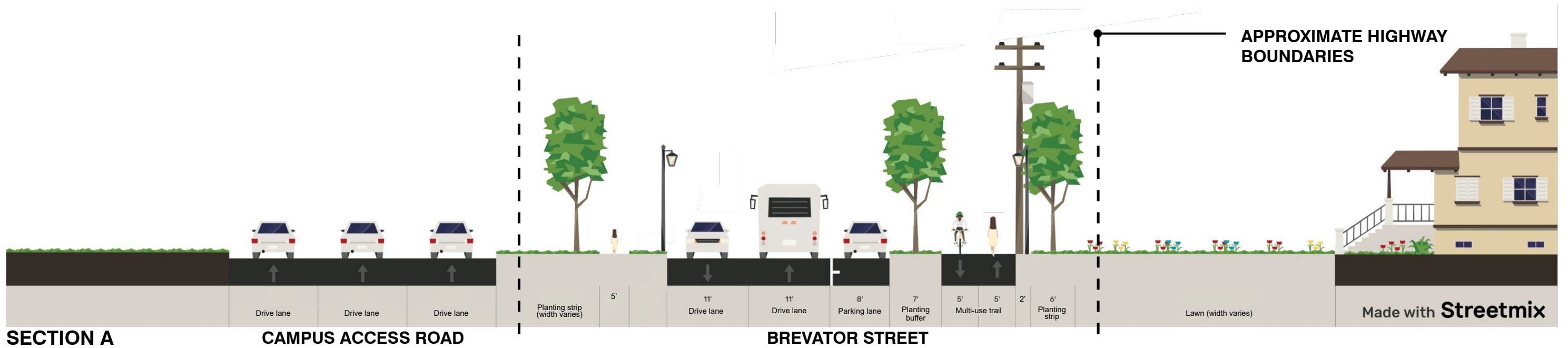
Goals:

1. Eliminate concrete drive surface and use more traditional roadway materials
2. Reduce roadway width while accommodating for mass transit, pedestrian, and bicycle circulation
3. Improve pedestrian connections by adding ADA compliant sidewalks and crosswalks
4. Install additional vehicular and pedestrian scale signage at key areas along the corridor
5. Provide drive lanes, parking, bicycle and pedestrian pathways
6. Implement green infrastructure stormwater practices
7. Improve pedestrian access to Rosemont Park entrance area
8. Strategically reduce Brevator Firehouse curb cut to improve circulation
9. Formalize streetscape amenities to provide buffer to Route 85
10. Provide pedestrian scale lighting and street trees

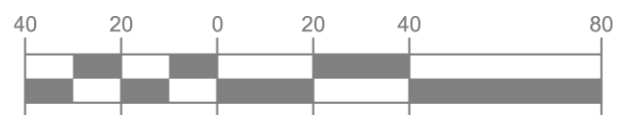


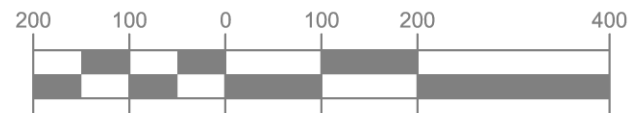
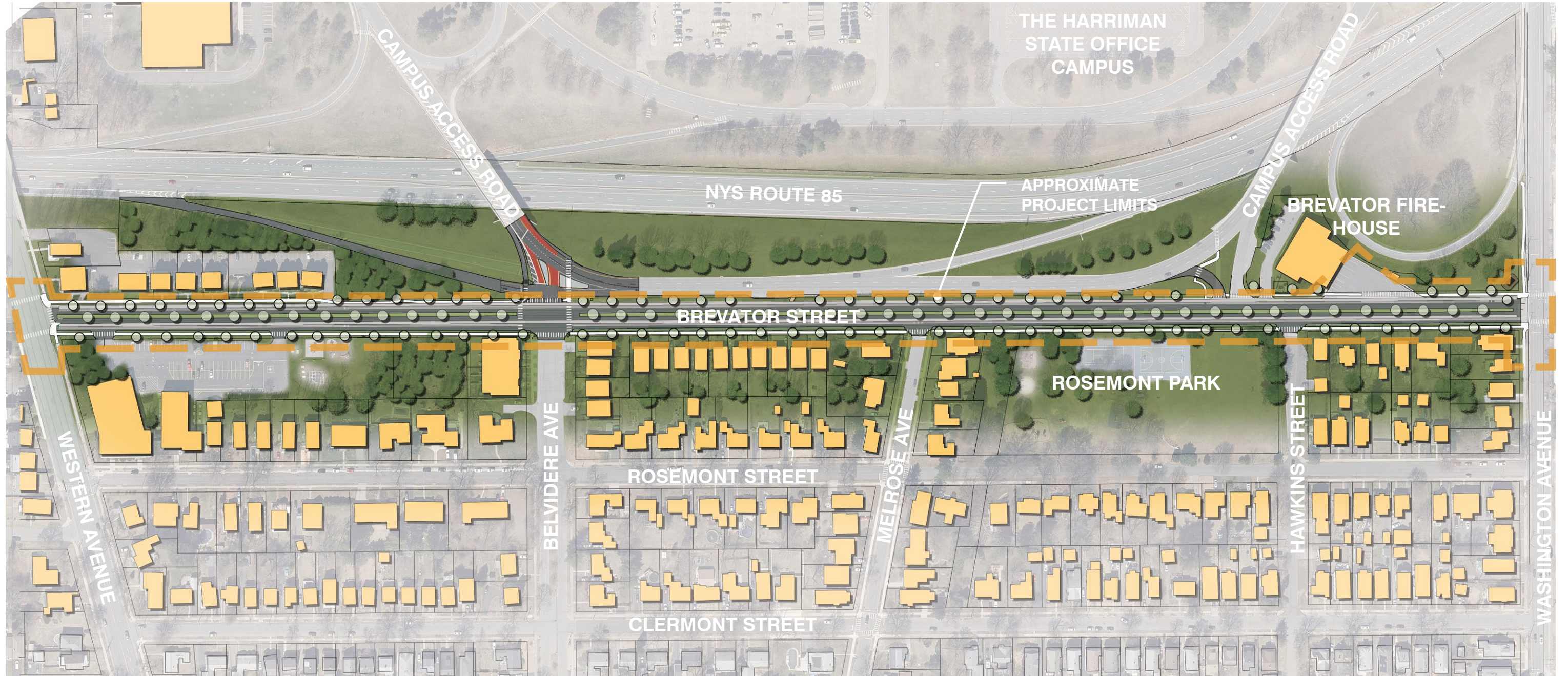


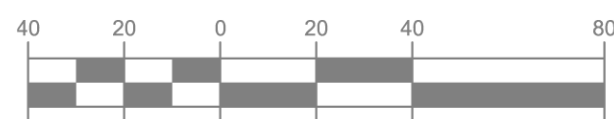
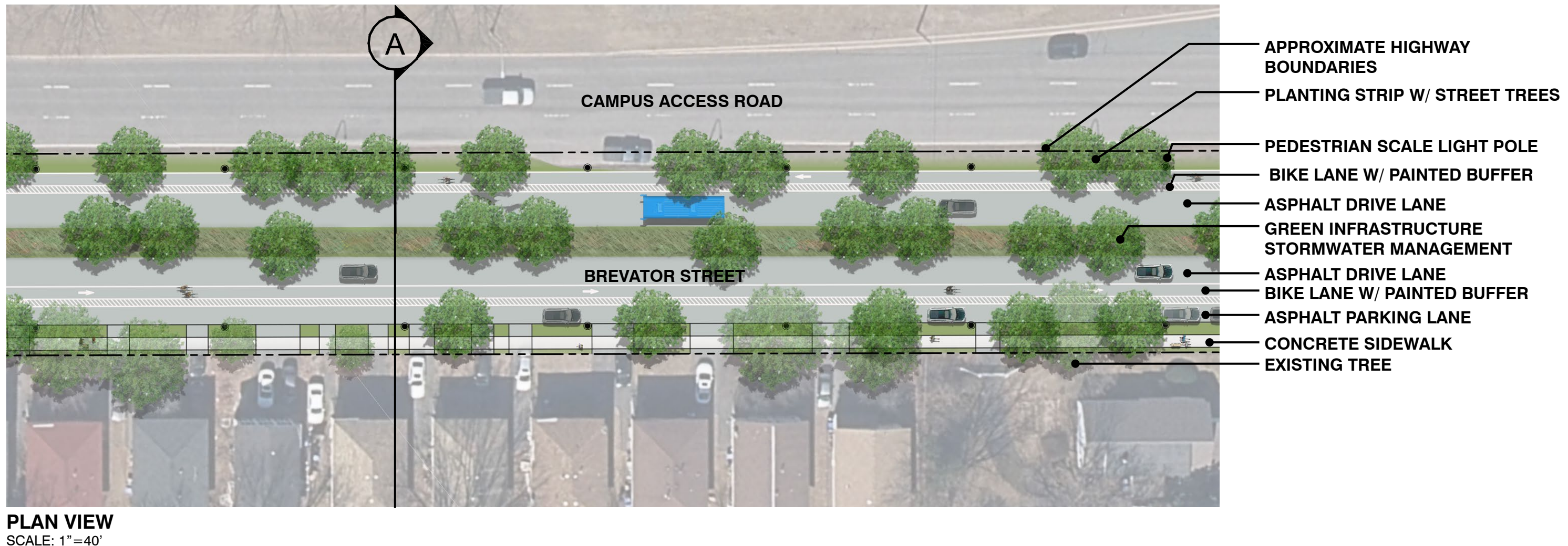
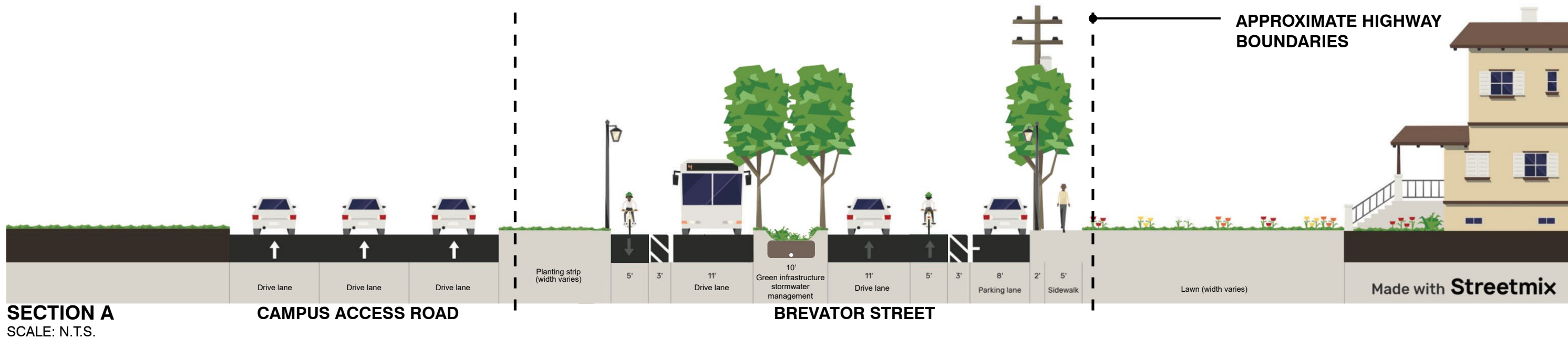




PLAN VIEW
SCALE: 1"=40'









Precedent image of Stormwater Management / Rain Garden in Watervliet, NY



View of Fairview Ave and S Main St Intersection Crosswalks



S Pearl St Crosswalks at Park and Ride Albany Rail Trail



Fairview Ave and S Main St Center Median



S Pearl St Multi-Use Trail at Park and Ride Albany Rail Trail

Weston & Sampson