

South End Connector Activate This Space



WELCOME to the 2nd Public Meeting!

6:20 pm Zoom overview

6:30 pm Meeting starts & welcome

6:40 pm Design presentation

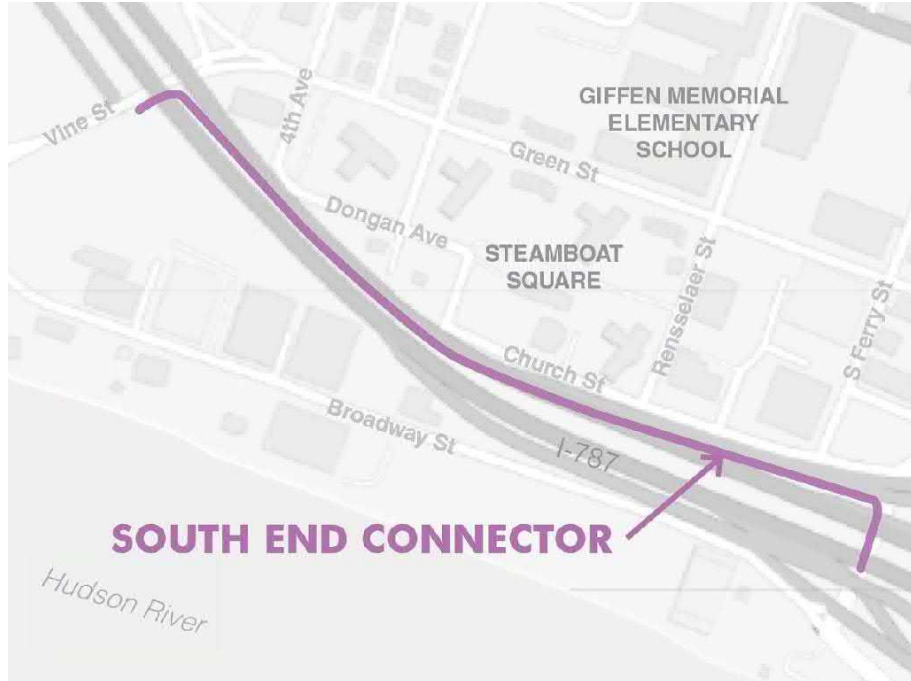
7:00 pm Small group breakout sessions

7:30 pm Report back

7:45 pm Adjourn

Meeting Purpose

Discuss initial design ideas to **activate the South End Connector**, a new shared-use trail below I-787 in the South End.



Who We Are: The Project Team

City of Albany:

The Department of Planning and Development

Yasmine Robinson

Lauren Alpert

Creighton Manning Engineering, Albany NY

Tony Christian

Landing Studio, Somerville MA

Marie Law Adams (leading presentation tonight)

Dan Adams (listening in)

Ryan Gagnebin (Q&A, managing the chat)

Gavin Zeitz (Managing breakouts & report back)



South End Connector Activate This Space



Tonight's Agenda

1. Project overview (20 minutes)
 - What we heard
 - Preliminary design ideas
 - Questions & answers
2. Small group breakout sessions (30 minutes)
 - What is liked, what is missing, priorities
3. Report back (15 minutes)

Overall Project Schedule



We are here!

**Community
Engagement**
Fall 2020



**Design
Development**
Winter 2020-21



Permits/Bidding
Spring 2021
(TBD)



Construction
Summer 2021
(TBD)

Visit the project website for a copy of this presentation & updates:
southendconnector.weebly.com

Community Engagement Schedule



We are here!

Public Meeting 1 September 22

Goals

- Gather initial impressions and ideas



Public Meeting 2 November 10

Goals

- Present design options based on initial ideas
- Gather feedback (what is liked, what is disliked and/or missing)



Public Meeting 3 December (date TBD)

Goals

- Present 1 design based on feedback
- Gather feedback to refine a final design



SOUTH END CONNECTOR

Hudson River

Broadway

Church St

Broadway

S Ferry St

Rensselaer St

STEAMBOAT
SQUARE
HOMES

Cherry St

Dongan Ave

Bassett St

Green St

GIFFEN MEMORIAL
ELEMENTARY
SCHOOL

4th Ave

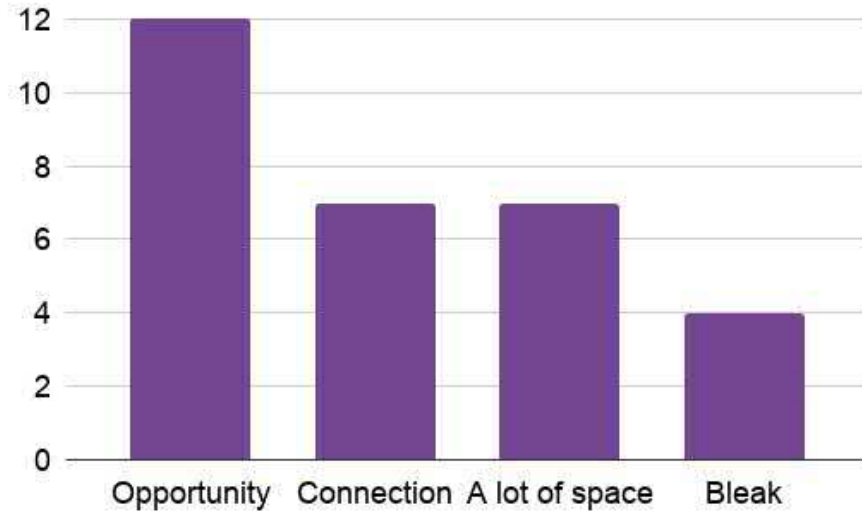
Pearl St

Vine/Church St

I-787

What we heard – existing impressions

One word I would use to describe this place is _____.



"it's an opportunity
waiting to happen"

"flowing"

"network"

"wide-open"

"unfinished"

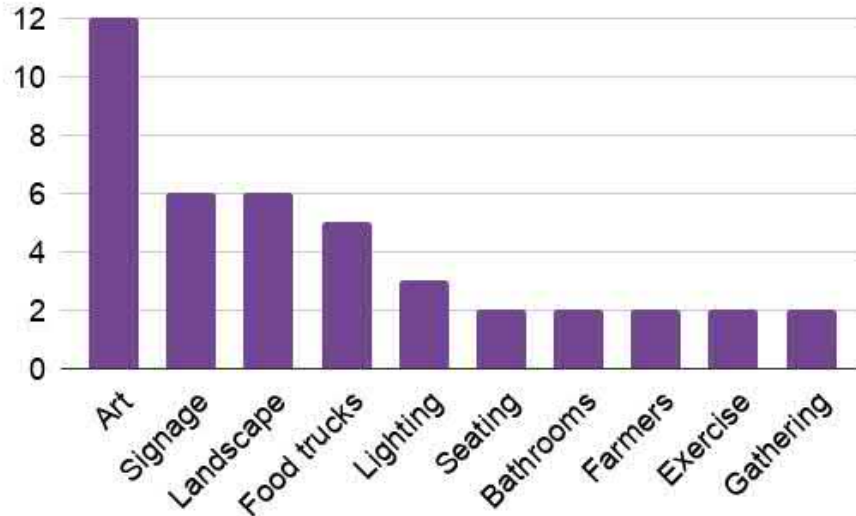
"a canvas"

"gray"

"challenging"

What we heard – future vision, things

What would you be excited to see at the South End Connector?



“meeting and gathering space”

“bike amenities, racks”

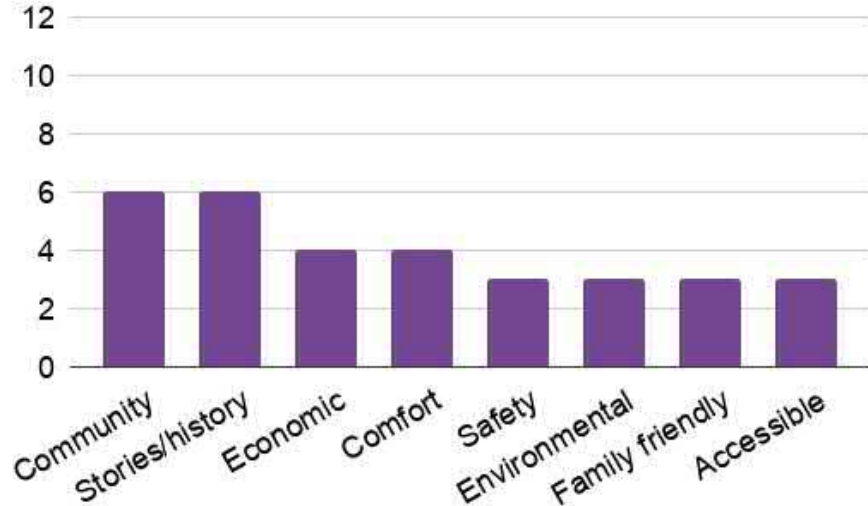
“litter control”

“skate park”

“climbing wall”

What we heard – future vision, themes

What would you be excited to see at the South End Connector?



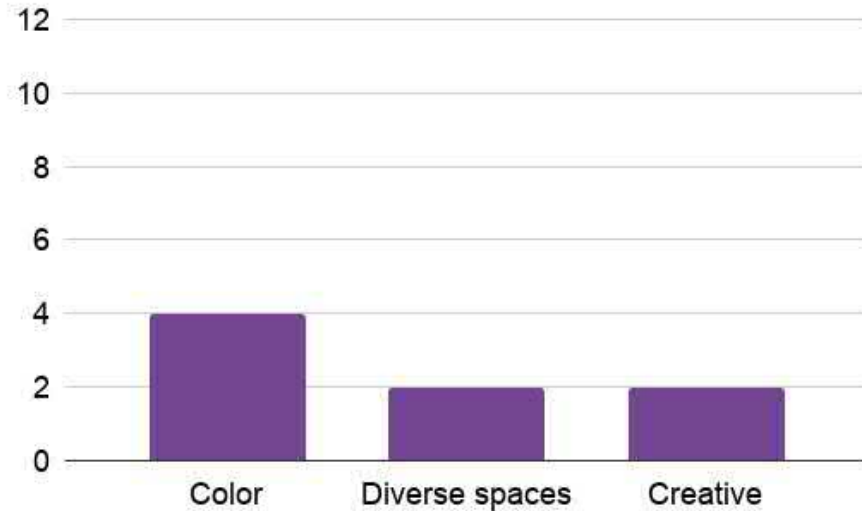
"tell BIPOC stories and history"

"create opportunities for people to start their business"

"history of the South End"

What we heard – future vision, qualities

What would you be excited to see at the South End Connector?



"playful and fun"

"inviting"

"feel safe to pass through"

"emphasize the gateways into the space"

"family atmosphere"

What we heard – Design Goals

Reflect Community

The space should reflect the local South End community and their stories.

Gathering Space

Create spaces for gathering and events, especially those that support neighborhood economic development and family activities.

Vibrant

The design should bring color into the space.

Safe and Connected

The space should be easy and safe to get to.

Green

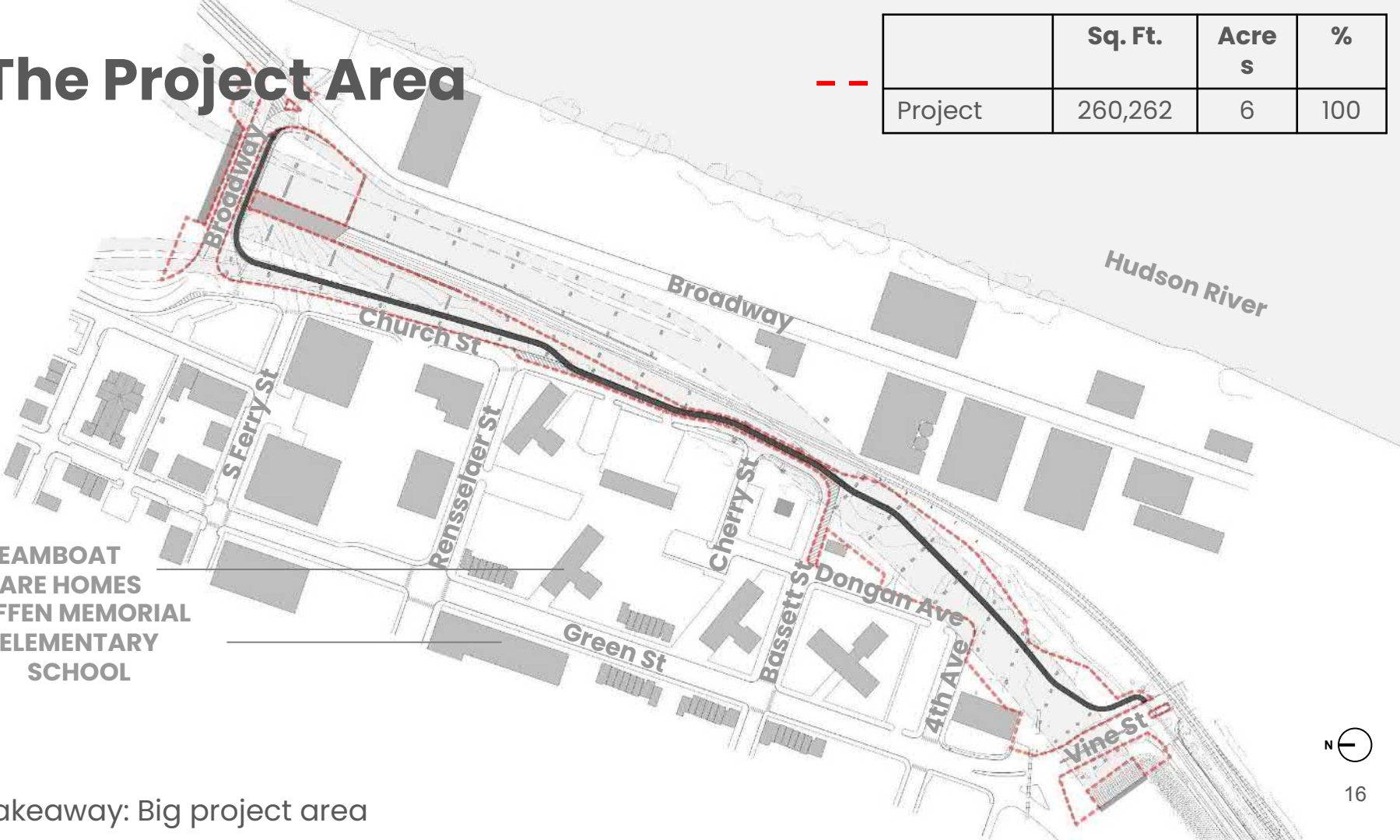
Landscape to bring color and softness, stormwater management and air quality.

The Project Area

	Sq. Ft.	Acre s	%
Project	260,262	6	100

STEAMBOAT
SQUARE HOMES
GIFFEN MEMORIAL
ELEMENTARY
SCHOOL

Takeaway: Big project area



Paved vs Unpaved



	Sq. Ft.	Acres	%
Project	260,262	6	100
Paved	40,216	0.9	15
Unpaved	220,646	5.1	85

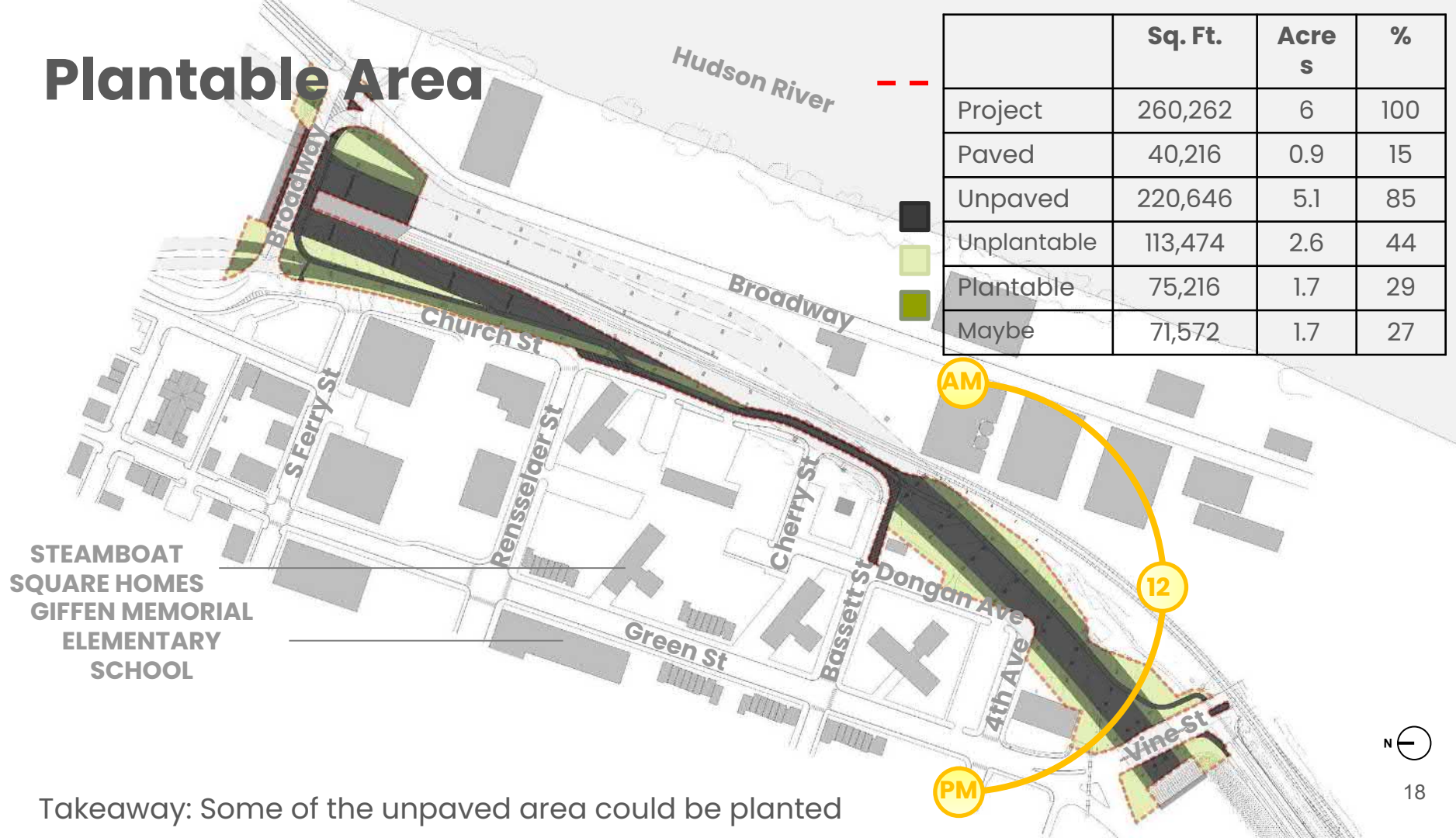


STEAMBOAT
SQUARE HOMES
GIFFEN MEMORIAL
ELEMENTARY
SCHOOL

Takeaway: Lots of unpaved area



Plantable Area



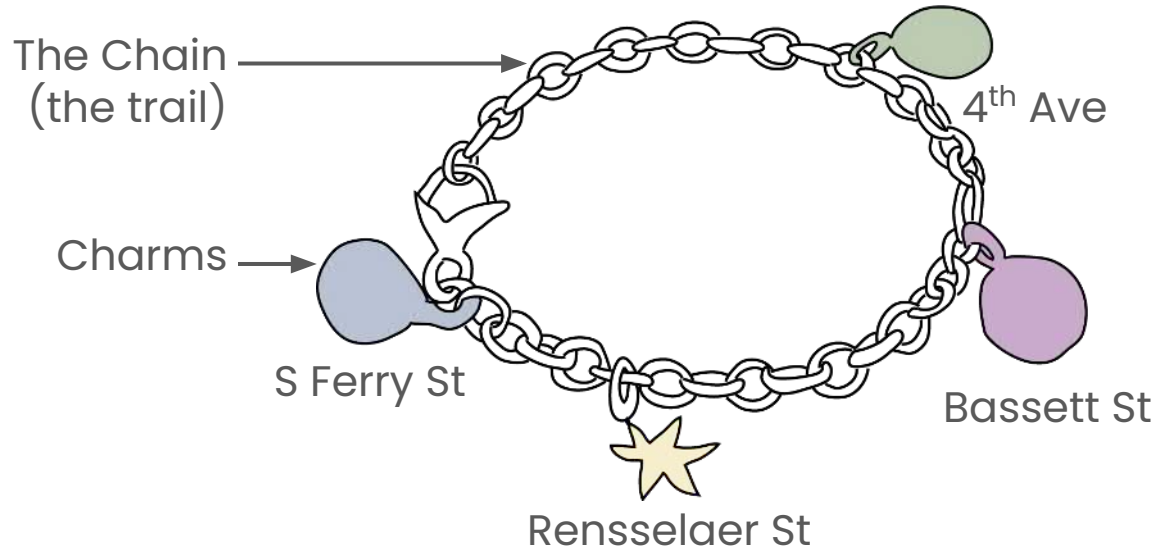
Neighborhood Connectivity



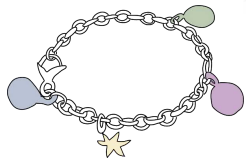
Takeaway: The South End neighborhood sidewalks could be better connected to the trail



Charm Bracelet analogy

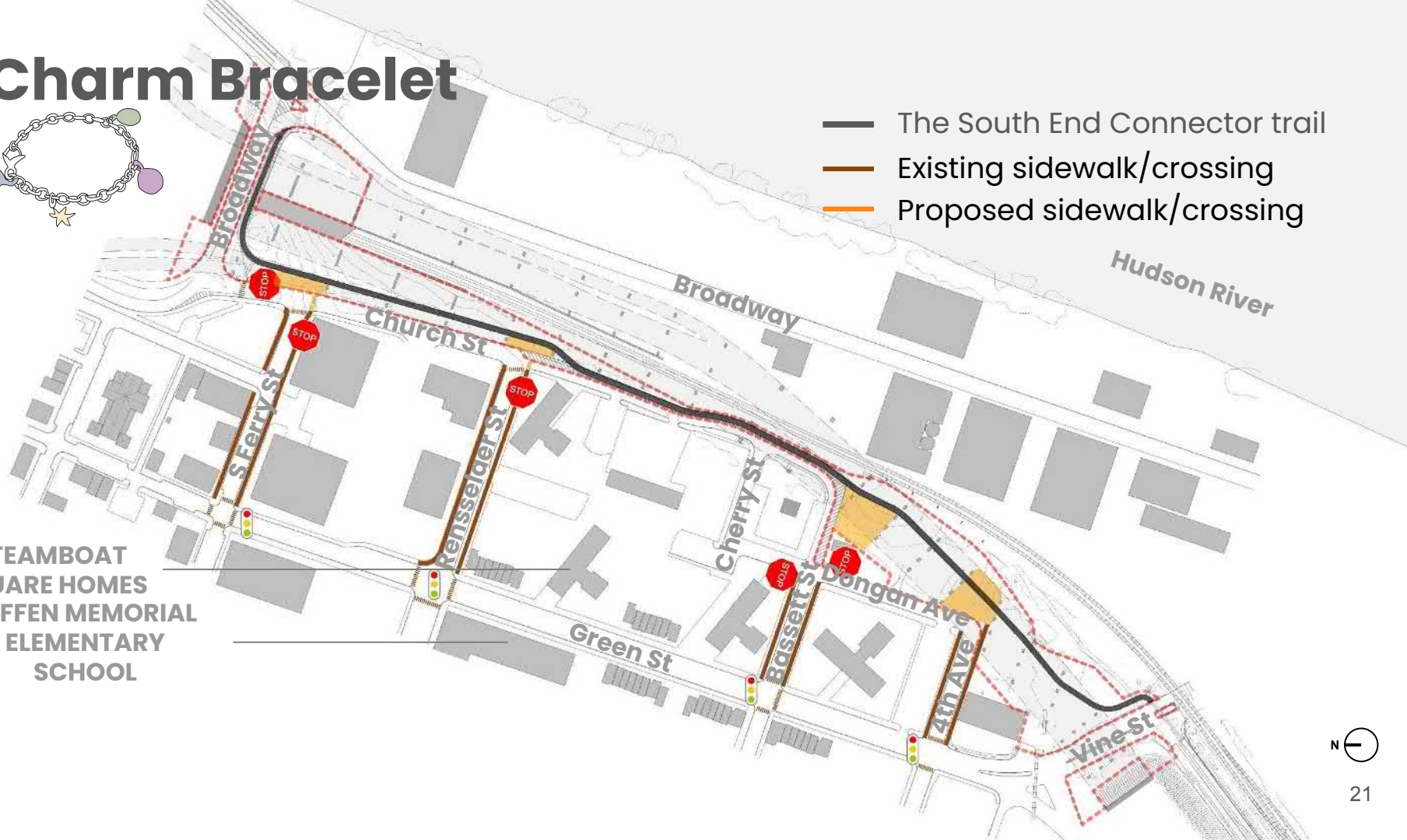


Charm Bracelet



- The South End Connector trail
- Existing sidewalk/crossing
- Proposed sidewalk/crossing

STEAMBOAT
SQUARE HOMES
GIFFEN MEMORIAL
ELEMENTARY
SCHOOL



Kit of Parts

Charm Parts:

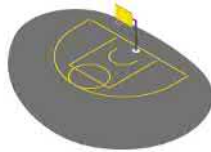
Public plaza



Furniture



Recreation area



Planted area



Crosswalk



Pathway connection



Chain Parts:

Ornamental lighting



Wayfinding graphics



Ground painting



Wayfinding & community signage



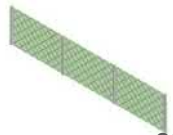
Mural art



Stone surfacing



Fencing windscreen



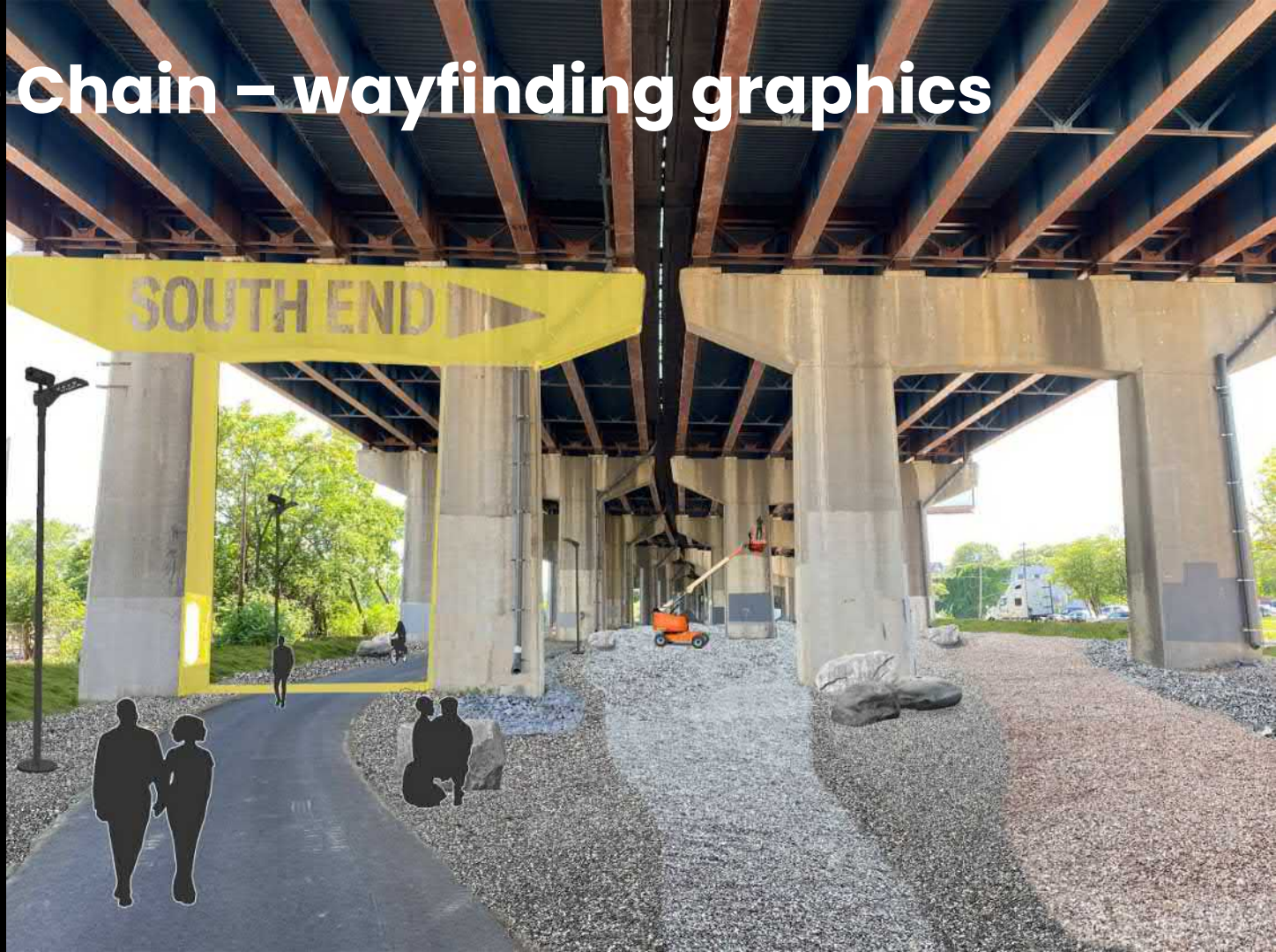
The Chain – existing



The Chain – stone surfacing



The Chain – wayfinding graphics



Mural graphic credit: Nina Chanel Abney, 2019

The Chain – mural art



Mural graphic credit: Nina Chanel Abney, 2019

The Chain – mural art



Mural graphic credit: Nina Chanel Abney, 2019

The Chain – mural art



Mural graphic credit: Nina Chanel Abney, 2019

The Chain – mural art



S Ferry St Charm – existing



S Ferry St Charm – paving & landscape



S Ferry St Charm – trees



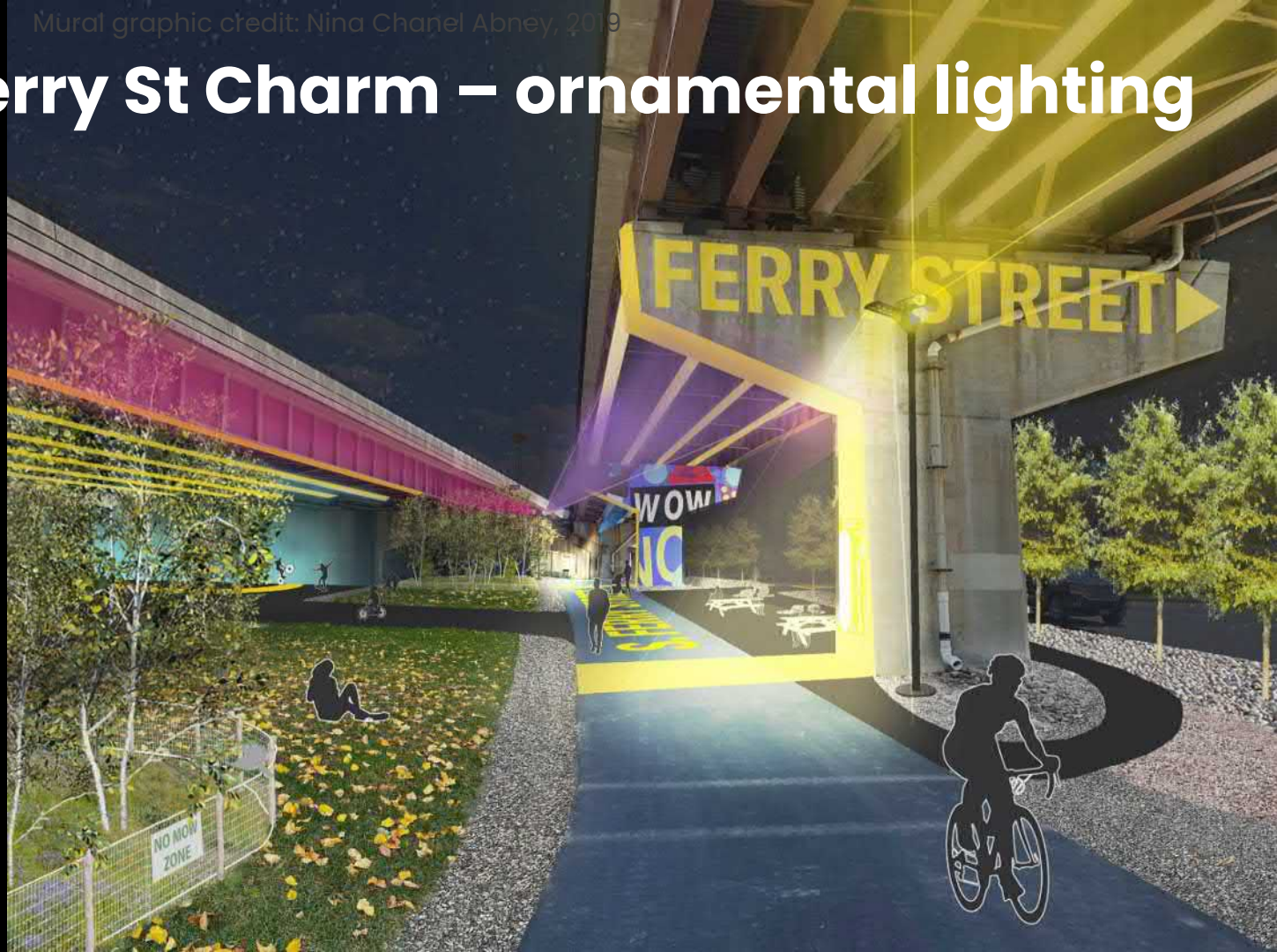
S Ferry St Charm – wayfinding graphics



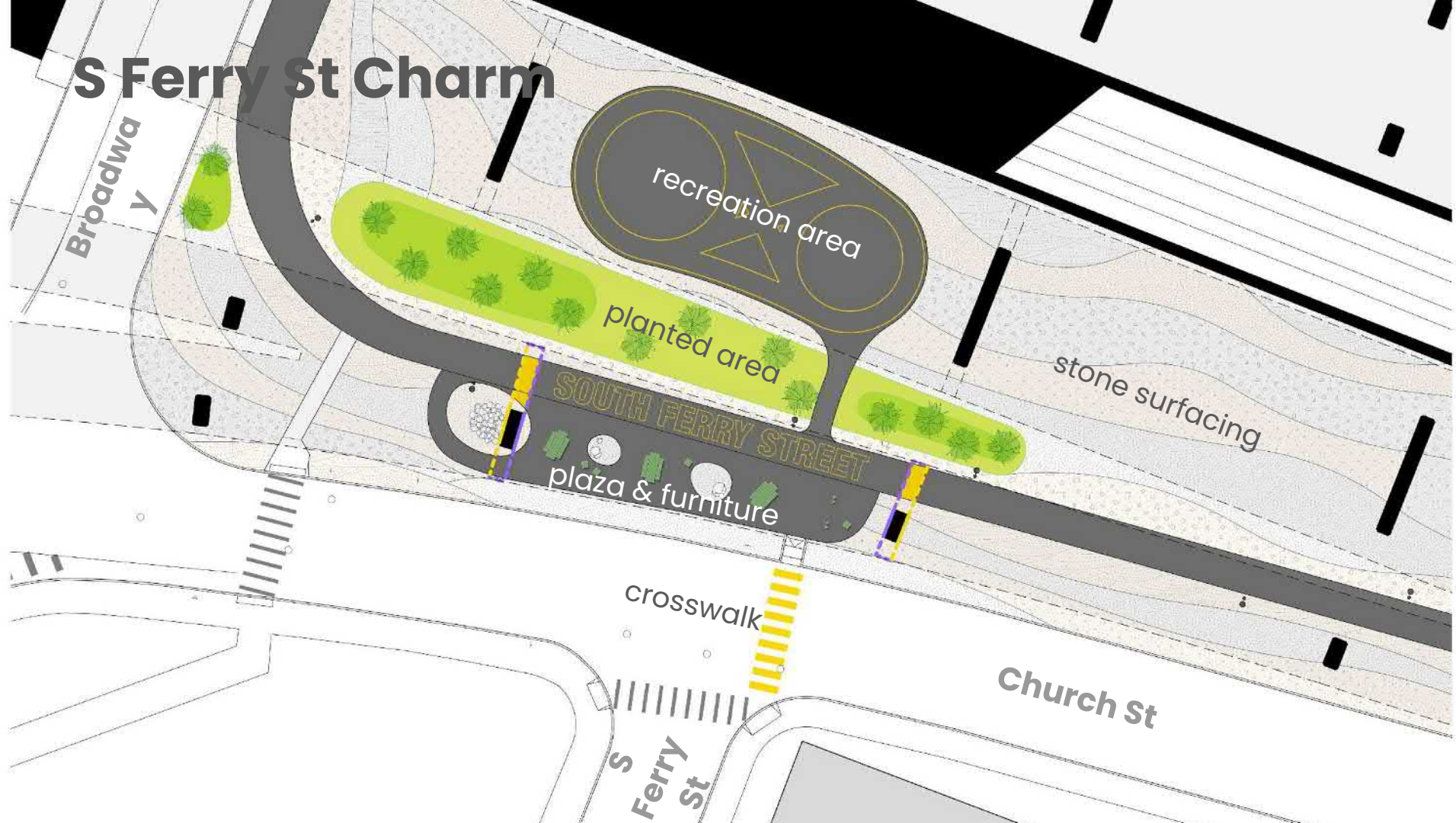
S Ferry St Charm – mural art



S Ferry St Charm – ornamental lighting



S Ferry St Charm



Rensselaer St Charm - existing



Rensselaer St Charm – public plaza

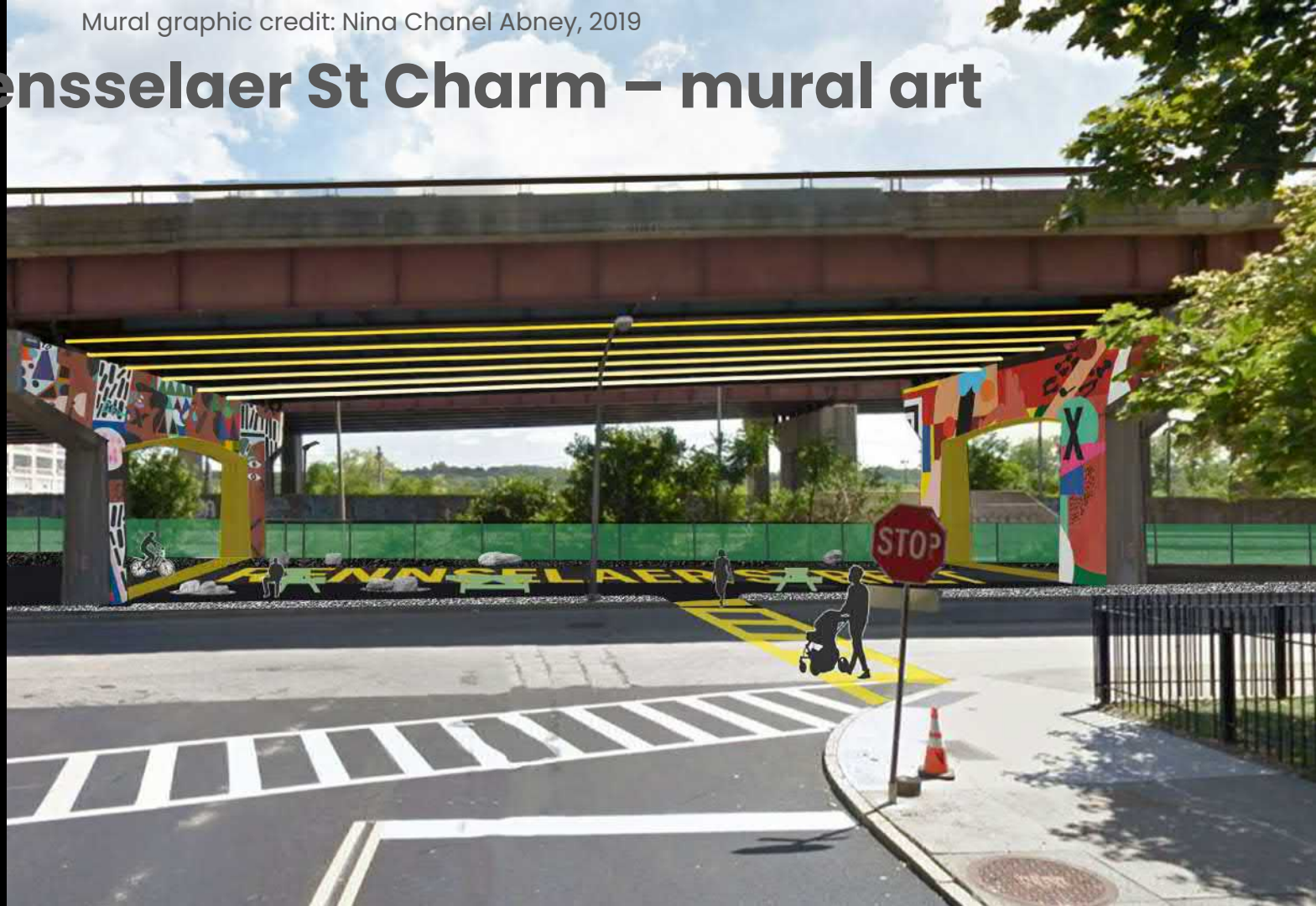


Rensselaer St Charm – wayfinding graphics & crosswalk



Mural graphic credit: Nina Chanel Abney, 2019

Rensselaer St Charm – mural art



Rensselaer St Charm



Bassett St Charm



4th Ave Charm

Dongan Ave

4th Avenue

plaza with furniture & food truck parking

stone surfacing

fencing windscreen

South End Connector Activate This Space

Questions?



South End Connector Activate This Space



Breakout Session Questions

1. (3-4 minutes) Introduce yourself (name, and where you live) and share one thing you like to do when you're relaxing.
2. (5-7 minutes) What do you like about what you see? Why?
3. (5-7 minutes) What is missing? Why?
4. (5-7 minutes) What are your highest priorities for this project?
(Name up to 3 things)

In the last 5 minutes: Choose one person to **report back a 2-minute summary of highlights** to the whole group.

South End Connector Activate This Space



Report back

Two-minute summary of highlights from each group's conversation.

Thank you and stay tuned!

Stay tuned for news about the **next meeting**, where we will share a single design based on **what we heard** during today's meeting.



Public Meeting 1
September 22



Public Meeting 2
November 10



Public Meeting 3
(date TBD)

Visit the project website for updates:
southendconnector.weebly.com

Email any comments or questions to:
dpd@albanyny.gov