

# South End Connector Activate This Space



## **WELCOME to the 1<sup>st</sup> Public Meeting!**

6:20 pm Zoom overview

6:30 pm Meeting starts & welcome

6:40 pm Project overview (Team, project area, brainstorming ideas, timeline)

7:00 pm Small group breakout sessions (Initial impressions)

7:30 pm Report back

7:45 pm Adjourn

# Meeting Purpose

Brainstorm and share ideas to **activate the South End Connector**, a new shared-use trail below I-787 in the South End.



# Who We Are: The Project Team

## **City of Albany: The Department of Planning and Development**

Yasmine Robinson

Lauren Alpert

## **Creighton Manning Engineering, Albany NY**

Tony Christian

## **Landing Studio, Somerville MA**

Marie Law Adams (leading presentation tonight)

Dan Adams (listening in)

Ryan Gagnebin (Q&A, managing the chat)

Gavin Zeitz (Managing breakout sessions, report back)

# Who We Are



Creighton Manning–  
South End Connector Phase I



# Who We Are



Landing Studio – past work  
Under I-93 in Boston BEFORE

# Who We Are

Landing Studio – past work  
Under I-93 in Boston AFTER



# Who We Are



Landing Studio – past work  
PORT Park in Chelsea, MA BEFORE



# Who We Are

Landing Studio – past work  
PORT Park in Chelsea, MA AFTER





# Who We Are



Landing Studio – past work  
PORT Park in Chelsea, MA AFTER



# Who We Are



Landing Studio – past work  
PORT Park in Chelsea, MA AFTER



# Who We Are



Landing Studio – past work  
Bridge lighting examples



# South End Connector

## Activate This Space



### **Tonight's Agenda**

1. Project overview (20 minutes)
  - Project Schedule
  - Project area / initial observations & brainstorming
  - Questions & Answers
2. Small group breakout sessions (30 minutes)
  - Initial impressions & brainstorming
3. Report back (15 minutes)



# Overall Project Schedule

**We are here!**

**Community  
Engagement**  
Fall 2020



**Design  
Development**  
Winter 2020-21



**Permits/Bidding**  
Spring 2021  
(TBD)



**Construction**  
Summer 2021  
(TBD)

Visit the project website for a copy of this presentation & updates:  
[southendconnector.weebly.com](https://southendconnector.weebly.com)

# Community Engagement Schedule

**We are here!**

## **Public Meeting 1** September 22

### Goals

- Gather initial impressions and ideas

## **Public Meeting 2** October (date TBD)

### Goals

- Present 2-3 design options based on initial ideas
- Gather feedback (what is liked, what is disliked and/or missing)

## **Public Meeting 3** November (date TBD)

### Goals

- Present 1 design based on feedback
- Gather feedback to refine a final design



# The Project Area



**SOUTH END CONNECTOR**

Hudson River

Broadway

Church St

S Ferry St

Rensselaer St

STEAMBOAT  
SQUARE  
HOMES

Cherry St

Dongan Ave

Bassett St

Green St

GIFFEN MEMORIAL  
ELEMENTARY  
SCHOOL

Pearl St

4th Ave

Vine/Church St  
I-787



# The Project Area





# The Project Area





# The Project Area





# The Project Area





# The Project Area





# The Project Area



Gateway – Vine/Church St.



# The Project Area



Gateway – Broadway



# The Project Area

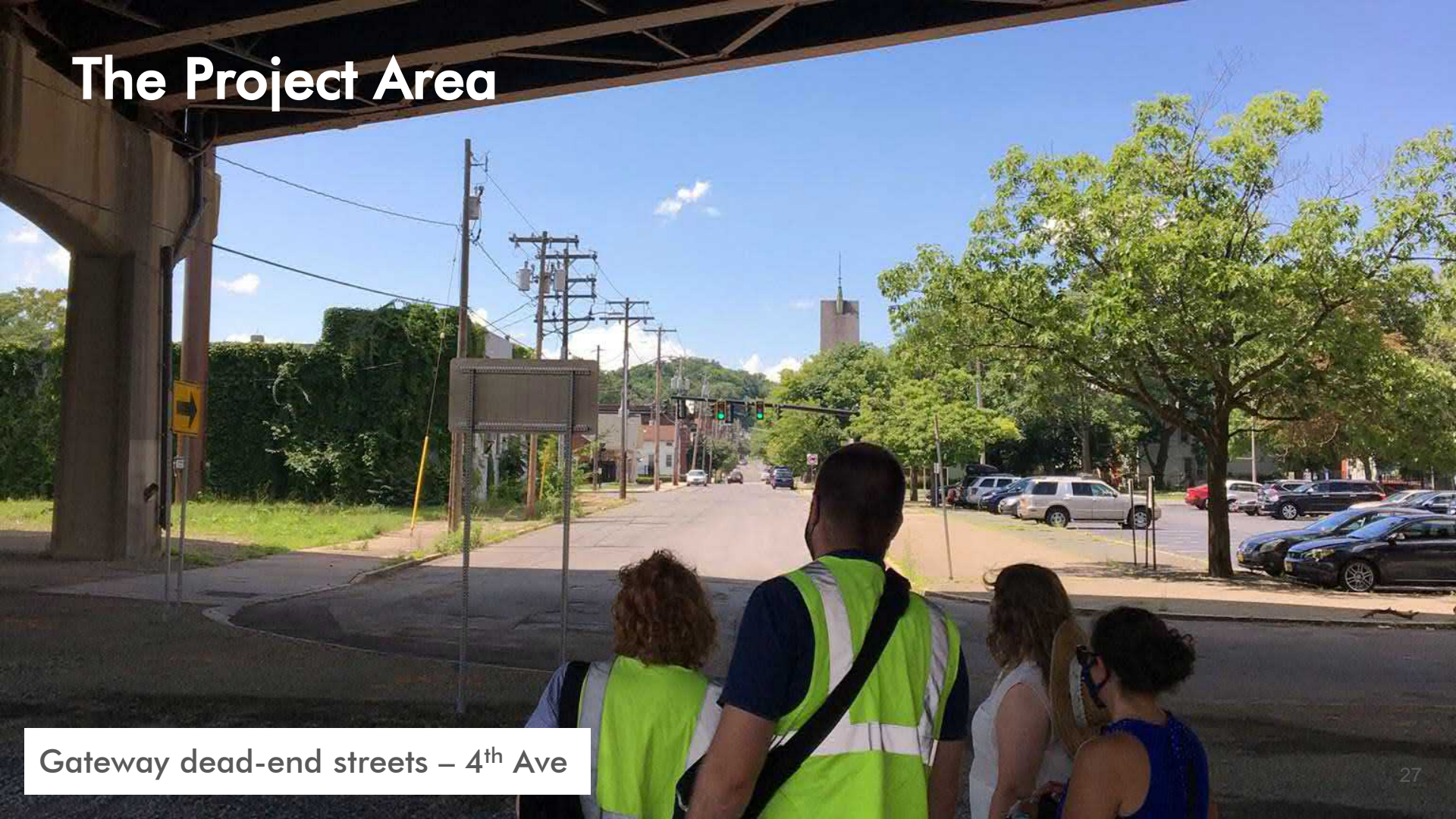


Gateways – Through & dead-end streets



# The Project Area

Gateway dead-end streets – 4<sup>th</sup> Ave





# Brainstorming Ideas



Wayfinding / Directional Signage





# The Project Area



Lighting – new light post bases (lights not yet installed)



# The Project Area



Lighting – Existing street lights & new light post bases



# Brainstorming Ideas

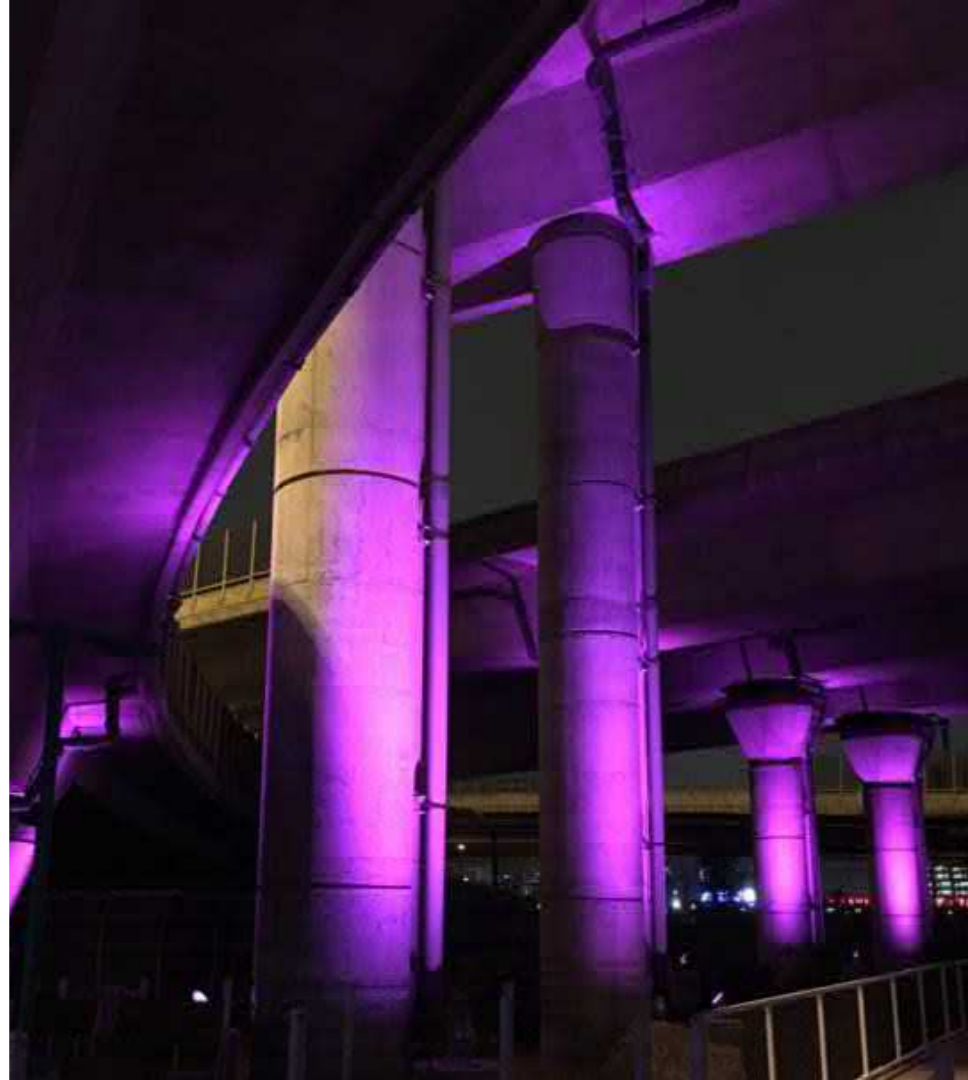
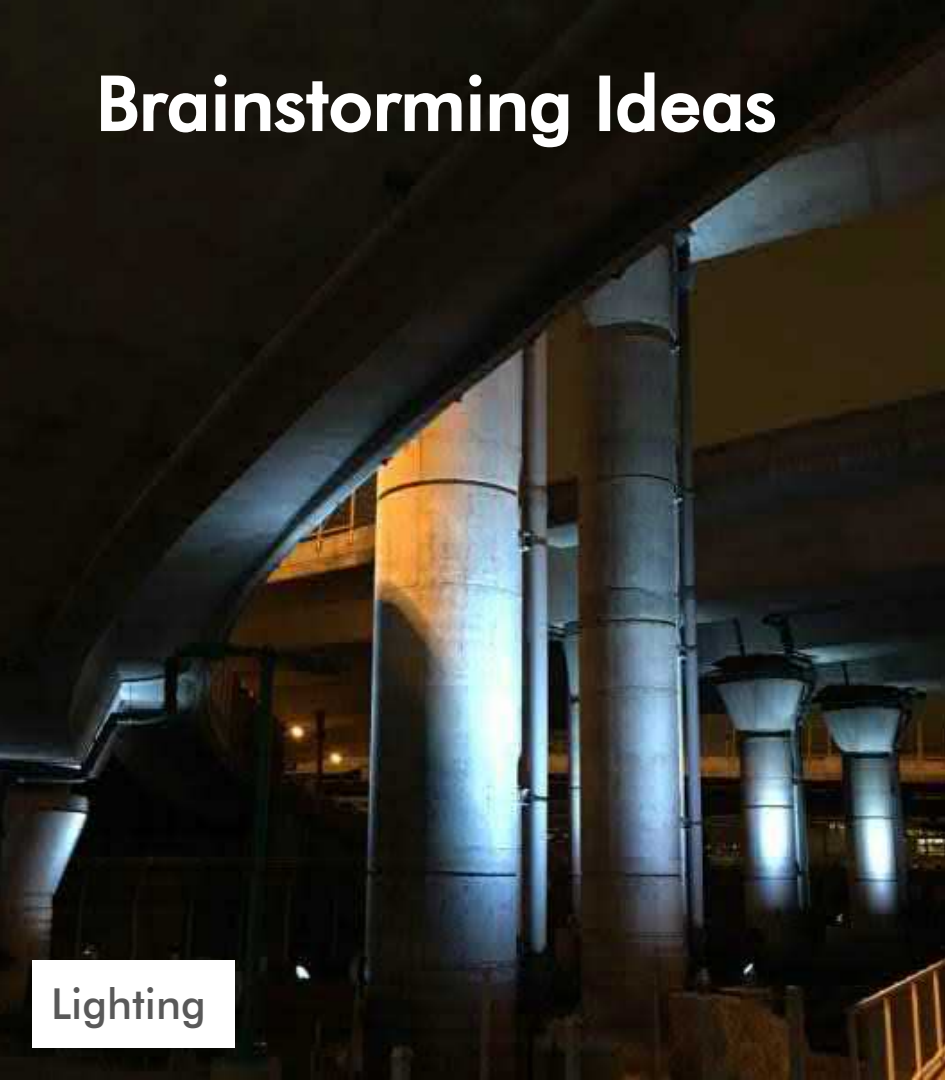
Lighting





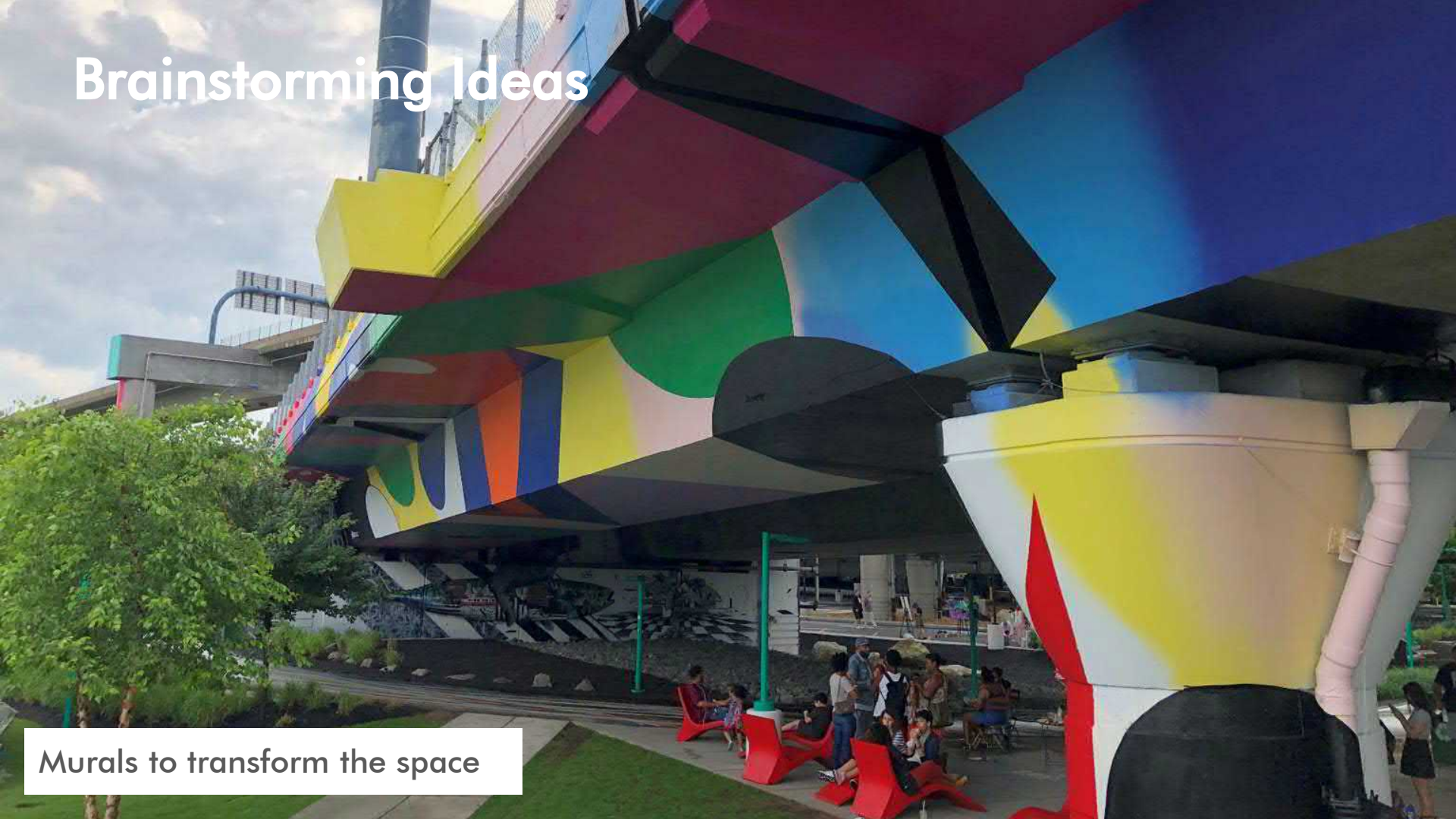
# Brainstorming Ideas

Lighting



# Brainstorming Ideas

Murals to transform the space





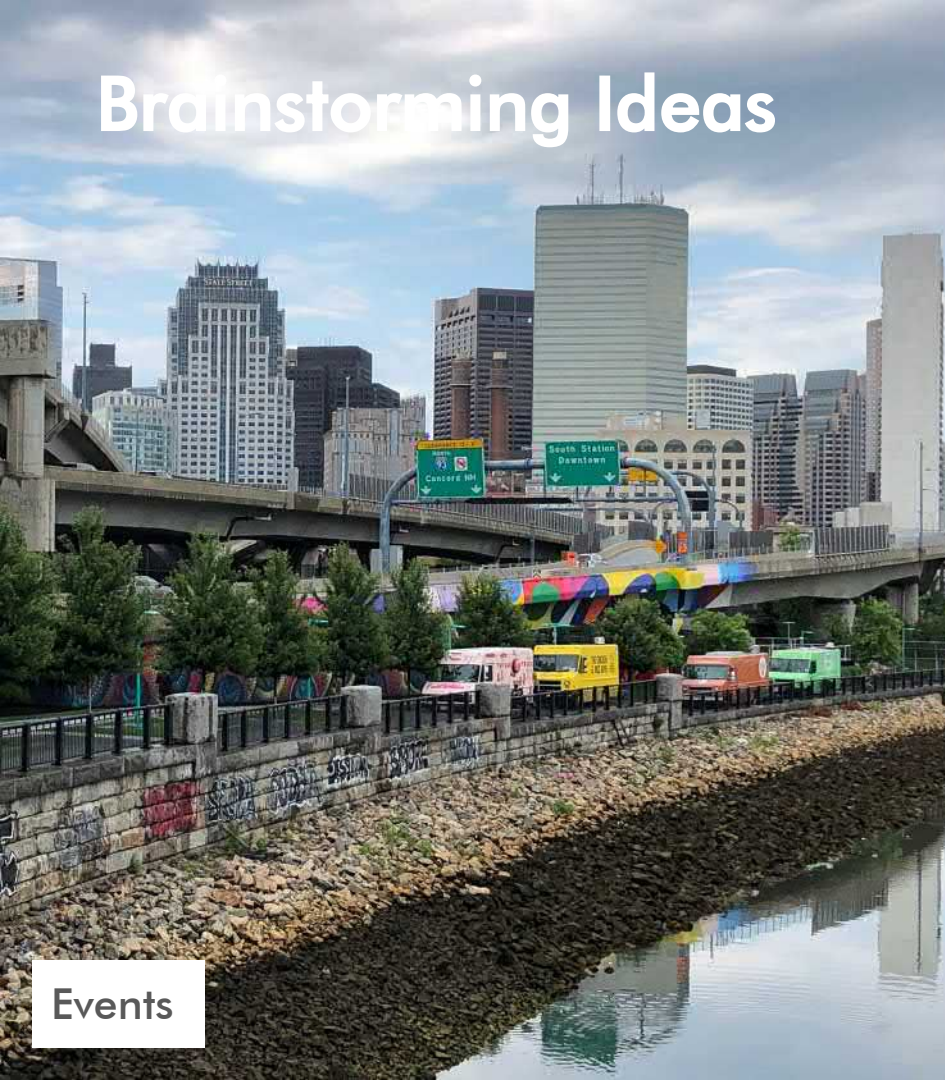
# Brainstorming Ideas



Artwork that reflects local stories and the community (Source: David Fichter, mural artist)



# Brainstorming Ideas



Events





# The Project Area



Fencing

# The Project Area



Fencing – Current fence location





# The Project Area

Fencing





# Brainstorming Ideas

Fence screening (right: Flickr)





# The Project Area



Drainage – problem areas with ponding



# The Project Area



Drainage – SEC Phase I improvements



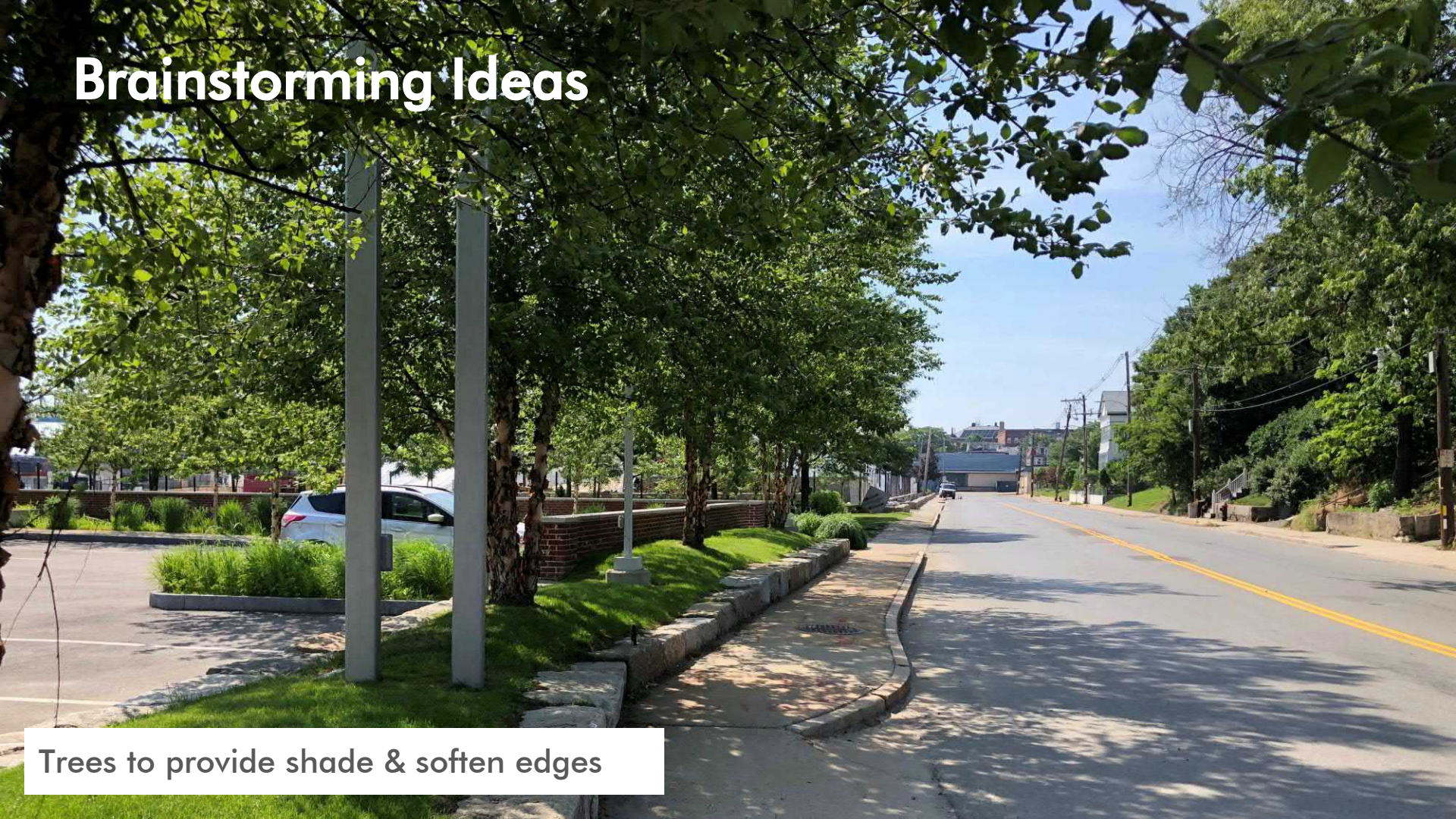
# Brainstorming Ideas



Green stormwater infrastructure - Plants, trees, stone



# Brainstorming Ideas



Trees to provide shade & soften edges



# Overall Project Schedule

**We are here!**

**Community  
Engagement**  
Fall 2020



**Design  
Development**  
Winter 2020-21



**Permits/Bidding**  
Spring 2021  
(TBD)



**Construction**  
Summer 2021  
(TBD)

Visit the project website for a copy of this presentation & updates:  
[southendconnector.weebly.com](https://southendconnector.weebly.com)

# Community Engagement Schedule

**We are here!**

## **Public Meeting 1** September 22

### Goals

- Gather initial impressions and ideas

## **Public Meeting 2** October (date TBD)

### Goals

- Present 2-3 design options based on initial ideas
- Gather feedback (what is liked, what is disliked and/or missing)

## **Public Meeting 3** November (date TBD)

### Goals

- Present 1 design based on feedback
- Gather feedback to refine a final design



# South End Connector Activate This Space



## Breakout Session Questions

1. (5 minutes) Introduce yourself (name, and where you live) and share one reason why you're here tonight.
2. (10 minutes) Complete this sentence: One word I would use to describe this place is \_\_\_\_\_.
3. (10 minutes) What would you be excited to see at the South End Connector?

*In the last 5 minutes, decide:* What is **one exciting or important idea** that your group would like to share?

# South End Connector **Activate This Space**



## Questions?



# South End Connector Activate This Space



## Report back

What is **one exciting or important idea** that your group would like to share?

# Thank you and stay tuned!

Stay tuned for news about the **next meeting** in October, where we will share **what we heard** during today's meeting and preliminary design options for the space.

## Public Meeting 1

September 22



## Public Meeting 2

October  
(date TBD)



## Public Meeting 3

November  
(date TBD)

Other upcoming events:

- October 3 Bike Rodeo at the South End Connector
- October 10 Steamboat Square Community Site Walk
- October 27 South End Connector Neighborhood Meeting

Visit the project website for updates: [southendconnector.weebly.com](http://southendconnector.weebly.com)

Email any comments or questions to: [dpd@albanyny.gov](mailto:dpd@albanyny.gov)