



City of Albany

South End Connector

Linking Albany's

Multi-Use Trails



Public Information Meeting
November 13, 2018

This document was prepared with funding provided by the New York State Department of State under Title 11 of the Environmental Protection Fund.

Agenda

- Project History
- Project Limits
- Design Alternatives
- Q&A

Project History

- Waterfront Feasibility Study (2017)
 - Funded by the Capital District Transportation Committee Linkage Grant
 - Input Sources
 - Multiple Public Meetings
 - Project Website
 - Stakeholder Engagement
 - Analyzed different routes/treatments
 - Selected route



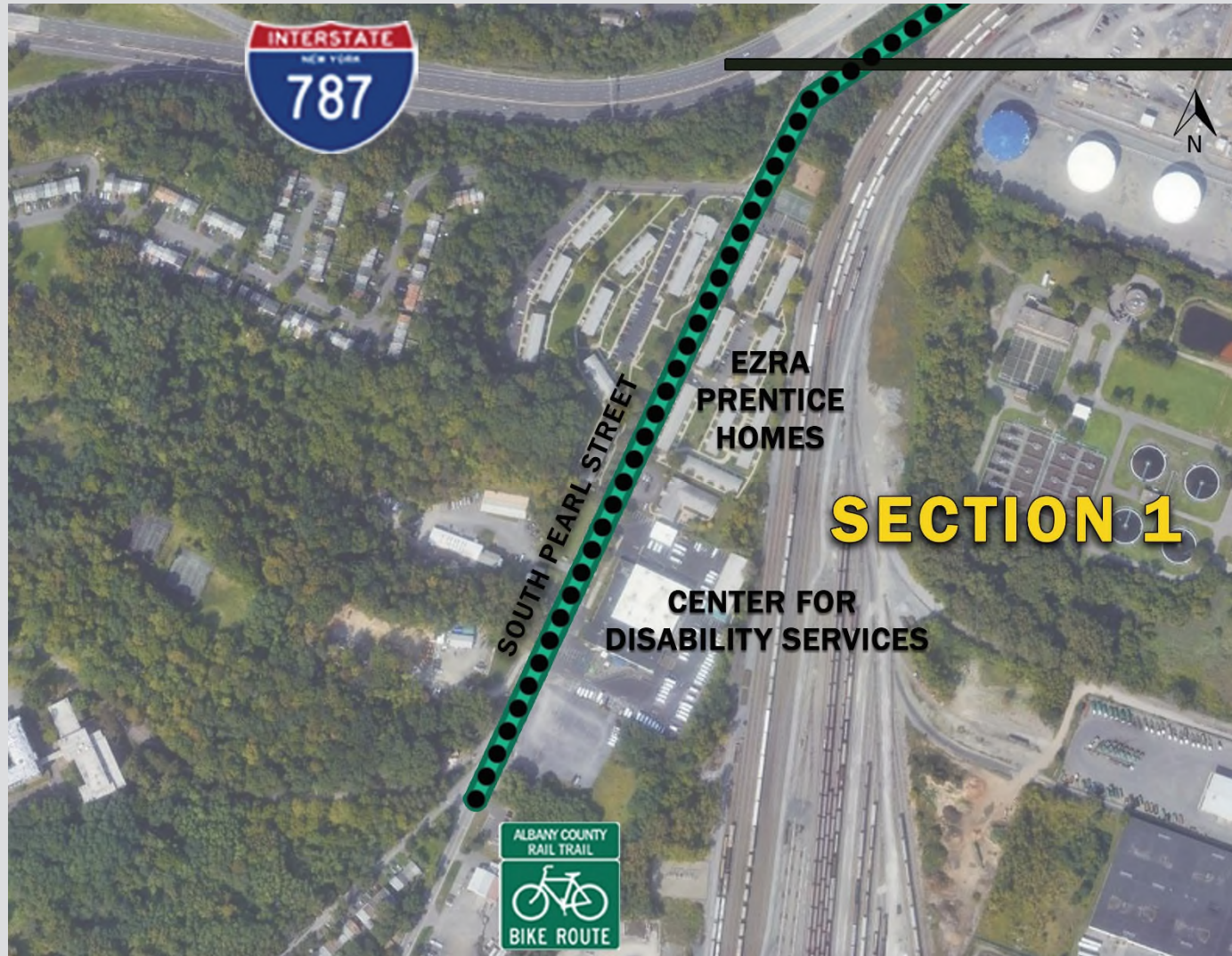
Waterfront Feasibility Study



Project Limits



Section 1 – South Pearl Street

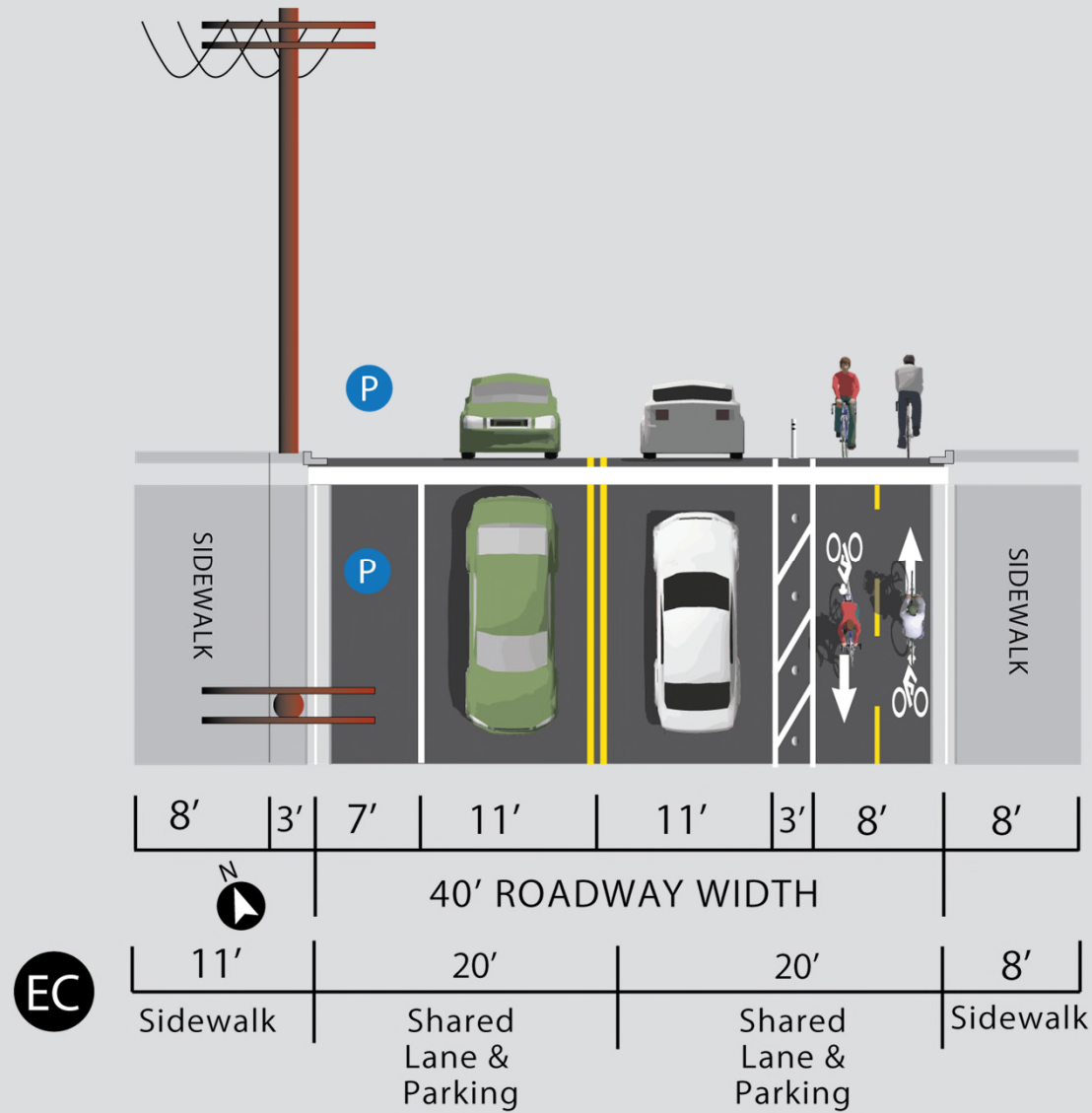


Section 1 – Existing Conditions



South Pearl St

Section 1 – South Pearl Street



Section 1 – Rumble Strips



Section 1 – Flexible Delineators



Section 1 – CDTA Transit Stops



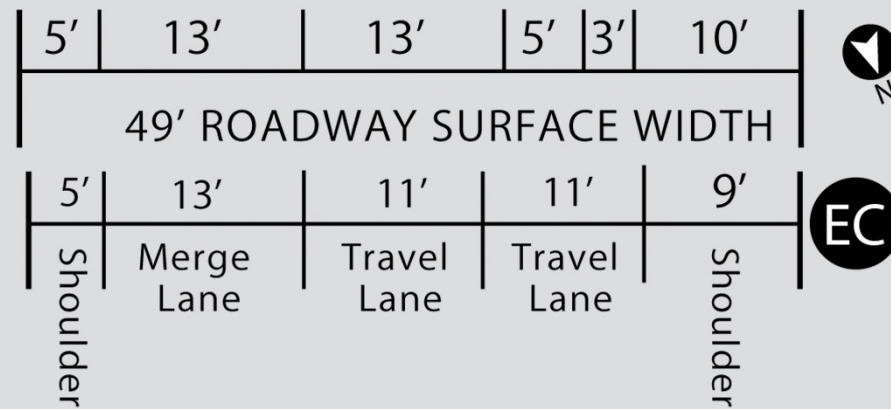
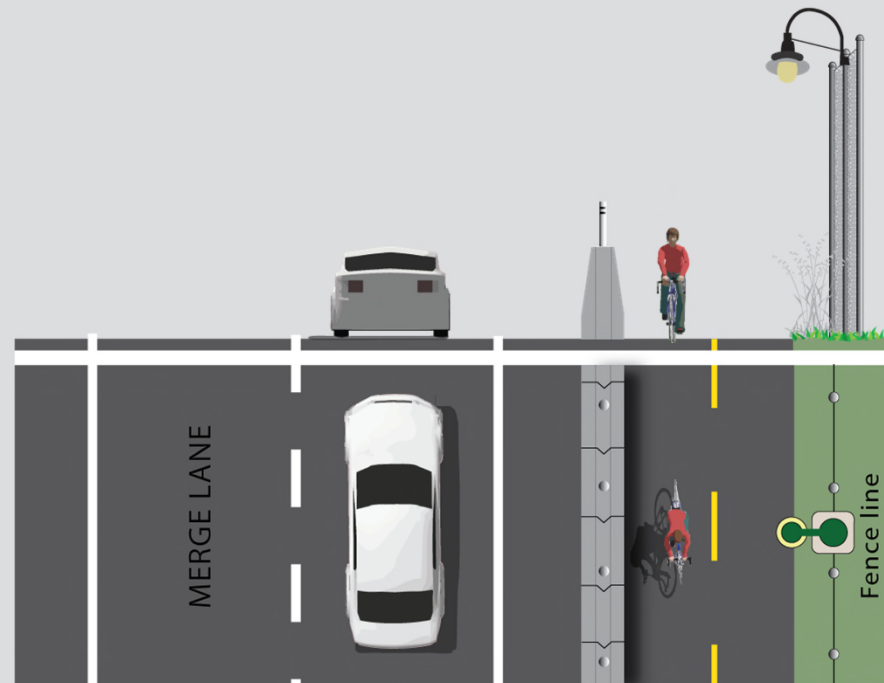
Section 2 – Frontage Road (I-787 Ramp)



Section 2 – Existing Conditions



Section 2 – Frontage Road



Frontage Road (I-787 Ramp) – Concrete Barrier



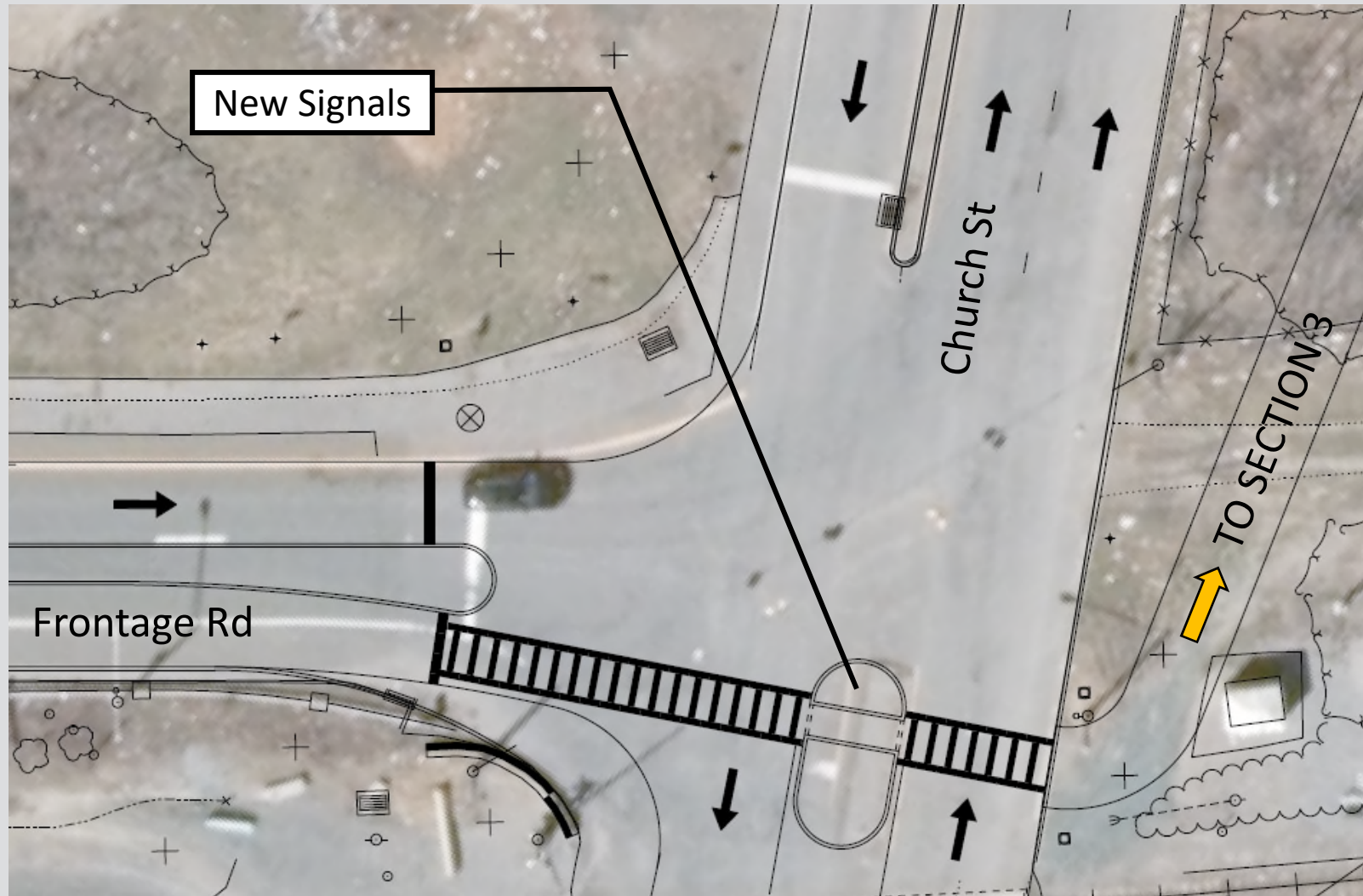
Frontage Road (I-787 Ramp) – Landscaped Median



Section 2 – Frontage Road (I-787 Ramp)



Section 2/3 – Church Street Intersection



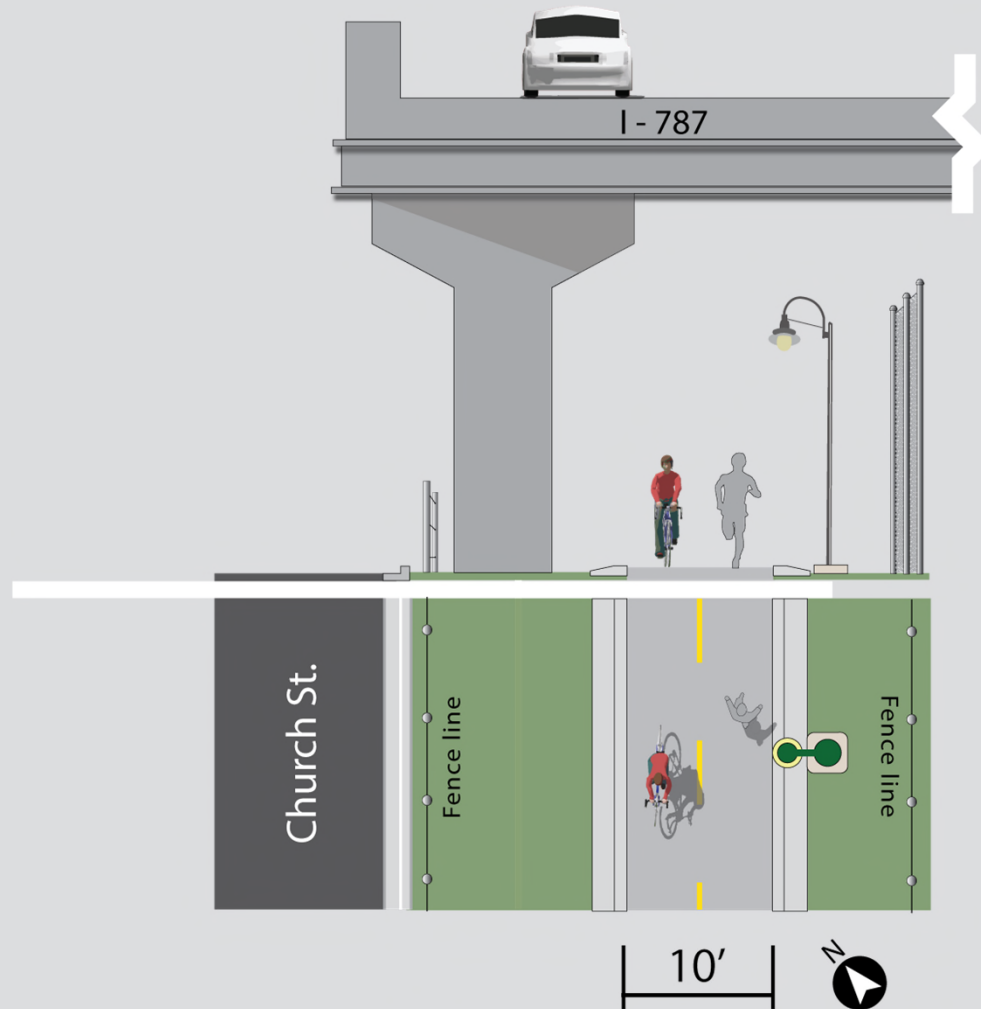
Section 3 – Church St to Quay St



Section 3 – Existing Conditions



Section 3 – Below I-787



10' shared use path - Below I-787

Section 3 – Existing Conditions



Section 3 – Church Street (One Way)



Section 3 – Church Street (One Way)



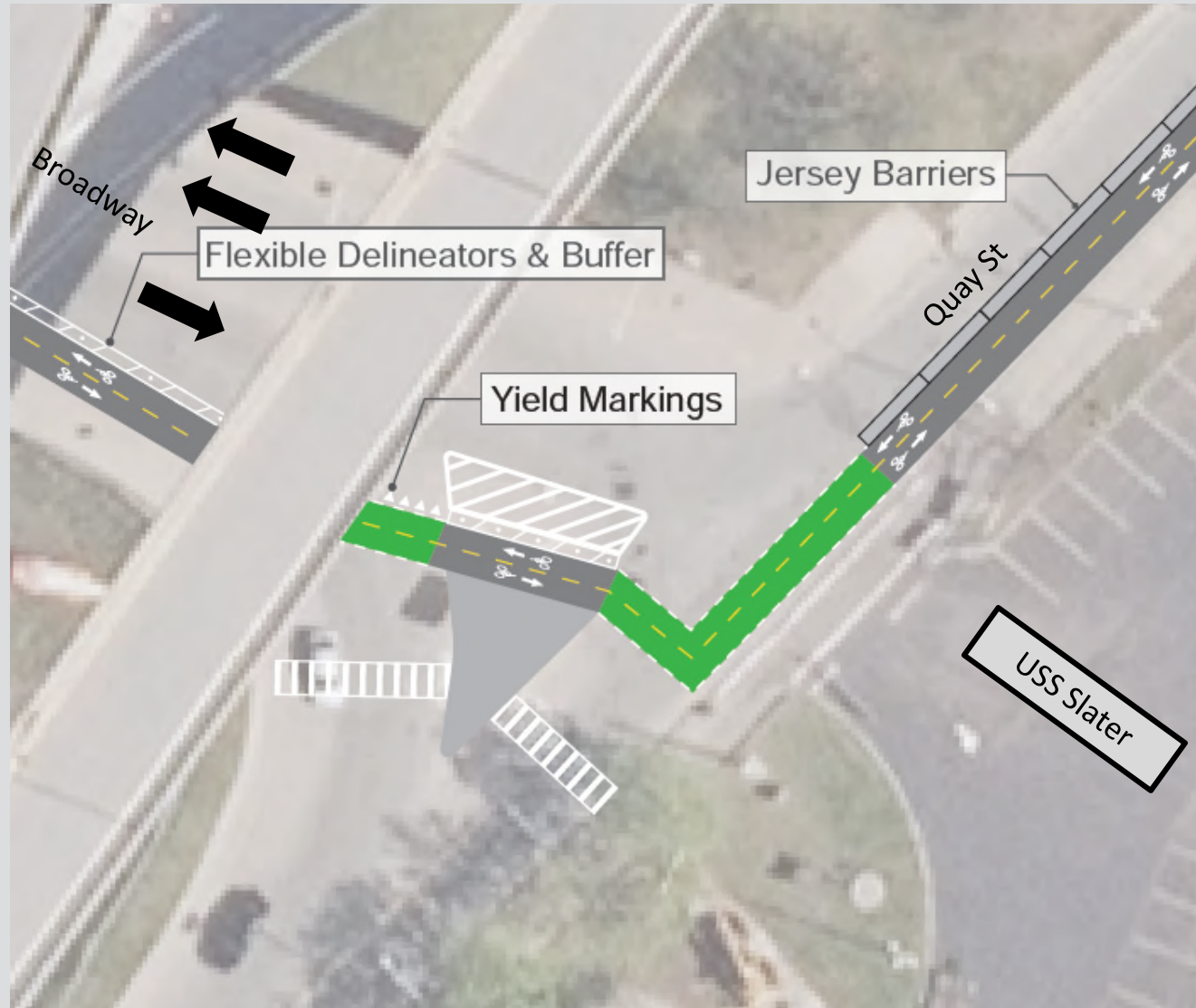
Section 3 – Church St to Quay St



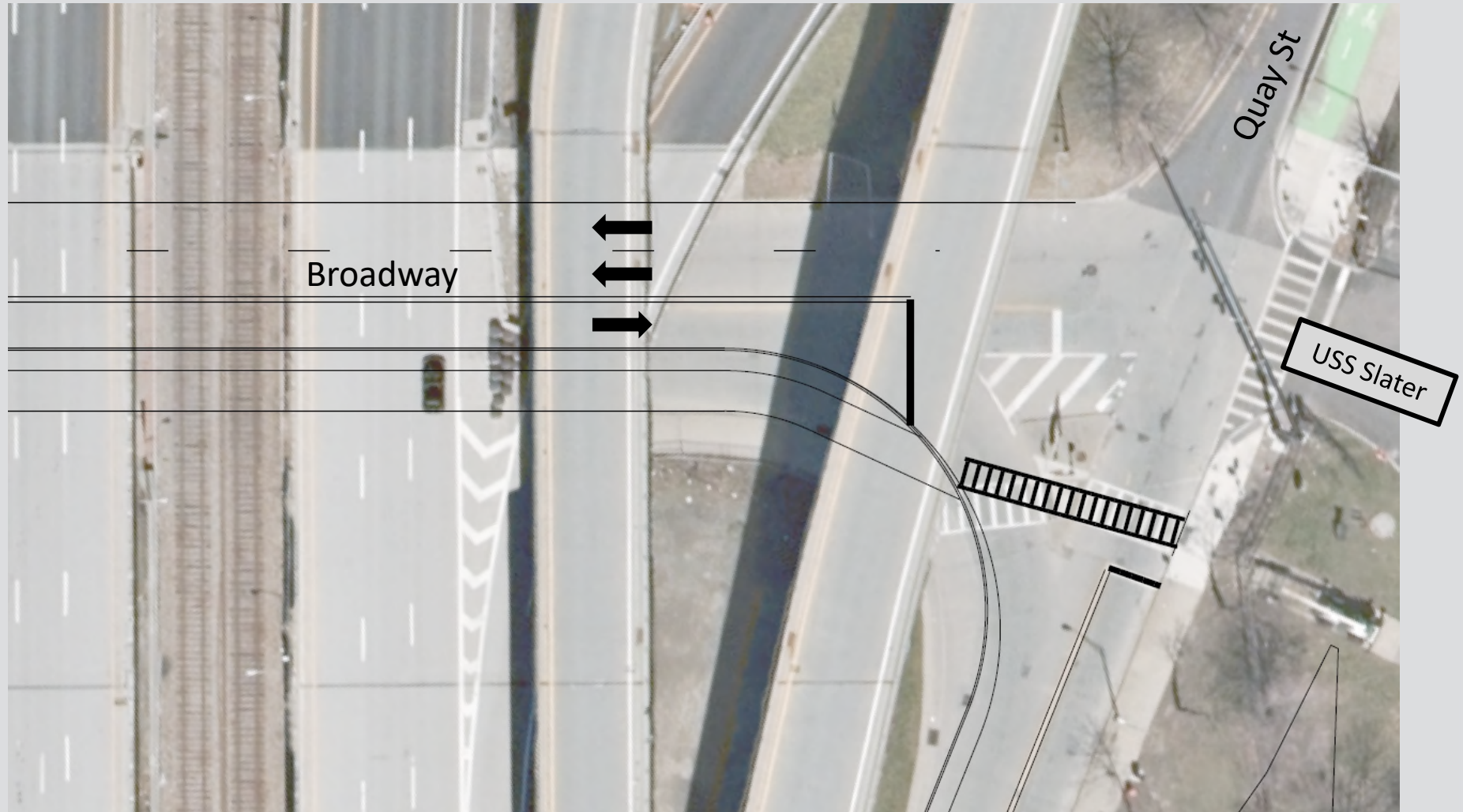
Section 3 – Broadway and Quay Street



Section 3 – Broadway and Quay Street



Section 3 – Broadway and Quay Street



Schedule

Phase	Fall 2018	Winter 2018/2019	Spring 2019	Summer 2019	Fall 2019
Detailed Design					
Construction Begins					
Substantially Complete					

Thank You

Contact Info

Project Contact:

City of Albany Planning Department

(518) 465-6066

Project Website:

<https://albanywaterfrontconnector.weebly.com>

